

One Flat Mirror

(Light bounces off a mirror, so what"?!)



Can you use the mirror to position the Bumble-bee (to the right) and his/her image nose-to-tail? How about feet-to-back? As you can see, some relationships between the animal and its image are possible (what are some examples?) and others are NOT (nose-to-tail for example).

By placing a flat mirror on any imaginary line, you can transform a large (or tiny part) of one of the animals on handout 1701a into something completely different! (This activity was developed by Mr. **Chris Holle** of LAUSD) The possibilities are endless. Feel free to share a few of your findings.

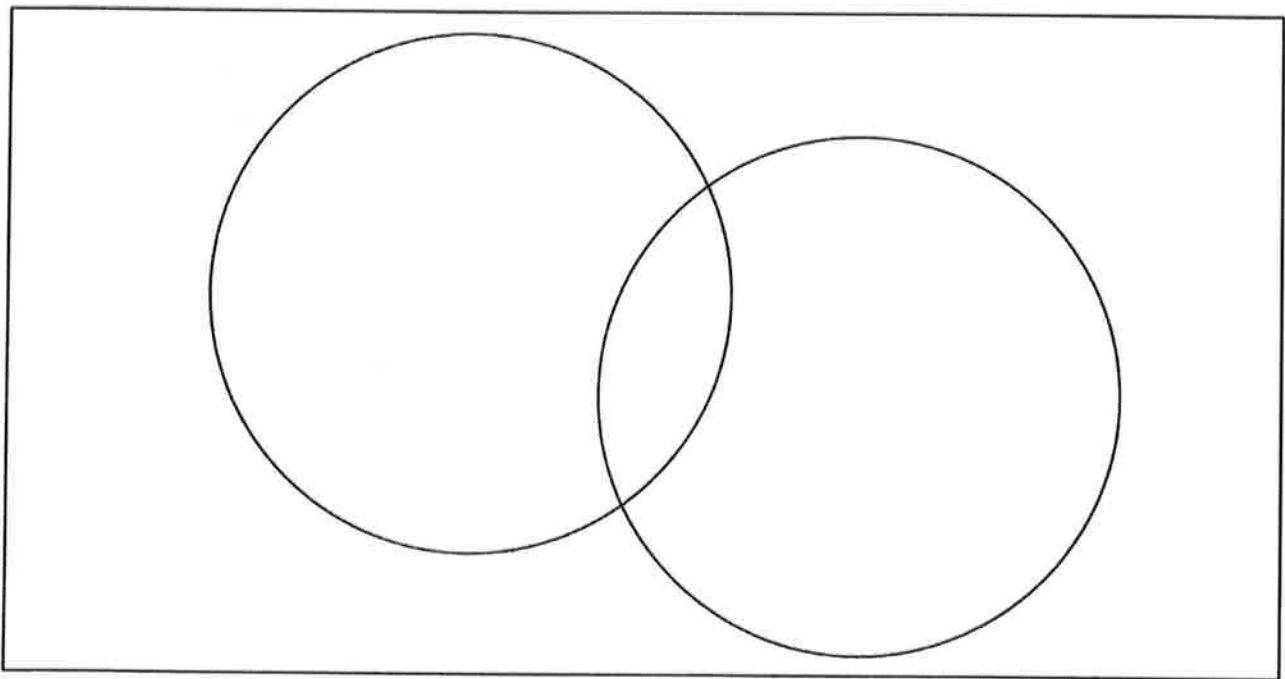
Using the list of capitalized letters (handout 1701b) and a flat mirror, find out why I have them classified into the following groups. (Please remember that we have NO TIME to lose!)

Group 1: A H I M O T U V W X Y

Group 2: B C D E H I K O X

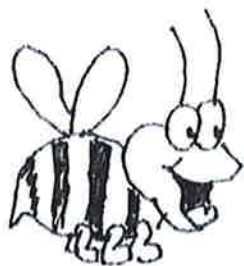
Group 3: F G L J N P Q R S Z

How would you place the letters into the Venn diagram below? Explain why you did it that way.



Are any of the letters in 2 groups? _____

If so, where did you place them? _____



A B C D E F G

H I J K L M N

O P Q R S T U

V W X Y Z