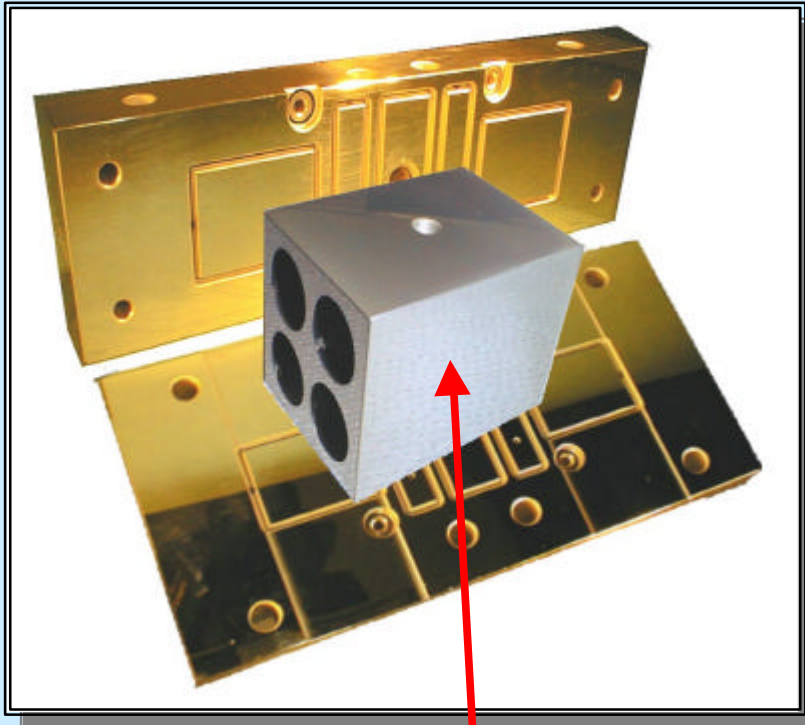


Inertial Sensor Prototype core



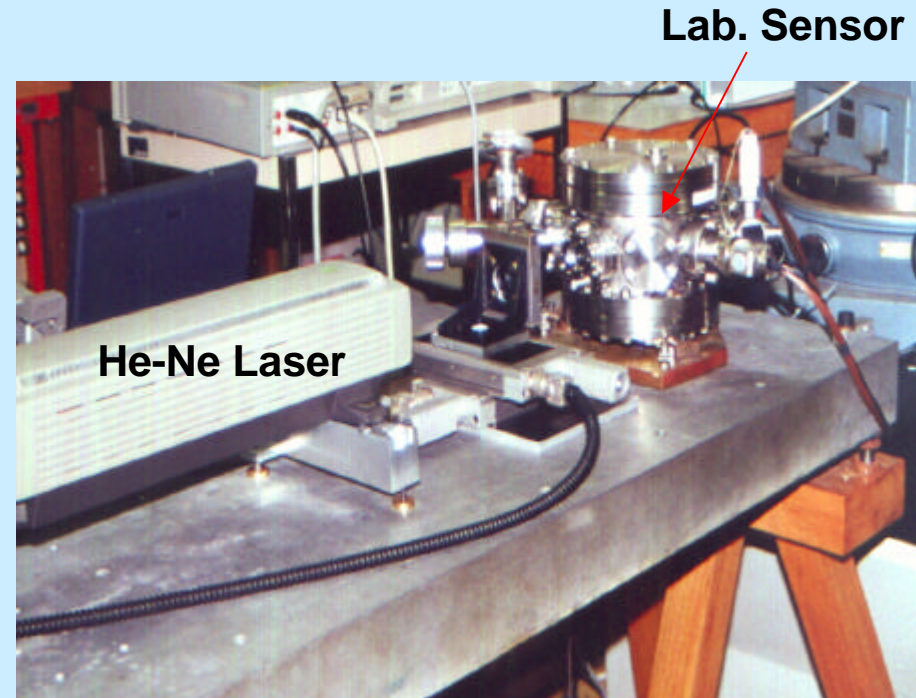
**ULE light PM for
ground suspension**



**Sensor Core ready for
integration in vacuum housing**

Interferometric displacement measurements

- **Interferometric experiments with the proof-mass of the laboratory sensor model used as a mirror (like in LISA)**
- **Proof-mass coating : Chromium (in LISA Gold is envisaged)**
- **Envisaged experiments:**
 - capacitive sensor calibration
 - sensor linearity study
 - axis coupling evaluation
 - sensor characteristics with position or attitude shifts



- **Interferometer : Hewlet Packard with nanometer resolution**
- **Laser : He/Ne Red visible light**
- **beam diameter : 7.4 mm** ONERA

Out of loop measurement of the electrostatic position detector gain : Laser interferometry on proof-mass

