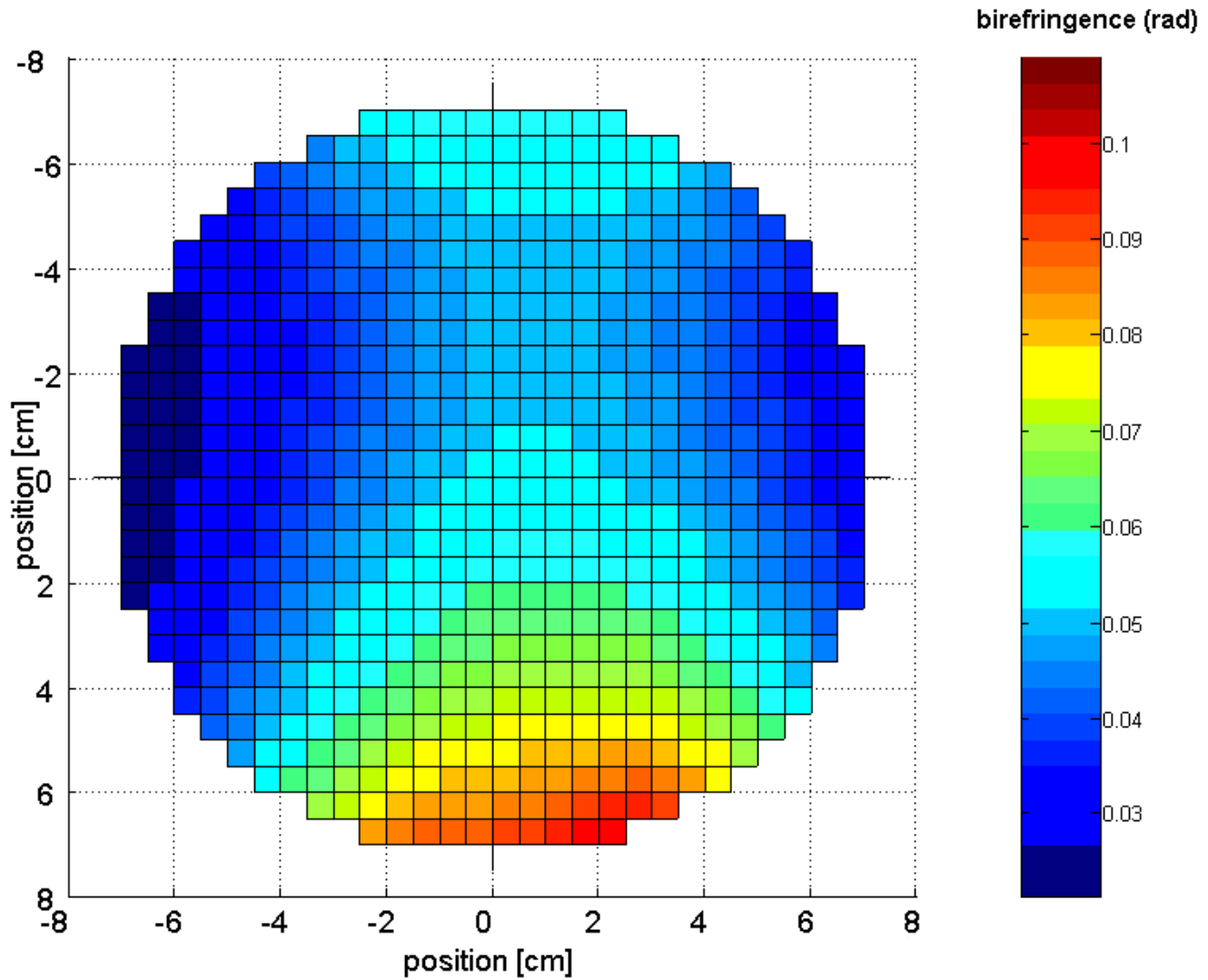
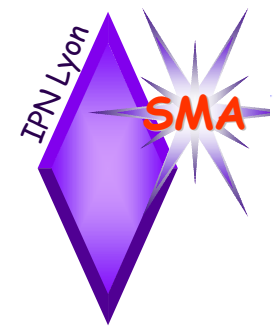
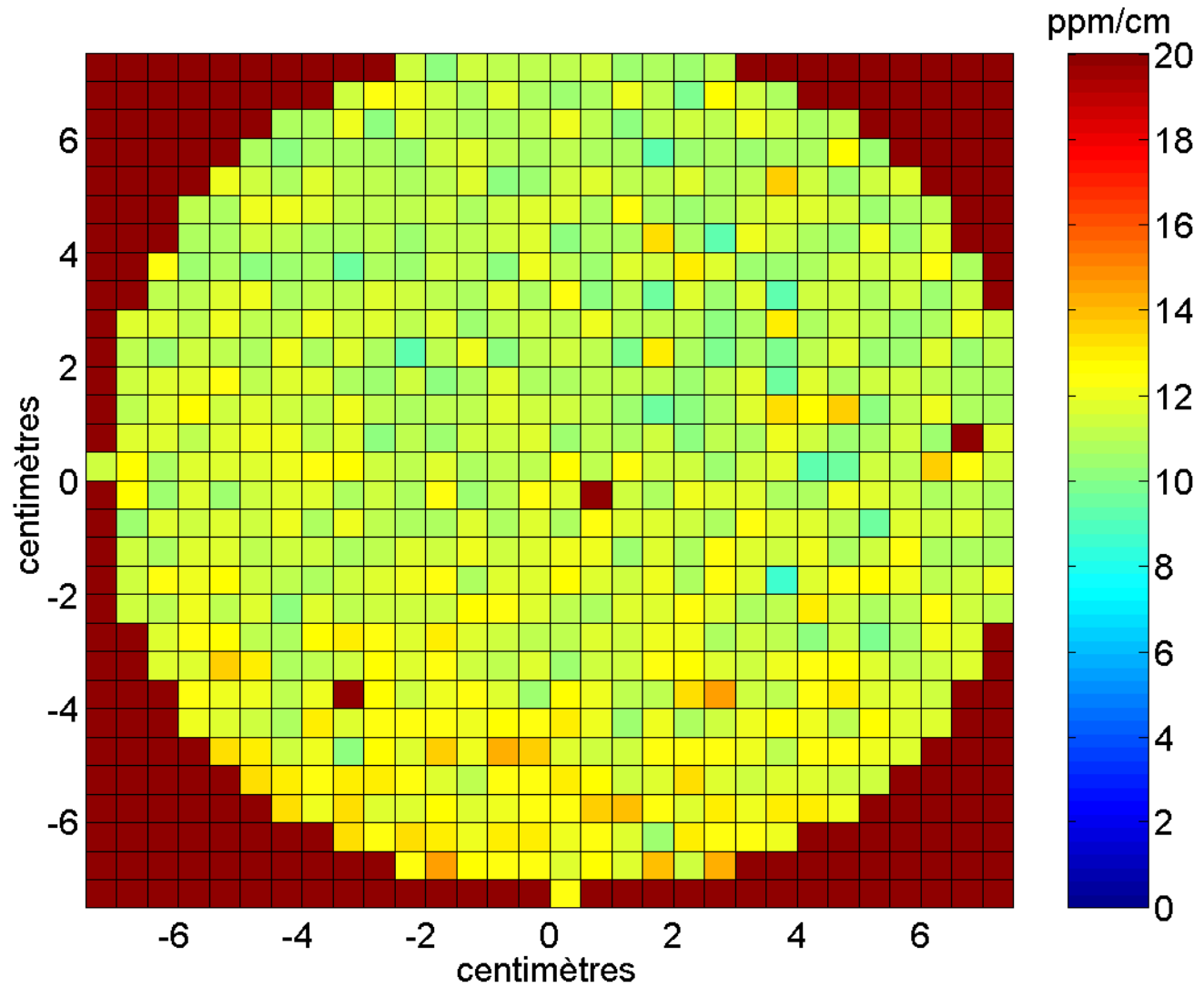
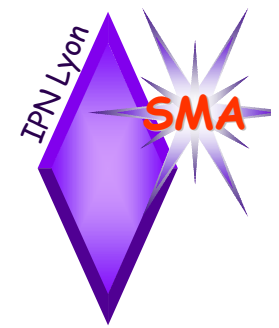


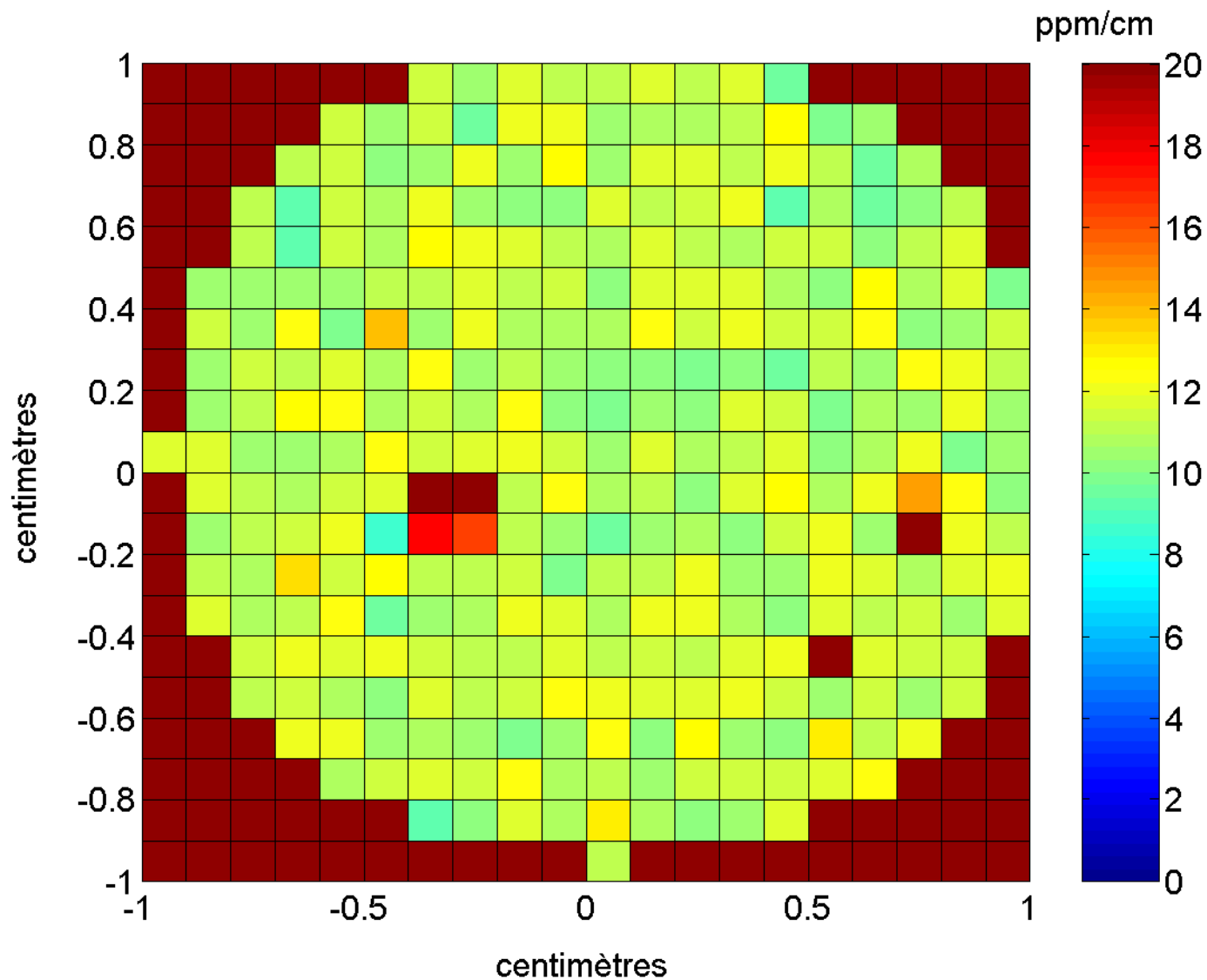
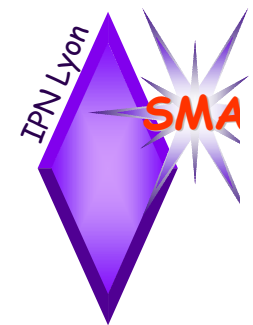
Birefringence map. ϕ 80 mm C01015 SMA mirror



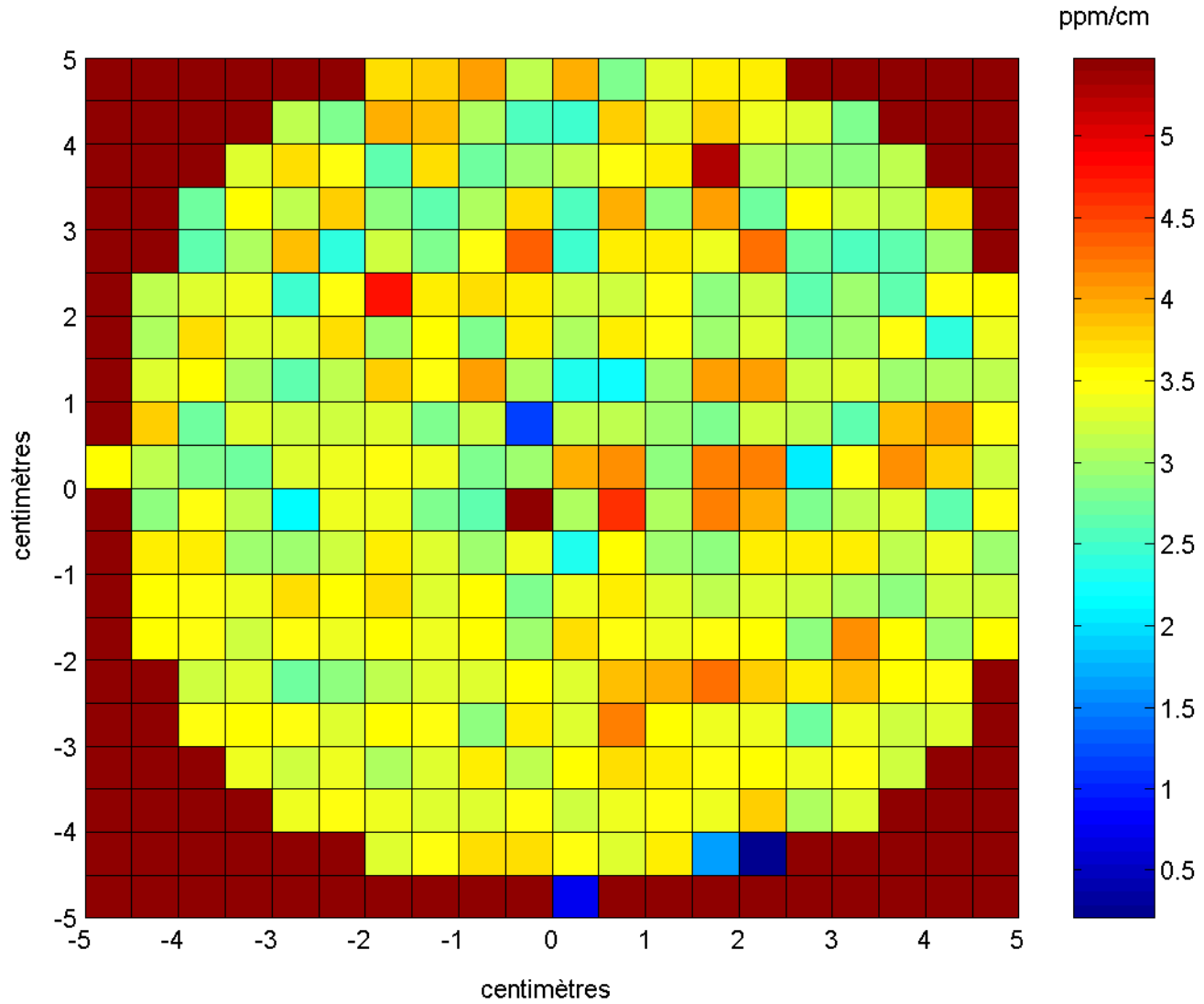
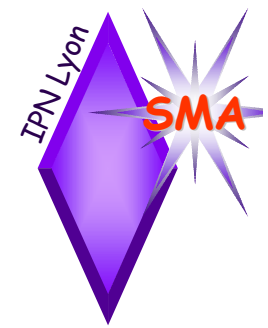
Birefringence map. ϕ 250 mm Ligo substrate



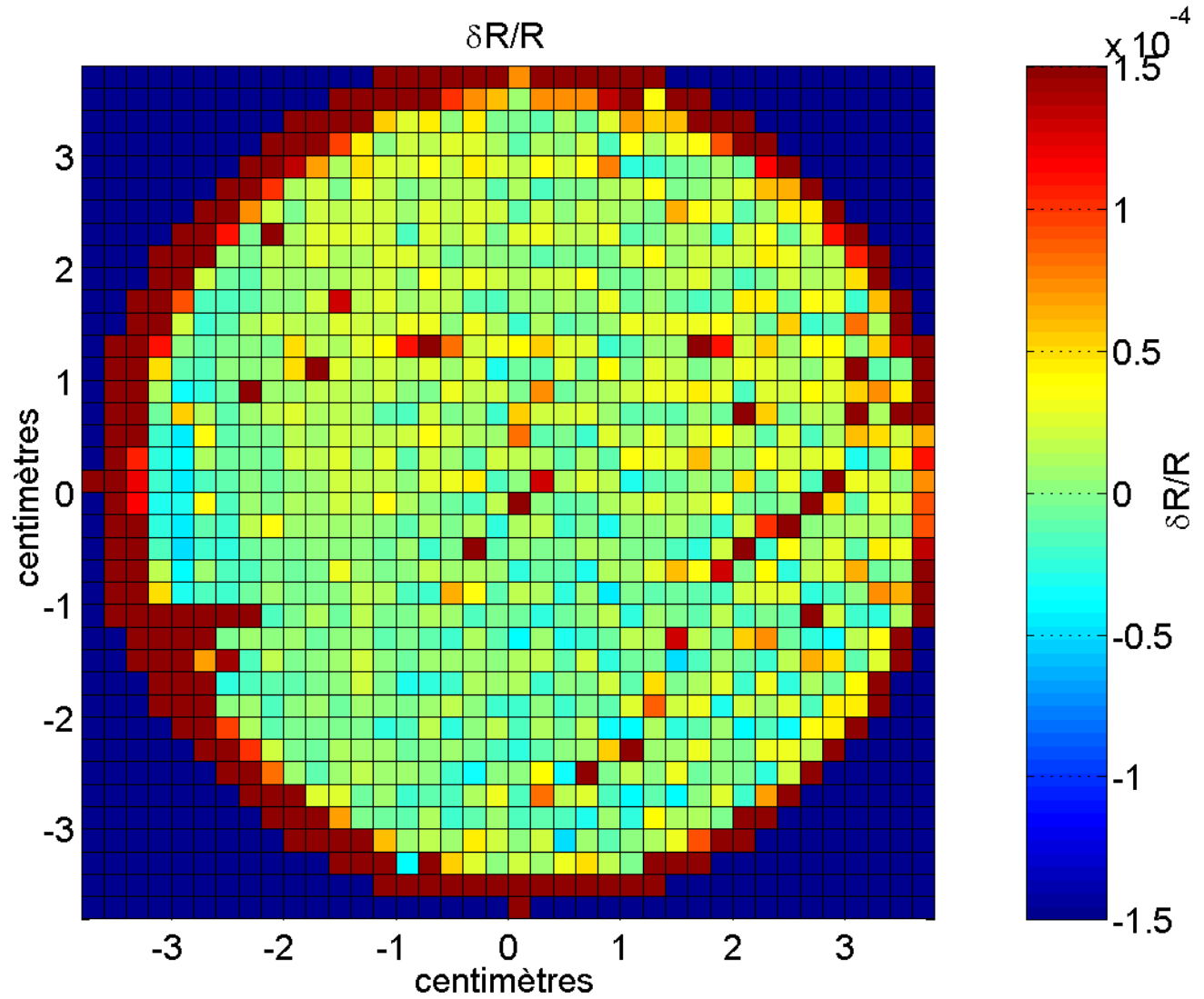
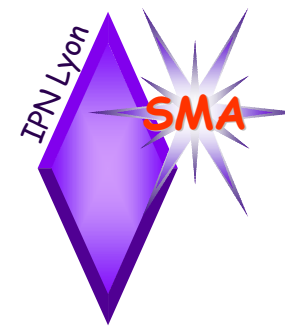
Bulk absorption map. Φ 250 mm Ligo Substrate



Bulk absorption map. Φ 250 mm Ligo Substrate



Bulk absorption map. Φ 300 mm Heraus Substrate



reflectivity uniformity map. ϕ 80 mm C01015 SMA mirror

Micromap 550 SS PHASE
300MMD.D2

SURFACE CONTOUR DISPLAY

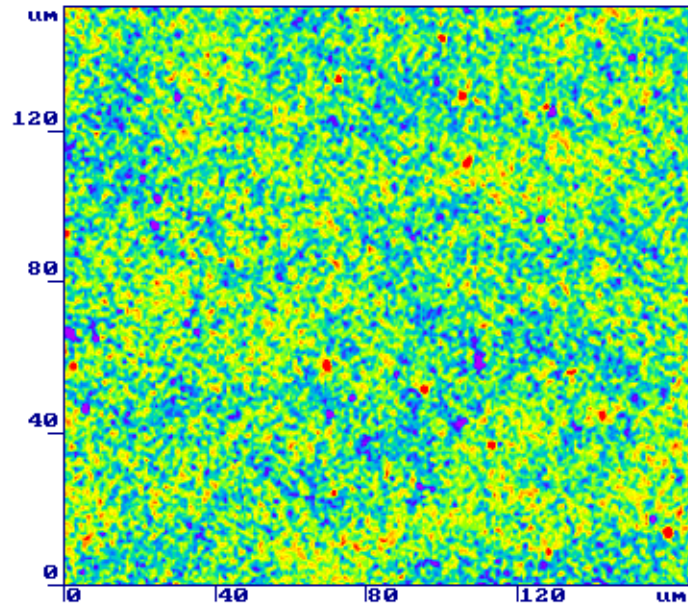
Research 2.4U

256x236 1x1

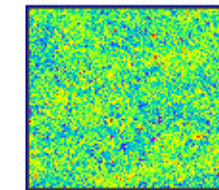
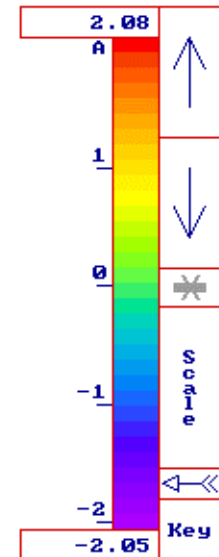
20X 550-4 2/3 in

1X 2001-06-01 17:47

300 nm silica substrate



RMS: 0.69 A Term: QUARTIC
Ra: 0.52 A R1: -49.78 m
P-U: 32.47 A R2: -12.88 m
166 um x 153 um RS: -20.46 m



Zoom: 1.0

Micromap 550 SS PHASE

SURFACE CONTOUR DISPLAY

Research 2.4U

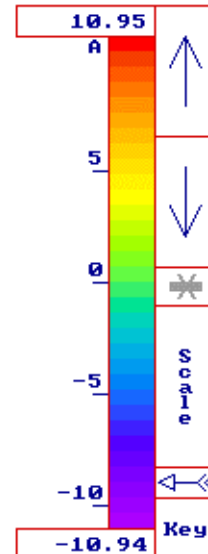
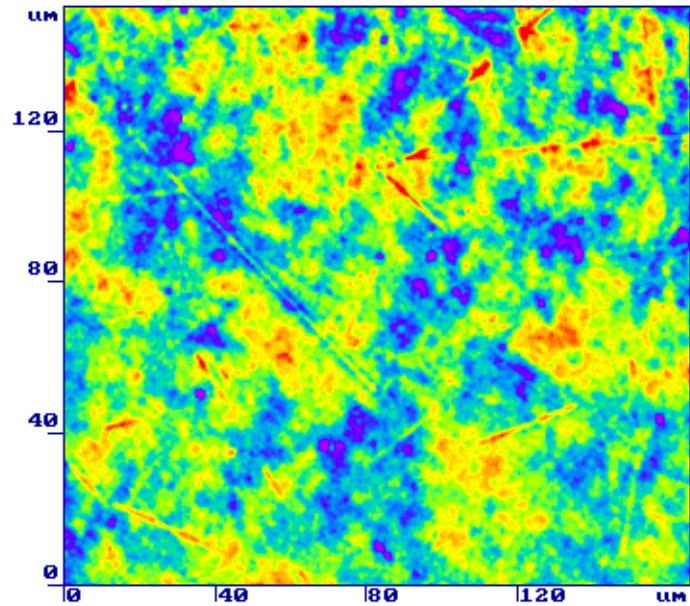
COC01.D2

256x236 1x1

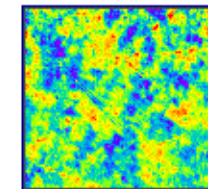
20X 550-4 2/3 in

1X 2001-06-02 11:13

coc 01



RMS: 3.65 A Term: QUARTIC
Ra: 2.86 A R1: 3.299 m
P-U: 58.71 A R2: -1.375 m
166 um x 153 um RS: -4.716 m



Zoom: 1.0

Service des Matériaux Avancés - I.P.N. Lyon - Villeurbanne - France
COC01.10R

Wavelength
= 1.0640 μ m

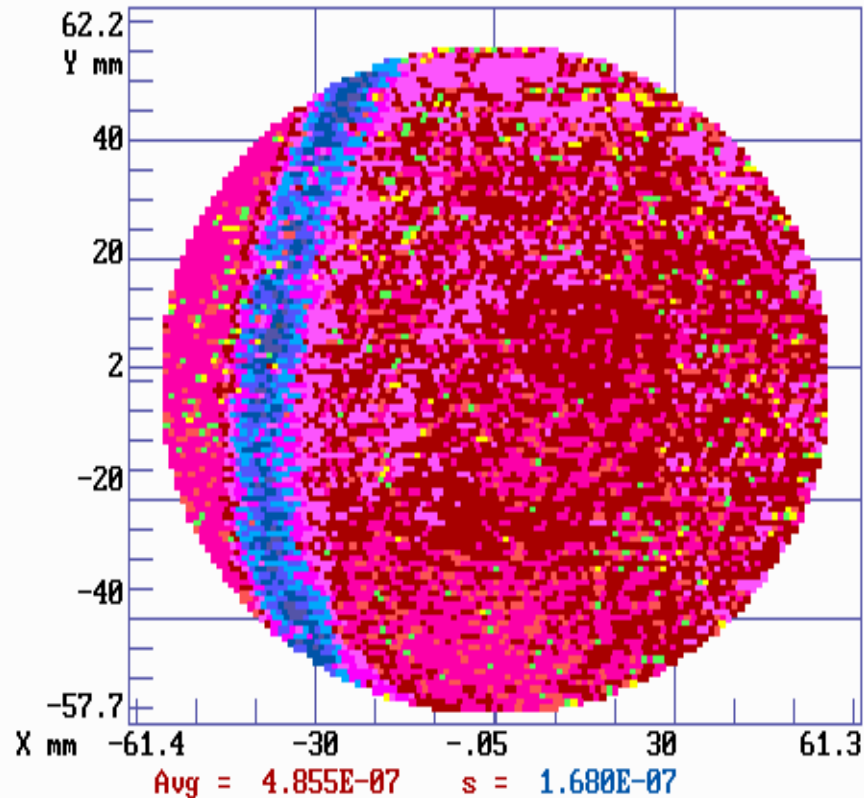
Reflectance
R = 0.0341

Angles:
 $\theta_i = 2.00^\circ$
 $\theta_s = 12.00^\circ$
 $\alpha = 0.00^\circ$

Spot Dia., mm
= 1.000

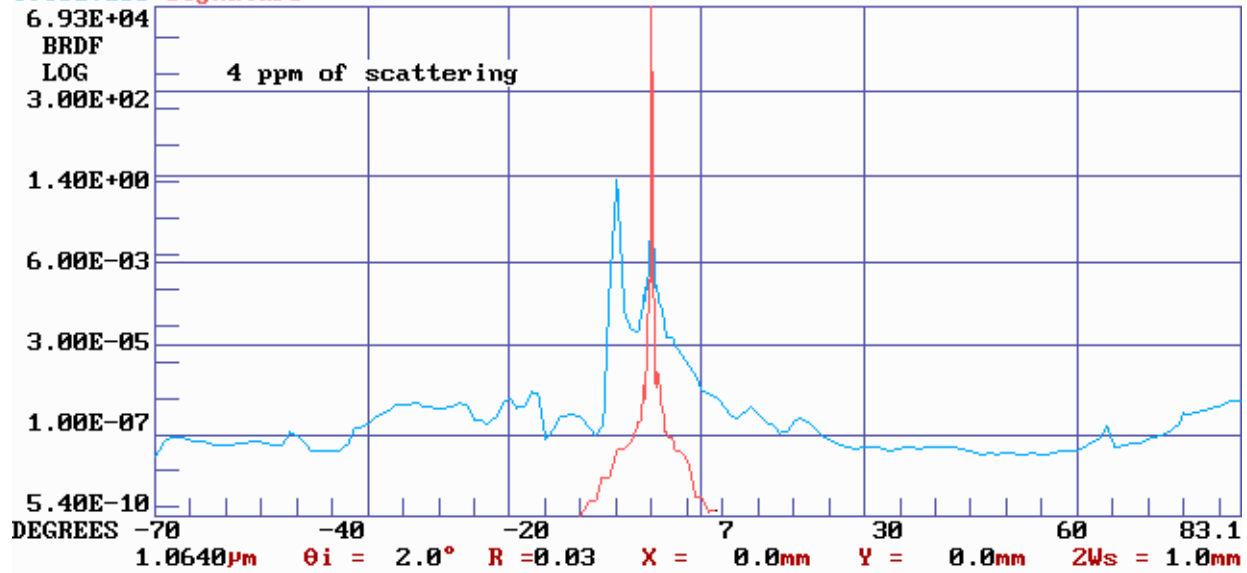
Step Size, mm
= 1.000

Scan Ctr., mm
X = 0.000
Y = 0.000

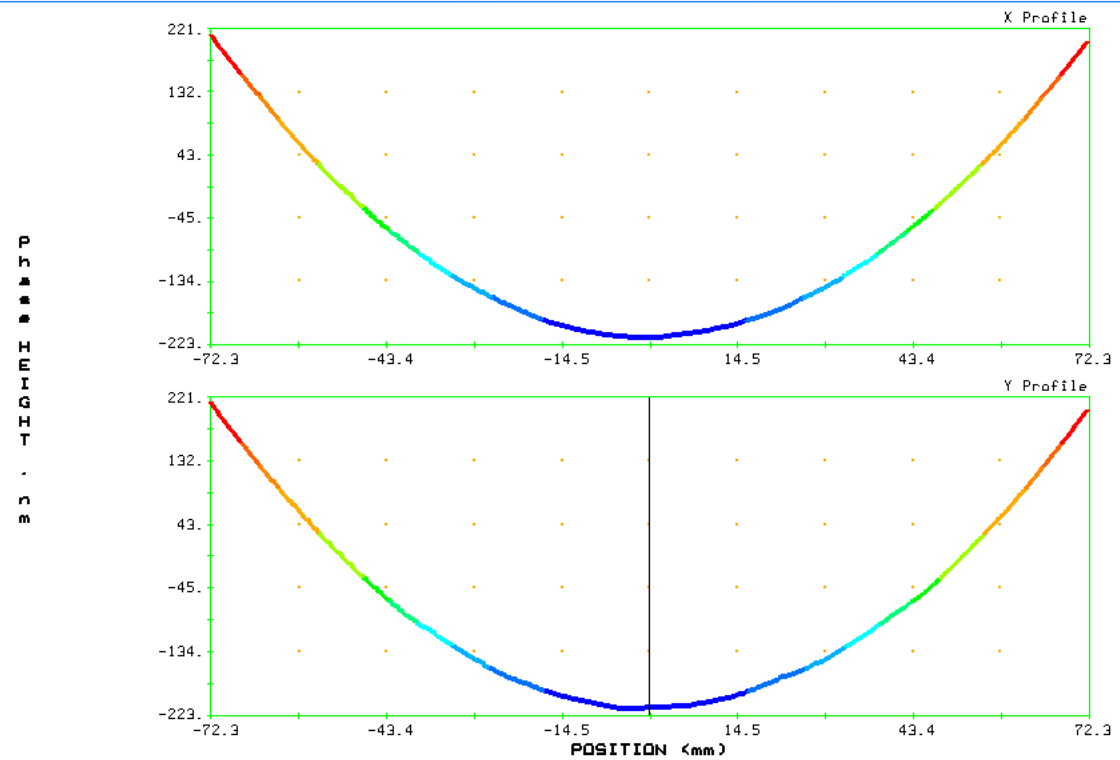


Service des Matériaux Avancés - I.P.N. Lyon - Villeurbanne - France

COC01.106 Signature

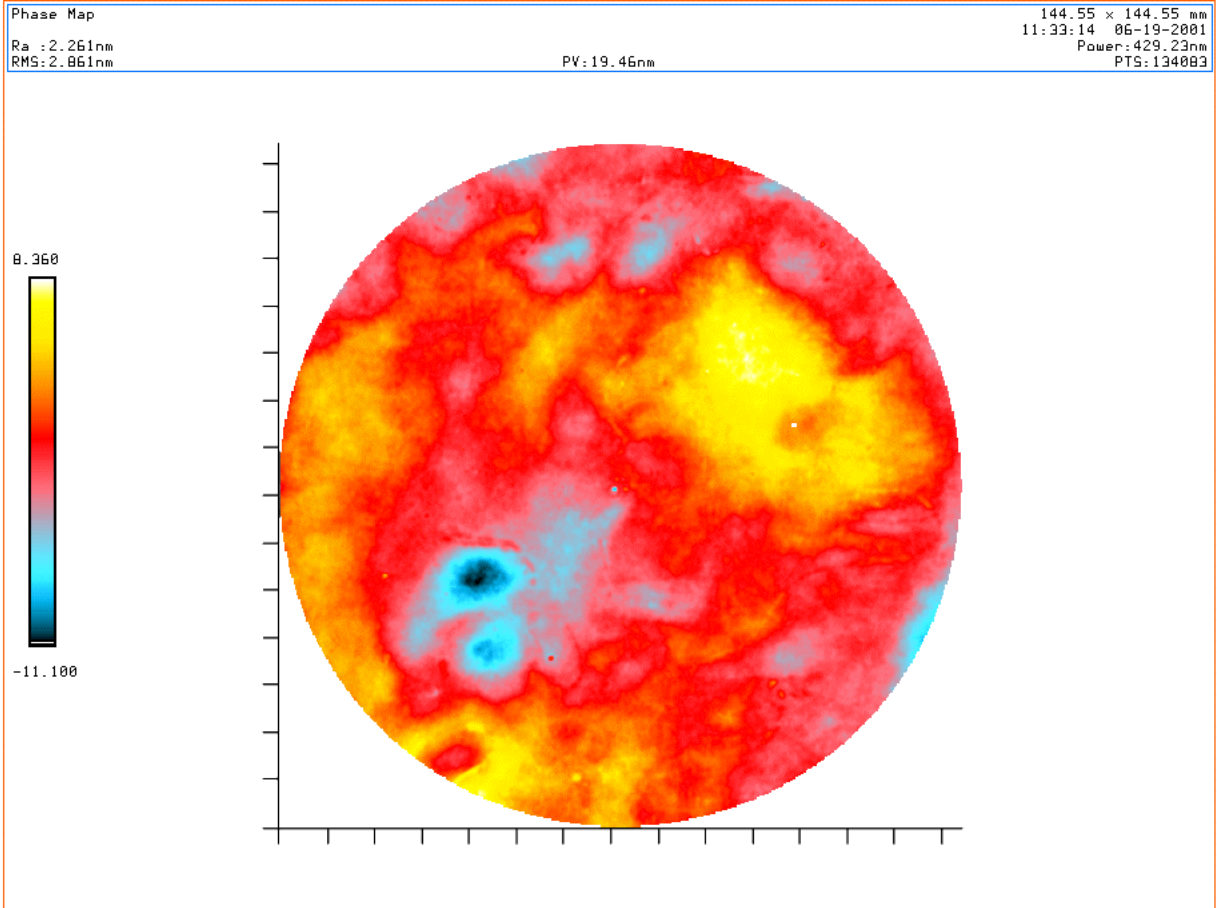


X/Y Profile of coc01-1 day later - new feet	RMS: 123.54nm P-V: 444.64nm Ra: 106.97nm	Area: 144.55x144.55mm 06-19-2001 11:33:14
---	--	---

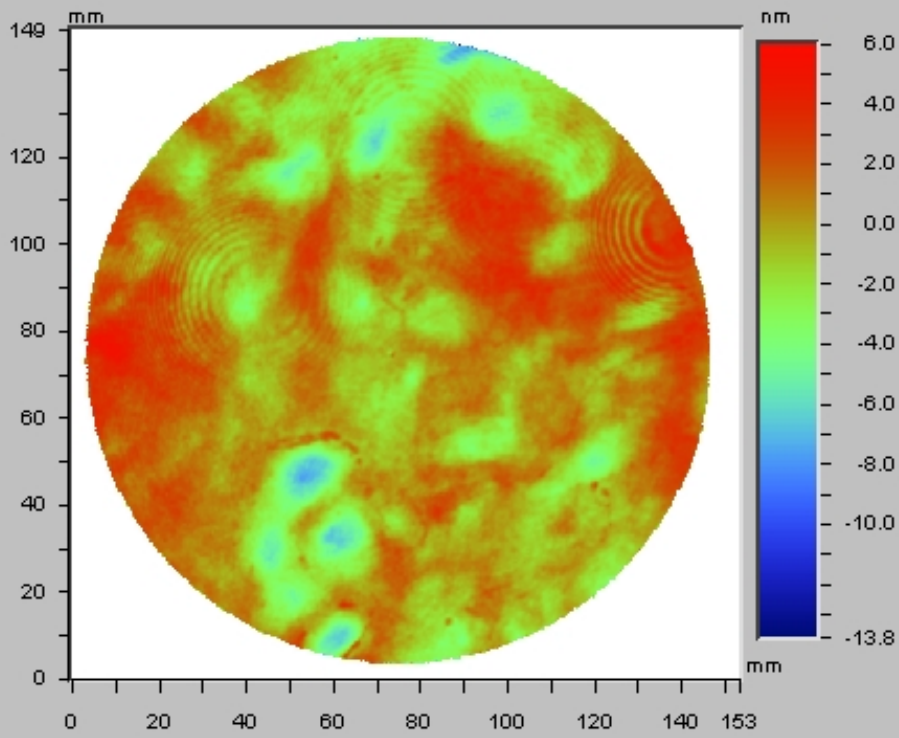


Height	Position	Profile Stats	Tag Stats
Current: -214.457	-8.21	P: 215.20nm V: -215.91nm PV: 431.11nm Pts: 411	Rms: 127.31nm Ra: 109.40nm RQC: 6007.55 m Level: OFF

Title:	SMA-VIRGO	DATE: 06-19-2001 11:33:14
Part ID:	ADE/PHASE SHIFT	Wedge: Surface
Customer: VIRGO	OptiCode - Phase Analysis Software	Polarity: +
Operator: Laurent Pinard	Version 4.23 (c) 1995-2000	
Terms Subtracted: Tilt		



Title:	SMA-VIRGO	DATE: 06-19-2001 11:33:14
Part ID:	ADE/PHASE SHIFT	Wedge: Surface
Customer: VIRGO	OptiCode - Phase Analysis Software	Polarity: +
Operator: Laurent Pinard	Version 4.23 (c) 1995-2000	
Terms Subtracted: Tilt Focus		



Title: Difference **File name:**

Note:

Zernike Coefficients

Zernike_15[01]: 0.014007 wv	Zernike_15[02]: 0.012742 wv
Zernike_15[03]: 0.200935 wv	Zernike_15[04]: 0.002546 wv
Zernike_15[05]: 0.000266 wv	Zernike_15[06]: -0.000893 wv
Zernike_15[07]: -0.000942 wv	Zernike_15[08]: 0.000161 wv
Zernike_15[09]: -0.000163 wv	Zernike_15[10]: 0.000577 wv
Zernike_15[11]: 0.000371 wv	Zernike_15[12]: -0.000336 wv
Zernike_15[13]: 0.000461 wv	Zernike_15[14]: 0.000753 wv
Zernike_15[15]: 0.000343 wv	

Zernike_8[1]: 0.01398 wv
Zernike_8[2]: 0.01272 wv
Zernike_8[3]: 0.20091 wv
Zernike_8[4]: 0.00252 wv
Zernike_8[5]: 0.00025 wv
Zernike_8[6]: -0.00095 wv
Zernike_8[7]: -0.00099 wv
Zernike_8[8]: 0.00013 wv

Date: 07/31/2001 **X Center:** 281.50
Time: 08:56:08 **Y Center:** 241.50
Wavelength: 1.064 um **Radius:** 270.86 pix
Pupil: 100.0 % **Terms:** Tilt Power
PV: 19.8081 nm **Filters:** None
RMS: 1.9495 nm **Masks:**
Rad of curv: 6.109 km **Ref Sub:**

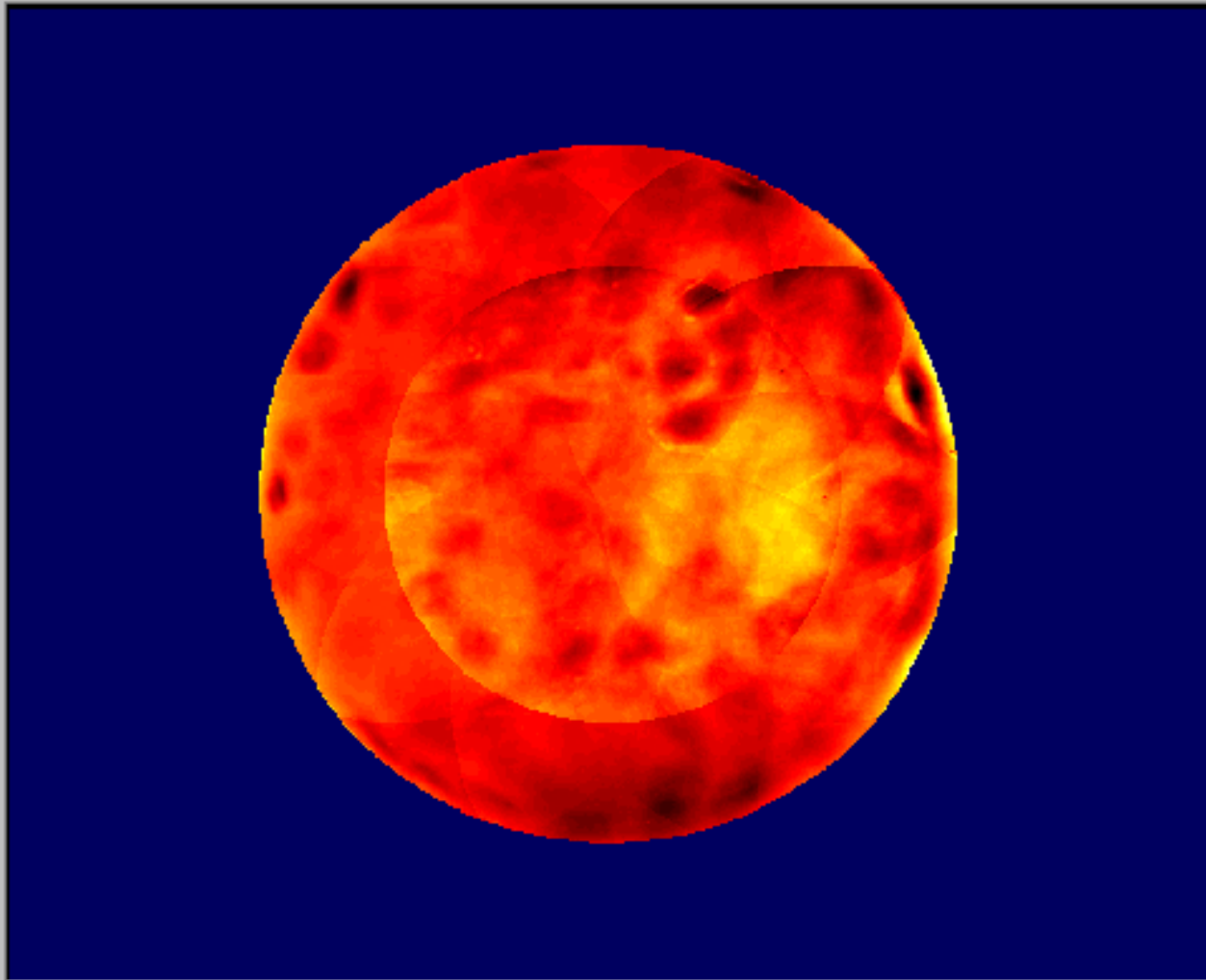
Averages:

Seidel Aberrations (8 Term Fit)

	Coeff (per radius)	Rms	Angle
Tilt	0.0216 wv		42.8 deg
Power	0.4018 wv	0.116 wv	
Focus	0.3985 wv		
Astig	0.0051 wv	0.001 wv	2.9 deg
Coma	0.0041 wv	0.001 wv	-133.9 deg
Sa3	0.0008 wv	0.000 wv	

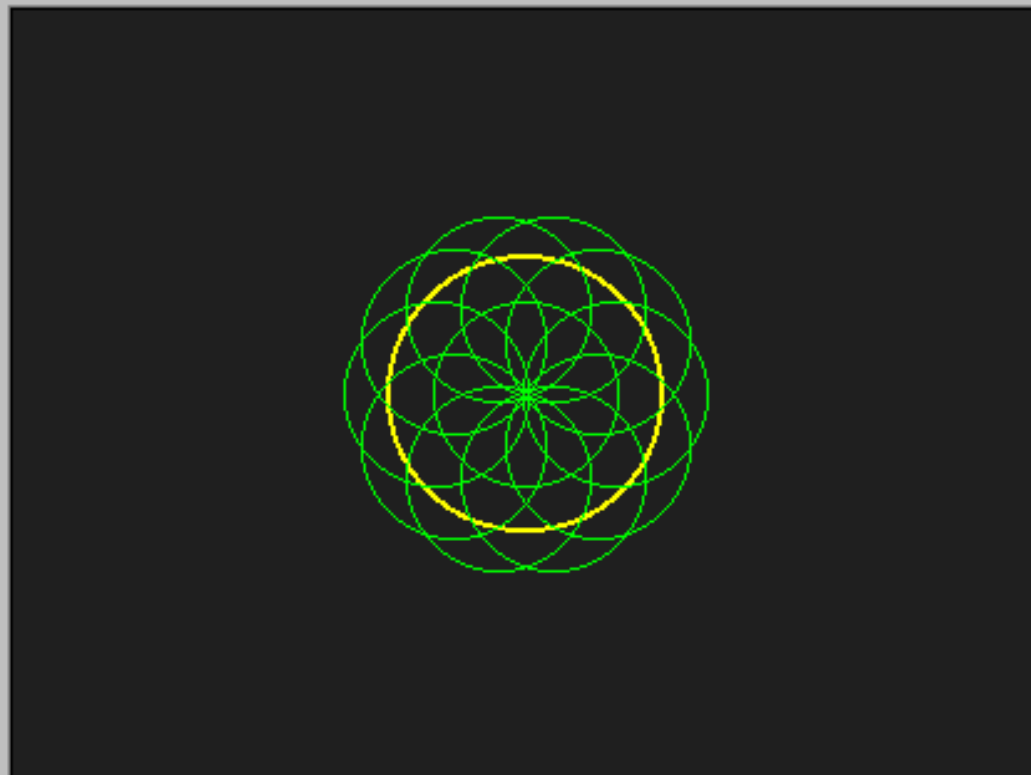
PV = 11.448 nm

RMS = 1.043 nm



Max : 7.112 nm

Min : -4.336 nm



(Dimensions en millimètres)

	X	Y	Angle	Forme
Dimensions Composant :	<input type="text" value="215.0"/>	<input type="text" value="215.0"/>	<input type="text" value="0.0"/>	<input type="text" value="Cercle"/>
Dimensions Mesurées :	<input type="text" value="215.0"/>	<input type="text" value="215.0"/>	<input type="text" value="0.0"/>	<input type="text" value="Cercle"/>
Dimensions Utiles :	<input type="text" value="215.0"/>	<input type="text" value="215.0"/>	<input type="text" value="0.0"/>	<input type="text" value="Cercle"/>
Taux de Recouvrement :	<input type="text" value="52 %"/>	<input type="text" value="45 %"/>	<input type="text" value="X"/>	<input type="text" value="RAD"/>
Nombre de Mesures :	<input type="text" value="1"/>	<input type="text" value="10"/>	Total :	<input type="text" value="11"/>
Pupille Interféromètre :	<input type="text" value="144.5"/>	<input type="text" value="144.5"/>	<input type="text" value="0.0"/>	<input type="text" value="Cercle"/>

