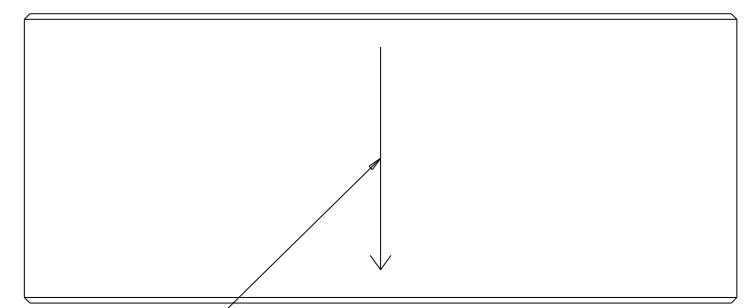
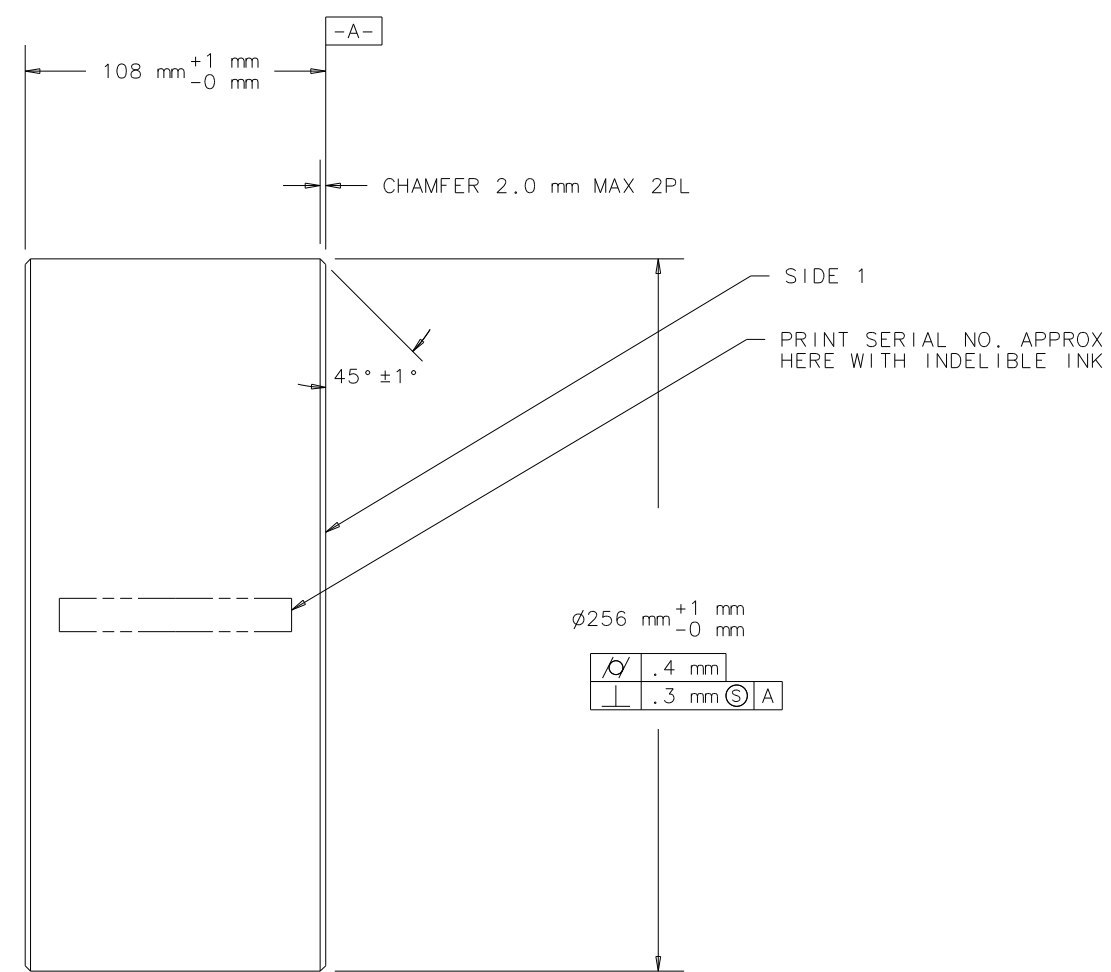
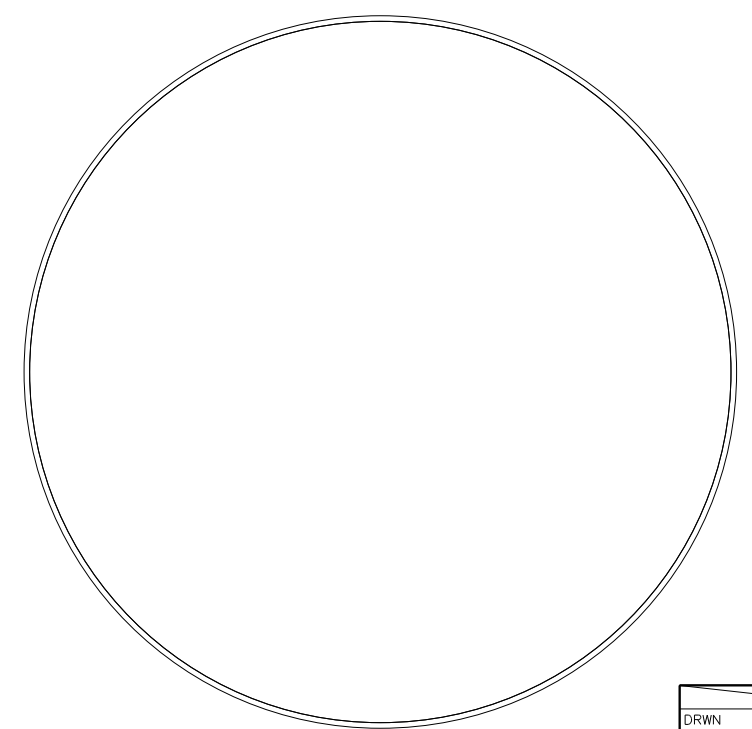


NOTES: (UNLESS OTHERWISE SPECIFIED)
 1. DRAWING TO BE INTERPRETED PER
 ANSI Y14.5M-1994.

REV	SHEETS	DATE	DRWN	DCC	DCN/DESCRIPTION
00	-	-	-	-	-
A	-	06-20-96	C CONLEY		E960103-00-D/INITIAL RELEASE



MARK "TOP" OF OPTIC (CORRESPONDING
 TO "TOP" ON PHASE MAPS) WITH
 INDELIBLE INK LINE 80 mm LONG
 PERPENDICULAR TO -A- WITHIN 1 mm,
 ARROW POINTS TO SIDE 1



DRWN	C CONLEY	DATE	6-6-96	CALIFORNIA INSTITUTE OF TECHNOLOGY MASSACHUSETTS INSTITUTE OF TECHNOLOGY		LIGO PROJECT		
CHKD				CAD FILE: /home/conley/opticshw/blank_core_optic.asc				
ENGR				CORE OPTIC BLANK				
APPD								
MATERIAL: FUSED SILICA PER RELEVANT SPECIFICATION				SCALE: NTS	SIZE	DRAWING NUMBER	SHEET	REV
DO NOT SCALE DRAWING					D	D960794-A-D	1	of 1