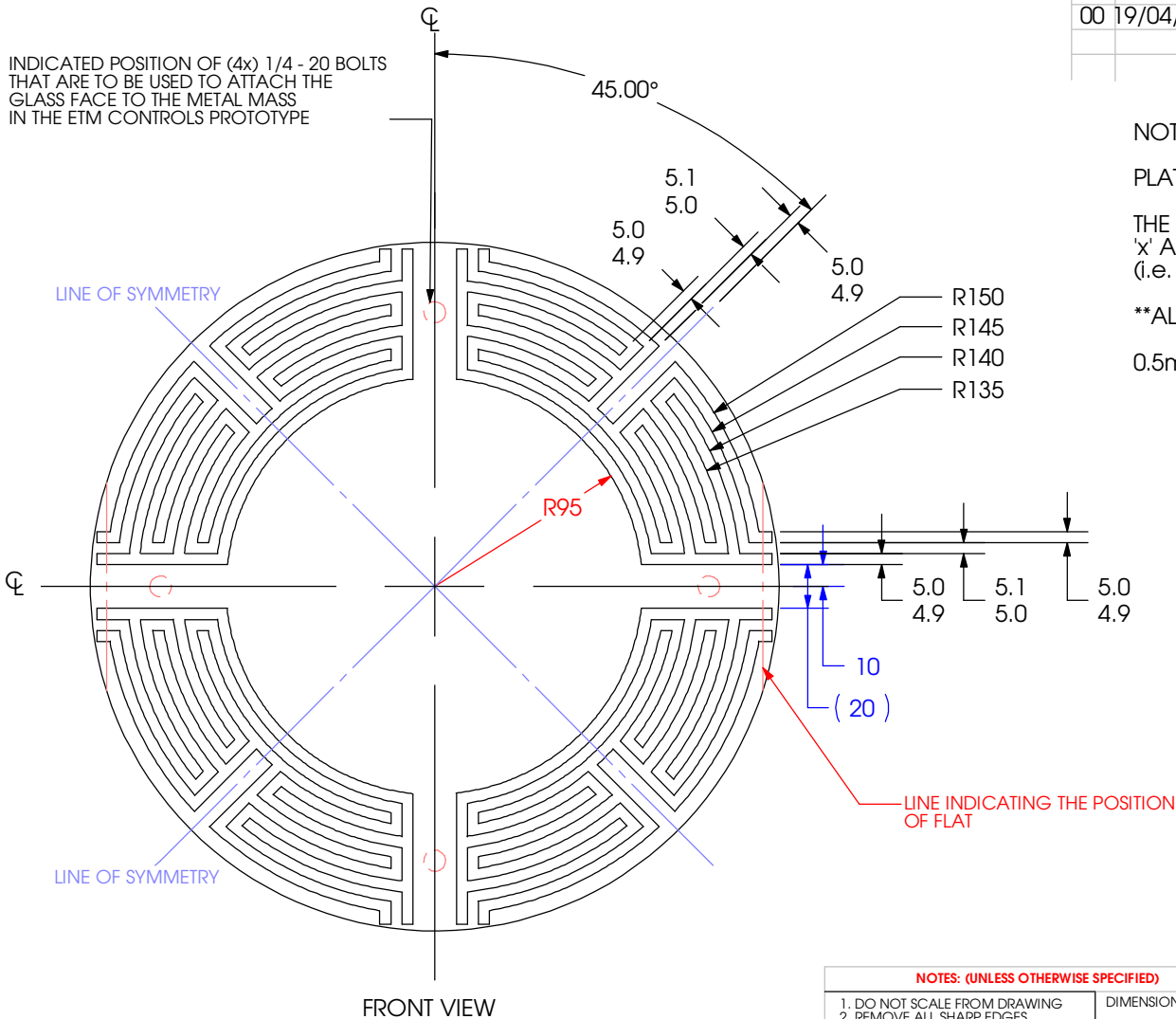


INDICATED POSITION OF (4x) 1/4 - 20 BOLTS THAT ARE TO BE USED TO ATTACH THE GLASS FACE TO THE METAL MASS IN THE ETM CONTROLS PROTOTYPE



FRONT VIEW

REV.	DATE	DCN #	DRAWING TREE #
00	19/04/04	FIRST RELEASE FOR DISCUSSION AT WEEKLY SUS MEETING (20/04/04)	

NOTES:

PLATE THICKNESS: 1mm (AS IN GEO600)

THE SLOT PATTERN IS MIRRORED IN BOTH 'x' AND THE 'y' AXES.
(i.e. SYMMETRIC ABOUT BOTH CENTRELINES)

**ALL SLOTS ARE 5mm WIDE.

0.5mm RADIUS REQUIRED AT ALL CORNERS OF SLOTS.



ISOMETRIC VIEW

NOTES: (UNLESS OTHERWISE SPECIFIED)

- DO NOT SCALE FROM DRAWING
- REMOVE ALL SHARP EDGES, R0.2 MAX.
- DO NOT SCALE FROM DRAWING.
- ALL MACHINING FLUIDS SHALL BE WATER SOLUBLE AND FREE OF SULFUR, CHLORINE AND SILICONE, SUCH AS CINCINNATI MILACRON'S CIMTECH 410 (STAINLESS STEEL)

DIMENSIONS ARE IN MILLIMETERS

TOLERANCES:

GENERAL: ±0.1

ANGULAR: ± 0.1 °

MATERIAL
316 Stainless Steel

FINISH
0.4 μm

	NAME	DATE
DRAWN	RAJ	19/04/04
CHECKED		
APPROVED		

CALIFORNIA INSTITUTE OF TECHNOLOGY
LIGO MASSACHUSETTS INSTITUTE OF TECHNOLOGY
IGR, GLASGOW UNIVERSITY GEO 600 GROUP

SYSTEM
ADVANCED LIGO

SUB-SYSTEM
SUS

NEXT ASSY

PART NAME
Electrostatic Drive Evaporation Mask

SIZE DWG. NO.
A D040146

REV.
00

SCALE: 1:4 PROJECTION: SHEET 1 OF 1