

Non-stationarity of E7 Data

David Chin (U. Mich.)

dwchin@umich.edu

Keith Riles (U. Mich.)

kriles@umich.edu

PULG

G020344-00-Z

2002-08-19

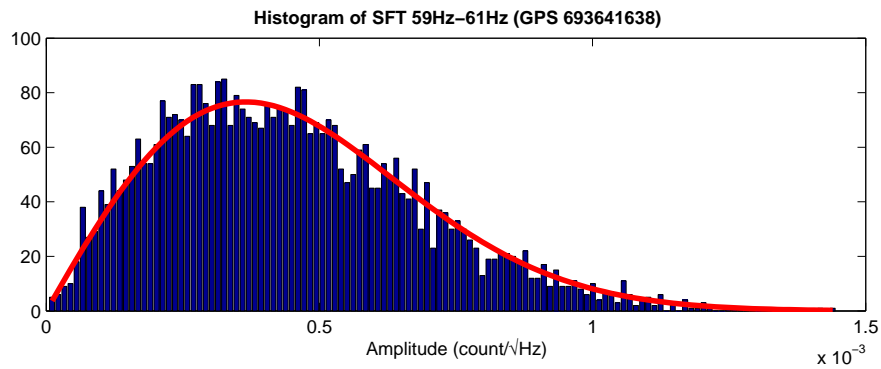
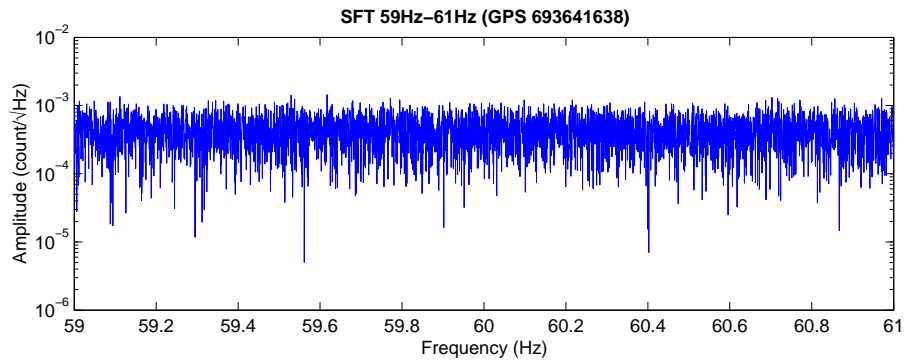
Abstract

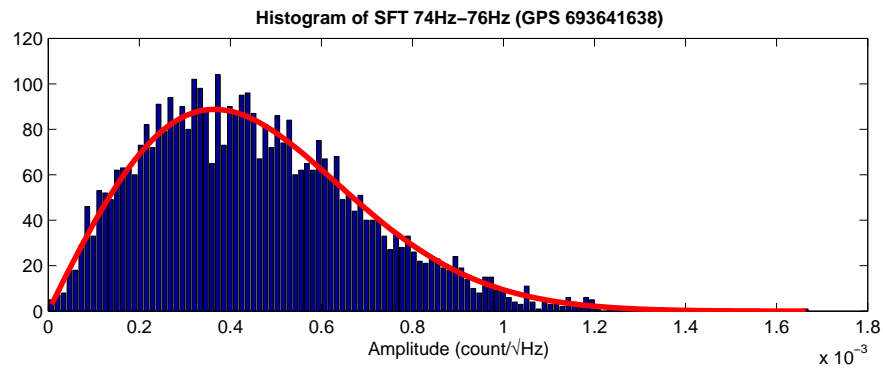
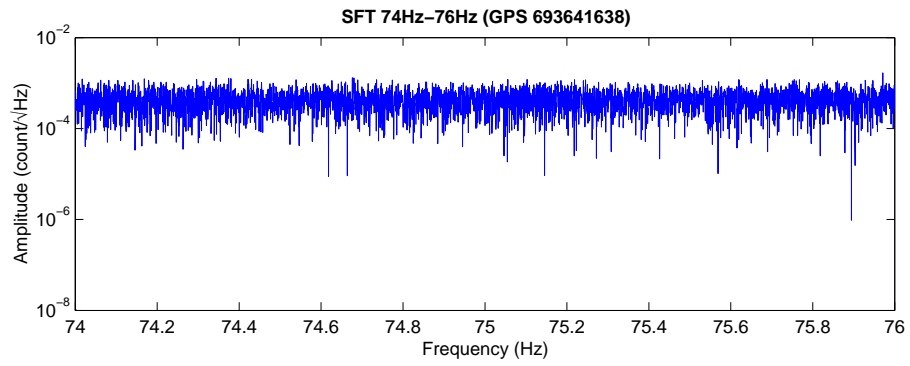
A preliminary look at the Gaussianity of E7 data.

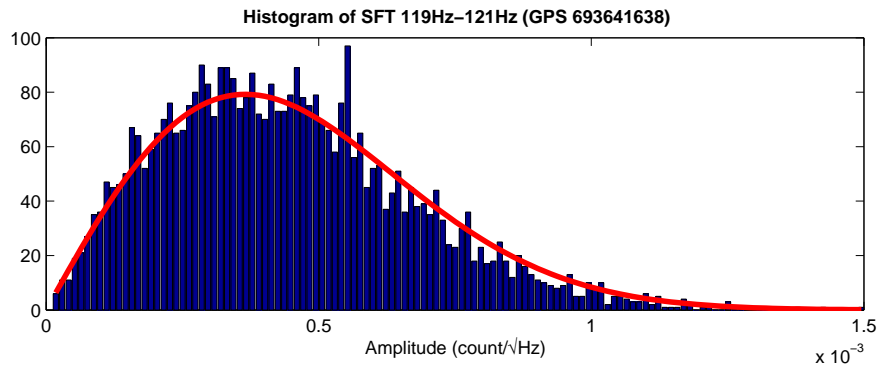
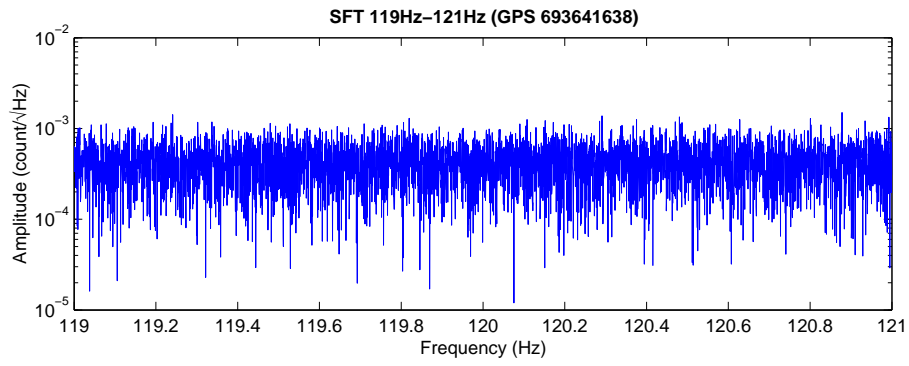
Introduction

Plots were made of three frequency bands: 59Hz-61Hz, 74Hz-76Hz, and 119Hz-121Hz. Frequency resolution is 1/2048 Hz, *i.e.* resolution of SFTs. SFTs are from time-series data that was not padded. Curves drawn are Rayleigh distributions, $\frac{x}{\sigma^2} \exp \frac{-x^2}{2\sigma^2}$. They are **not** fits: the parameter σ was adjusted manually.

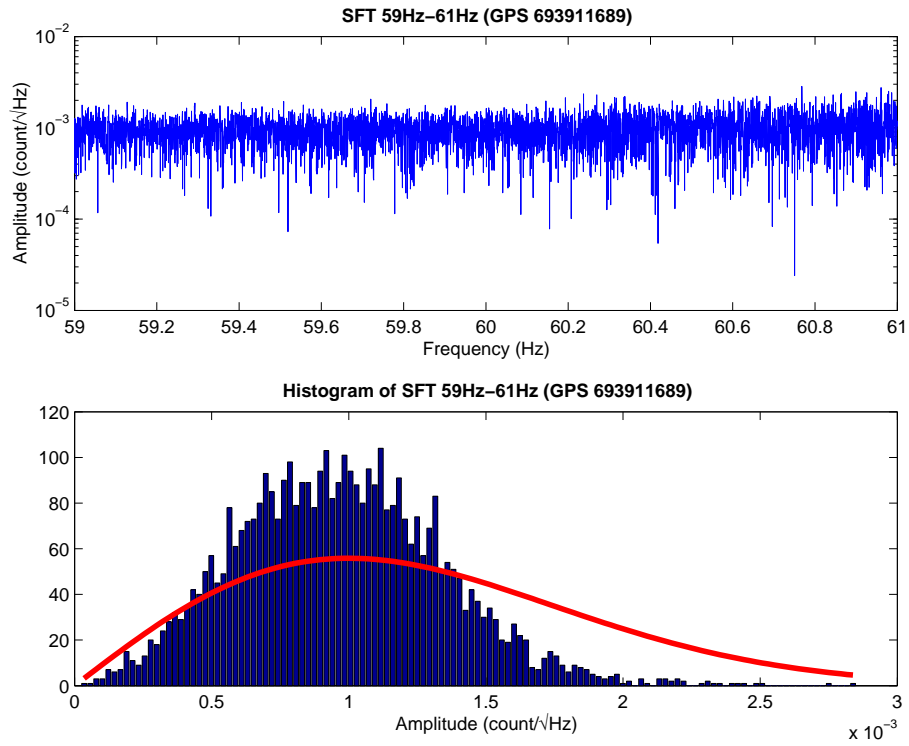
GPS 693641638 (2001 Dec 29 06:13:45 UTC)

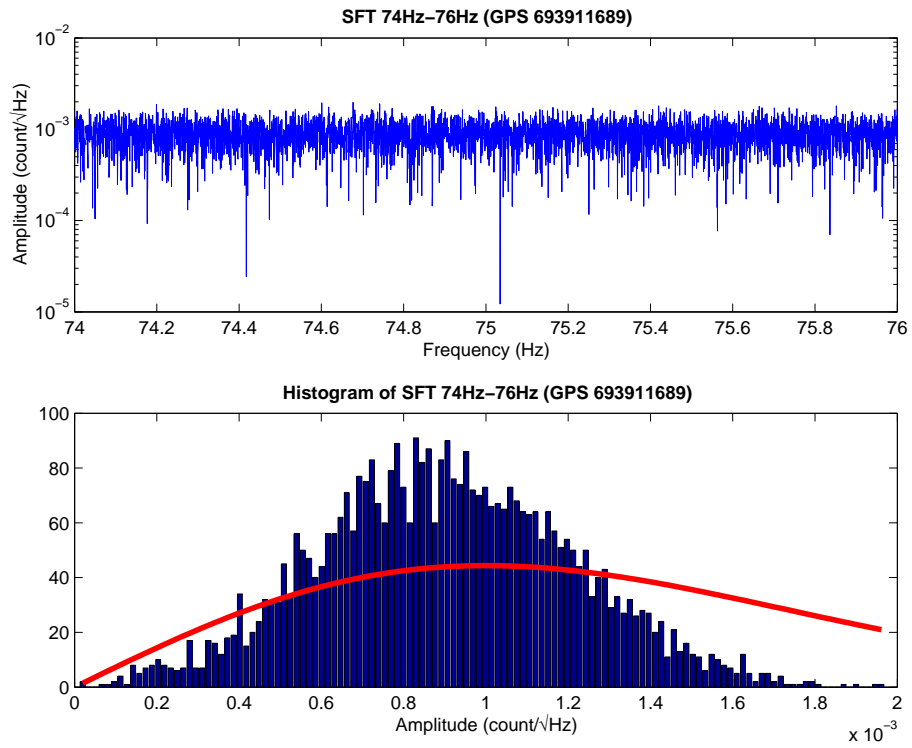


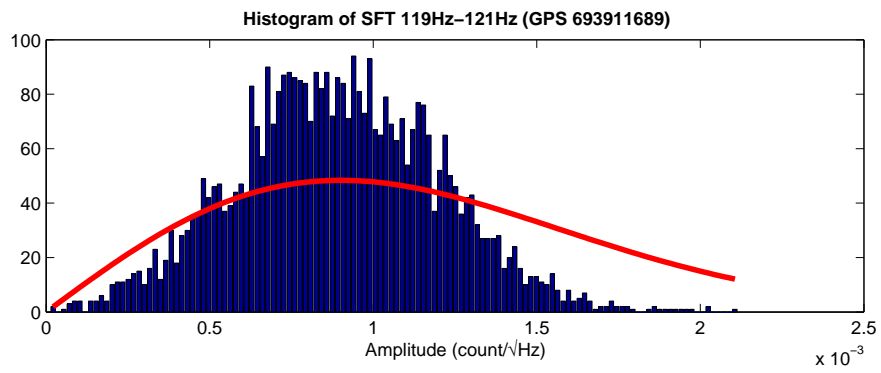
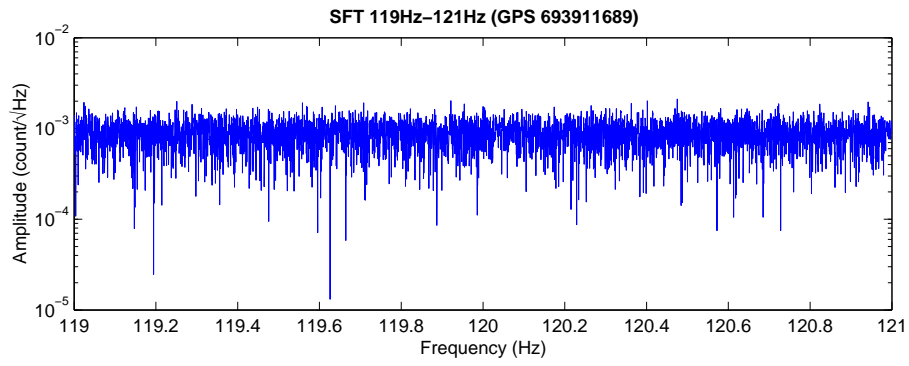




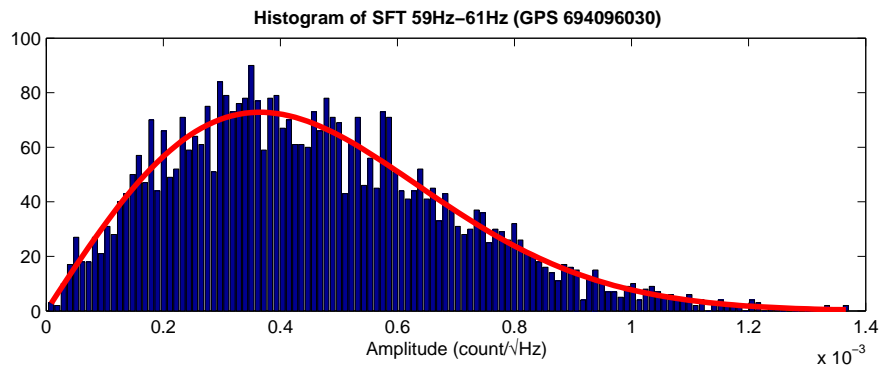
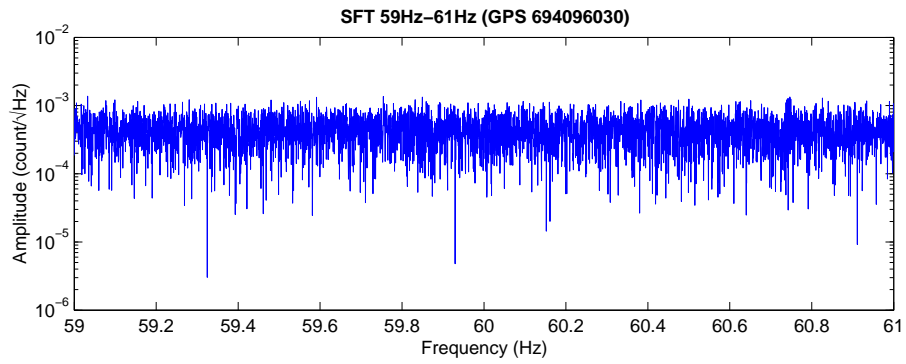
GPS 693911689 (2002 Jan 01 09:14:36 UTC)

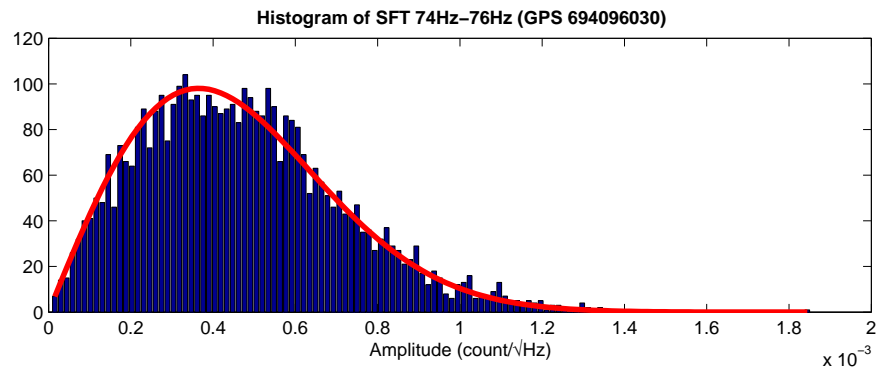
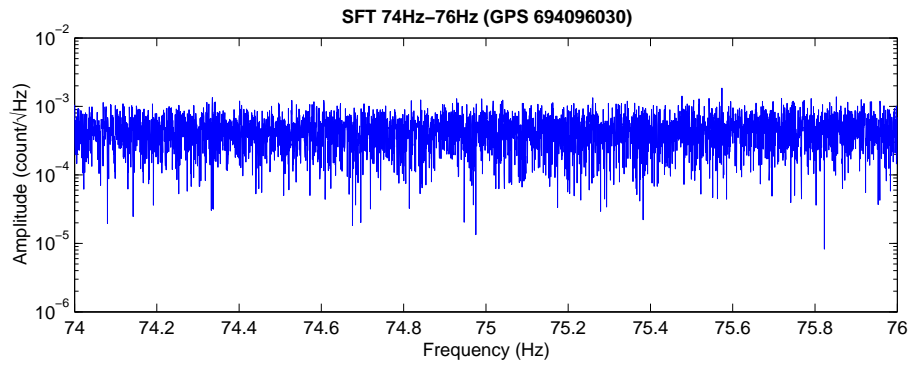


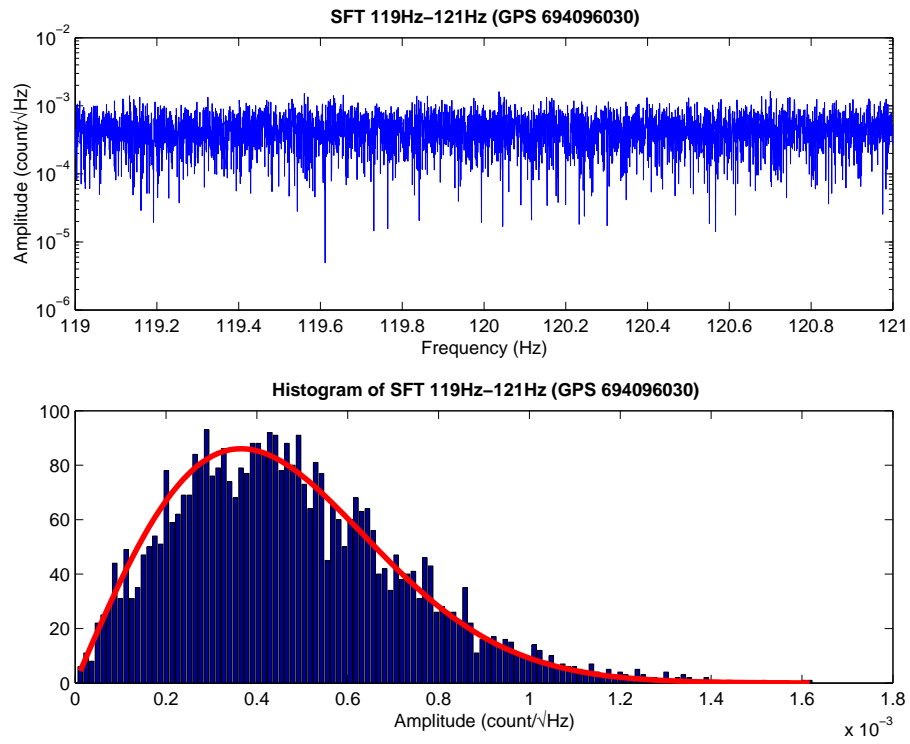




GPS 694096030 (2002 Jan 03 12:26:57 UTC)







Summary

Assumption of Gaussianity is not valid at all times. More extensive and systematic investigations will be done.