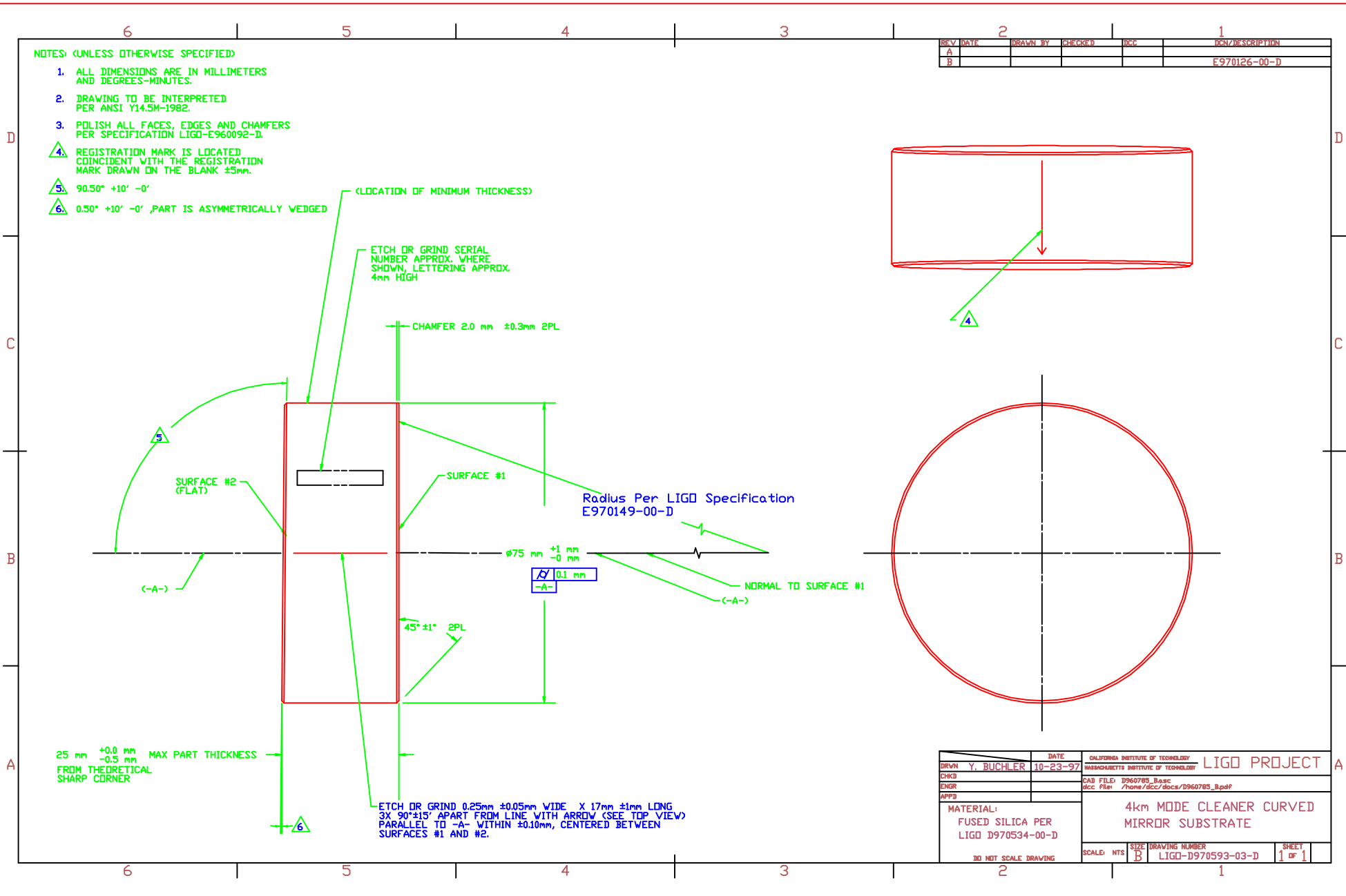


NOTES: (UNLESS OTHERWISE SPECIFIED)

1. ALL DIMENSIONS ARE IN MILLIMETERS AND DEGREES-MINUTES.
2. DRAWING TO BE INTERPRETED PER ANSI Y14.5M-1982.
3. POLISH ALL FACES, EDGES AND CHAMFERS PER SPECIFICATION LIGD-E960092-D.
4. REGISTRATION MARK IS LOCATED COINCIDENT WITH THE REGISTRATION MARK DRAWN ON THE BLANK $\pm 5\text{mm}$.
5. $90.50^\circ +10' -0'$
6. $0.50^\circ +10' -0'$, PART IS ASYMMETRICALLY WEDGED

REV	DATE	DRAWN BY	CHECKED	DCI	DCN/DESCRIPTION
A					
B					E970126-00-D



DATE	CALIFORNIA INSTITUTE OF TECHNOLOGY	LIGD PROJECT
10-23-97	MARSHALLS INSTITUTE OF TECHNOLOGY	
DRWN Y. BUCHLER	CAD FILE: D960785_Base	
ENGR	doc FILE: /home/dcc/doc/D960785_B.pdf	
APPD		
MATERIAL:	4km MODE CLEANER CURVED MIRROR SUBSTRATE	
FUSED SILICA PER LIGD D970534-00-D	SCALE: NTS	SHEET 1 OF 1
3D NET SCALE DRAWING	SIZE B	DRAWING NUMBER LIGD-D970593-03-D