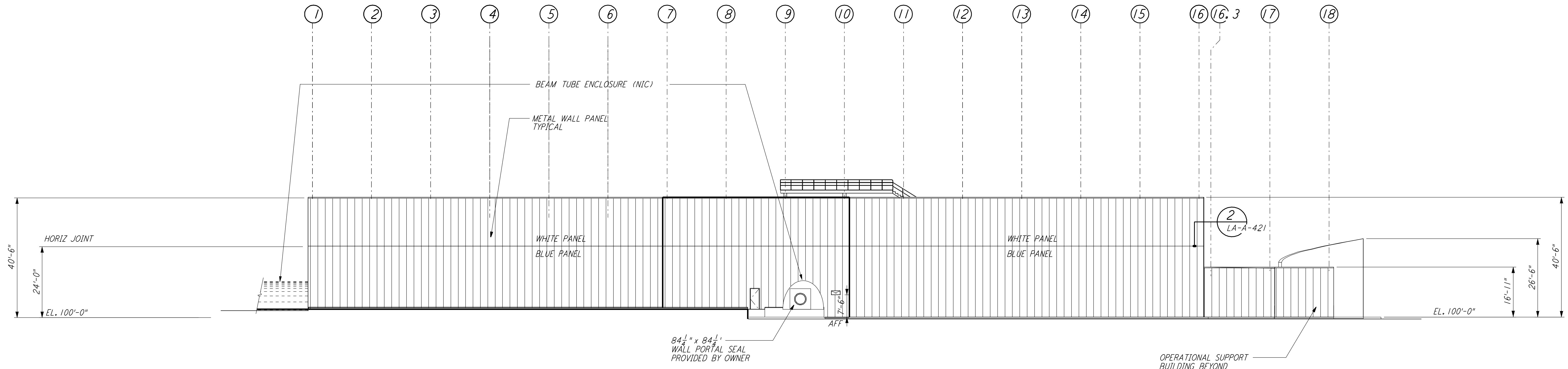
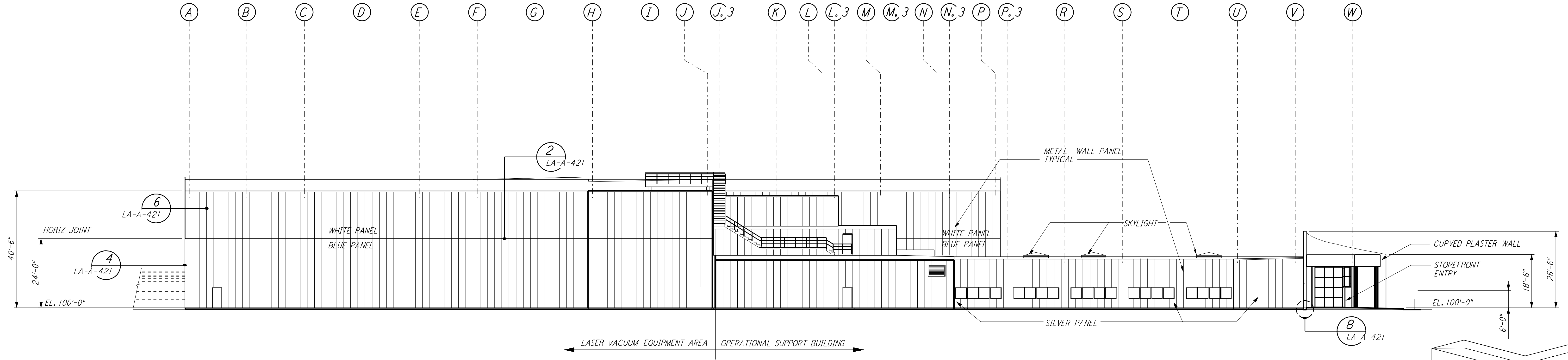


not be reproduced, copied, loaned, exhibited, or used in any other way, except by written consent from PARSONS to the borrower.

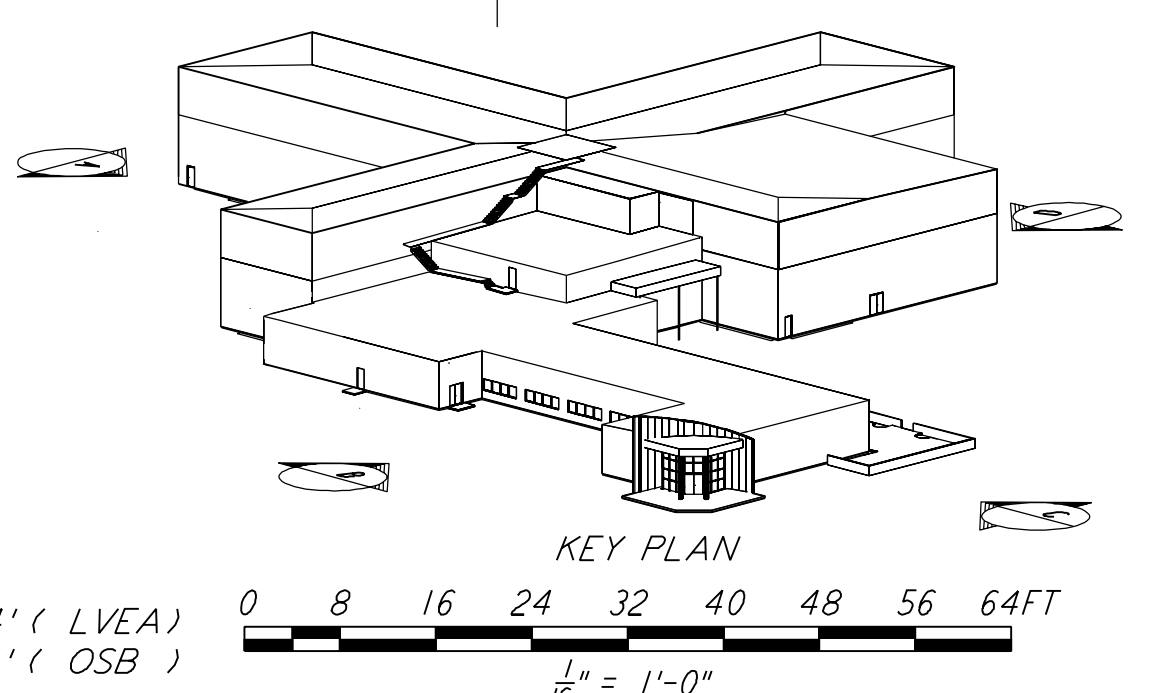
This document and the design it covers are the property of PARSONS. They are loaned only with the borrower's expressed written agreement that they will



**ELEVATION A** REF  
 LA-A-141 LA-A-101  
 LA-A-107  
 1/8" = 1'-0"



**ELEVATION B** REF  
 LA-A-141 LA-A-101  
 LA-A-107  
 1/8" = 1'-0"



DATUM POINT EL +100.00 = 61.44' (LVEA)  
 DATUM POINT EL +100.00 = 61.44' (OSB)  
 1/8" = 1'-0"

**LIGO-D960883-02-0**

NO.	DATE	BY	CHKD	ENGR	PROJ	DESCRIPTION
2	08-07-98	SJM				ISSUED FOR AS-BUILT
1	2-28-97	CKT	TB	AK	TDM	OSB REVISION

ISSUED FOR CONSTRUCTION		
DRAWN	CKT	11-15-96
CHECKED	TB	11-15-96
ENGINEER	SF	11-15-96
PROJ	MDW	11-15-96

**AS-BUILT DRAWINGS**

**PARSONS**  
 100 WEST WALNUT STREET  
 PASADENA, CALIFORNIA

**LIGO**  
 CALIFORNIA INSTITUTE OF TECHNOLOGY  
 MASSACHUSETTS INSTITUTE OF TECHNOLOGY

LASER INTERFEROMETER  
 GRAVITATIONAL-WAVE OBSERVATORY  
 SITE NO. 2 - LIVINGSTON, LOUISIANA

**ARCHITECTURAL CORNER STATION LVEA & OSB ELEVATIONS SHEET 1**

SCALE: AS NOTED  
 CONTRACT NUMBER: PP150969  
 PROJECT NUMBER: 8094

**LA-A-141**

Wed Oct 7 9:32:13 1998 c:\p1\l\ref\335330.dwg NS:\D:\EUS\2302\wrl41.dwg