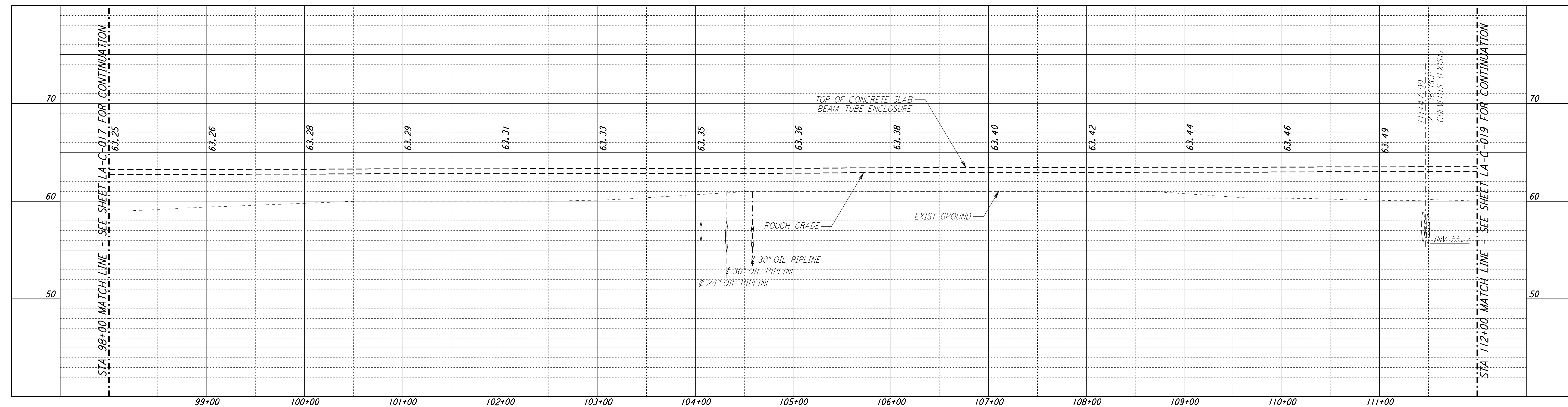
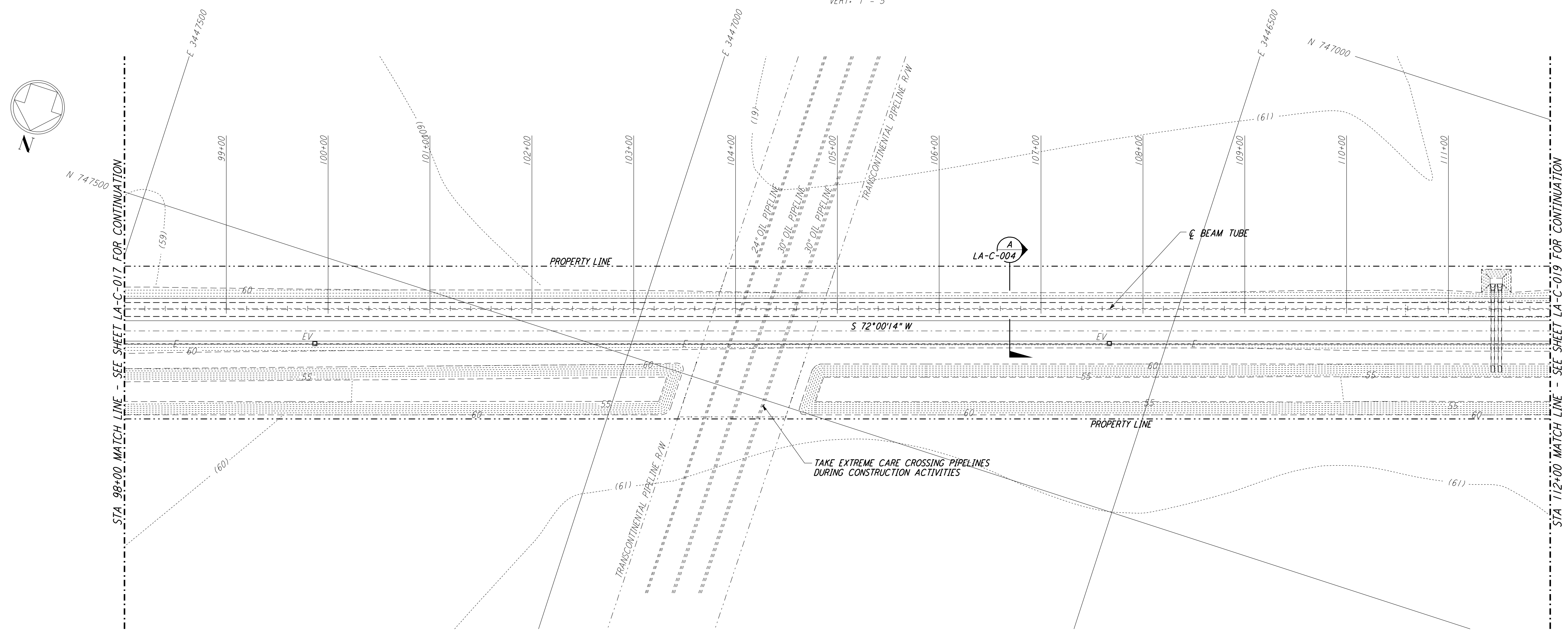


**NOTES:**

1. SEE SHEET LA-C-002 FOR GENERAL NOTES, LEGEND AND ABBREVIATIONS.
2. SEE SHEET LA-C-004 FOR TYPICAL SECTIONS AND DETAILS.

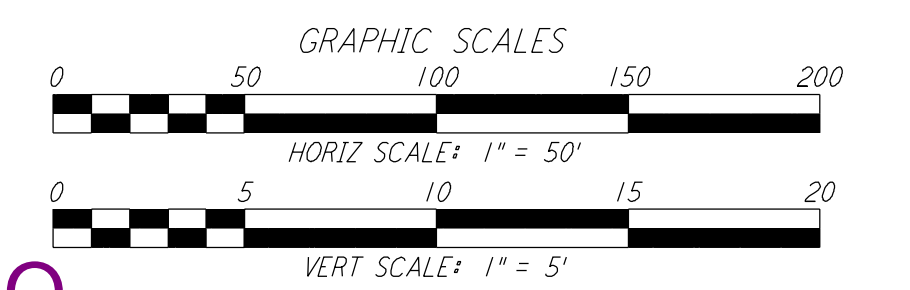
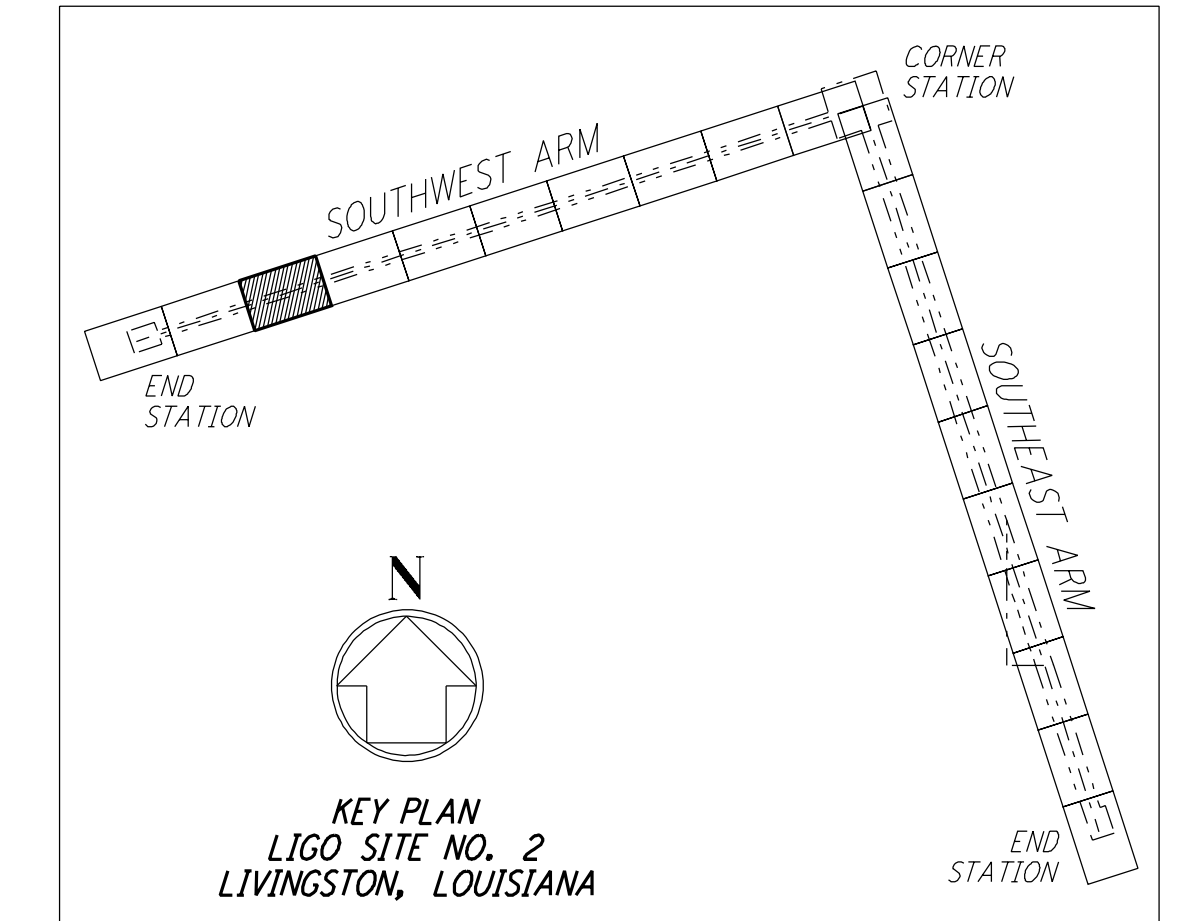


**PROFILE**  
 SCALES: HORIZ: 1" = 50'  
 VERT: 1" = 5'



**PLAN**  
 SCALE: 1" = 50'

**NOTE:**  
 LIGO SOUTHWEST ARM CROSSING OF TRANSCONTINENTAL PIPELINE R/W OCCURS WITHIN LIVINGSTON PARISH, LOUISIANA, TOWNSHIP 6 SOUTH - RANGE 4 EAST, SECTION 4.



LIGO-D960836-02-0

| NO. | DATE     | BY  | CHKD | ENGR | PROJ | DESCRIPTION                |
|-----|----------|-----|------|------|------|----------------------------|
| 2   | 08-07-98 | WRB |      |      |      | ISSUED FOR AS-BUILT        |
| 1   | 2-3-97   | WRB | ML   | JB   | TDM  | REVISED PROFILE ELEVATIONS |

| ISSUED FOR CONSTRUCTION |     |          |  |
|-------------------------|-----|----------|--|
| DRAWN                   | WRB | 11-15-96 |  |
| CHECKED                 | ML  | 11-15-96 |  |
| ENGINEER                | JB  | 11-15-96 |  |
| PROJ                    | TDM | 11-15-96 |  |

**AS-BUILT DRAWINGS**

**PARSONS**  
 100 WEST WALNUT STREET  
 PASADENA, CALIFORNIA

**LIGO**  
 CALIFORNIA INSTITUTE OF TECHNOLOGY  
 MASSACHUSETTS INSTITUTE OF TECHNOLOGY

**LASER INTERFEROMETER GRAVITATIONAL-WAVE OBSERVATORY SITE NO. 2 - LIVINGSTON, LOUISIANA**

CIVIL SOUTHWEST ARM PLAN AND PROFILE STA 98+00 TO STA 112+00

AS NOTED PP150969 8094

**LA-C-018**

This document and the design it covers are the property of PARSONS. They are loaned only with the borrower's expressed written agreement that they will not be reproduced, copied, loaned, exhibited, or used in any other way, except by written consent from PARSONS to the borrower.

This document and the design it covers are the property of PARSONS. They are loaned only with the borrower's expressed written agreement that they will not be reproduced, copied, loaned, exhibited, or used in any other way, except by written consent from PARSONS to the borrower.

Tue Oct 6 12:45:08 1998 en:\plott\ref\337-30.dwg H:\DUCUES\CE\3092\CE018.dwg