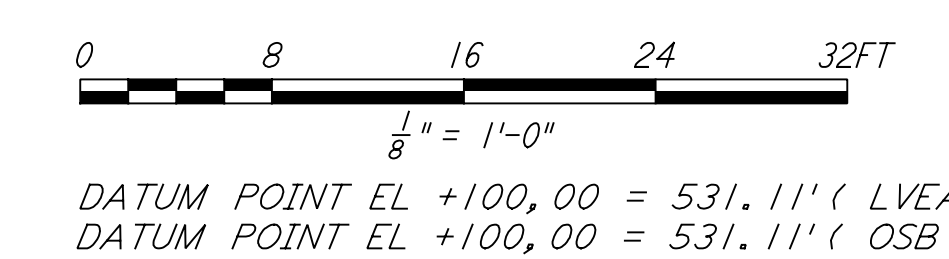
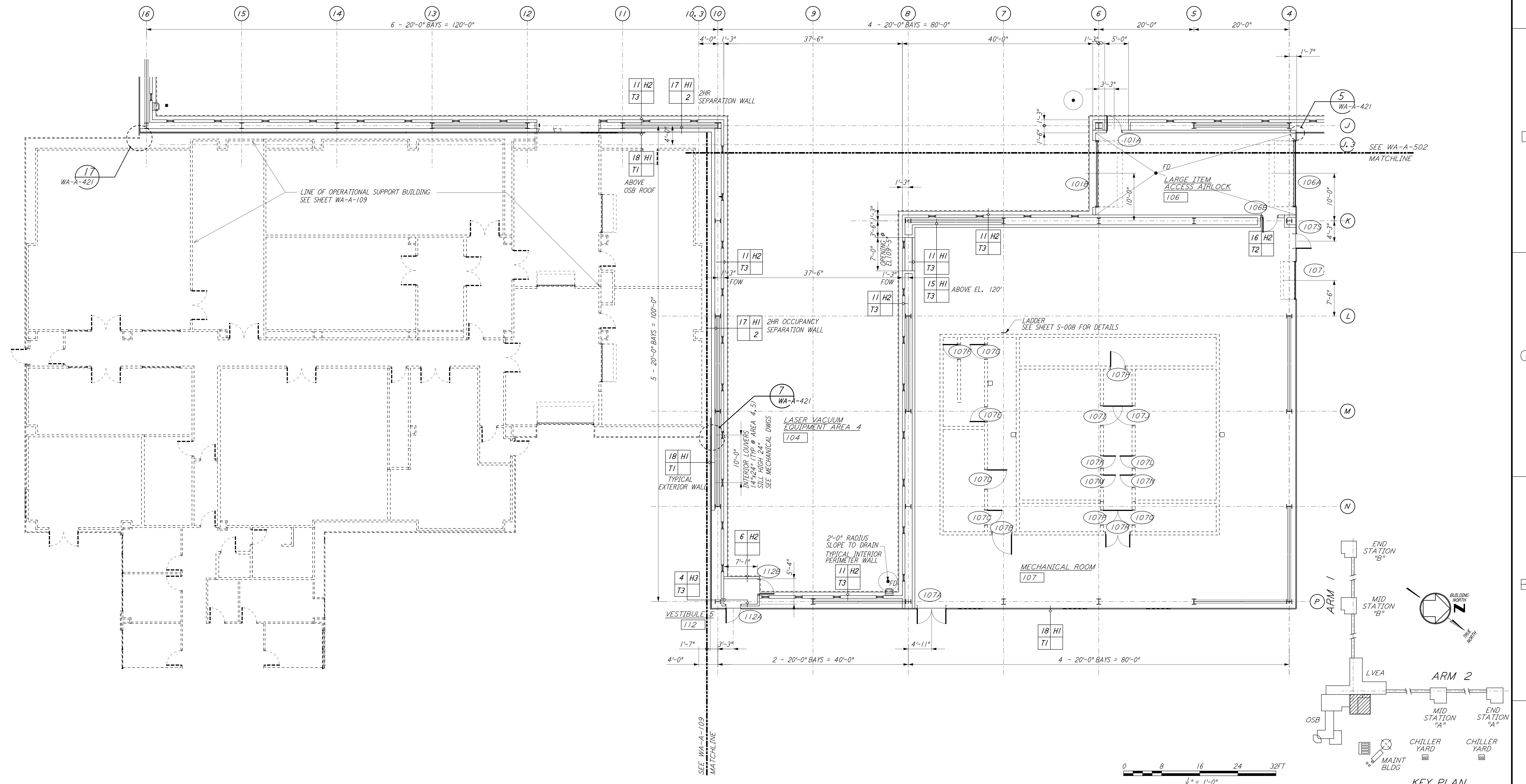


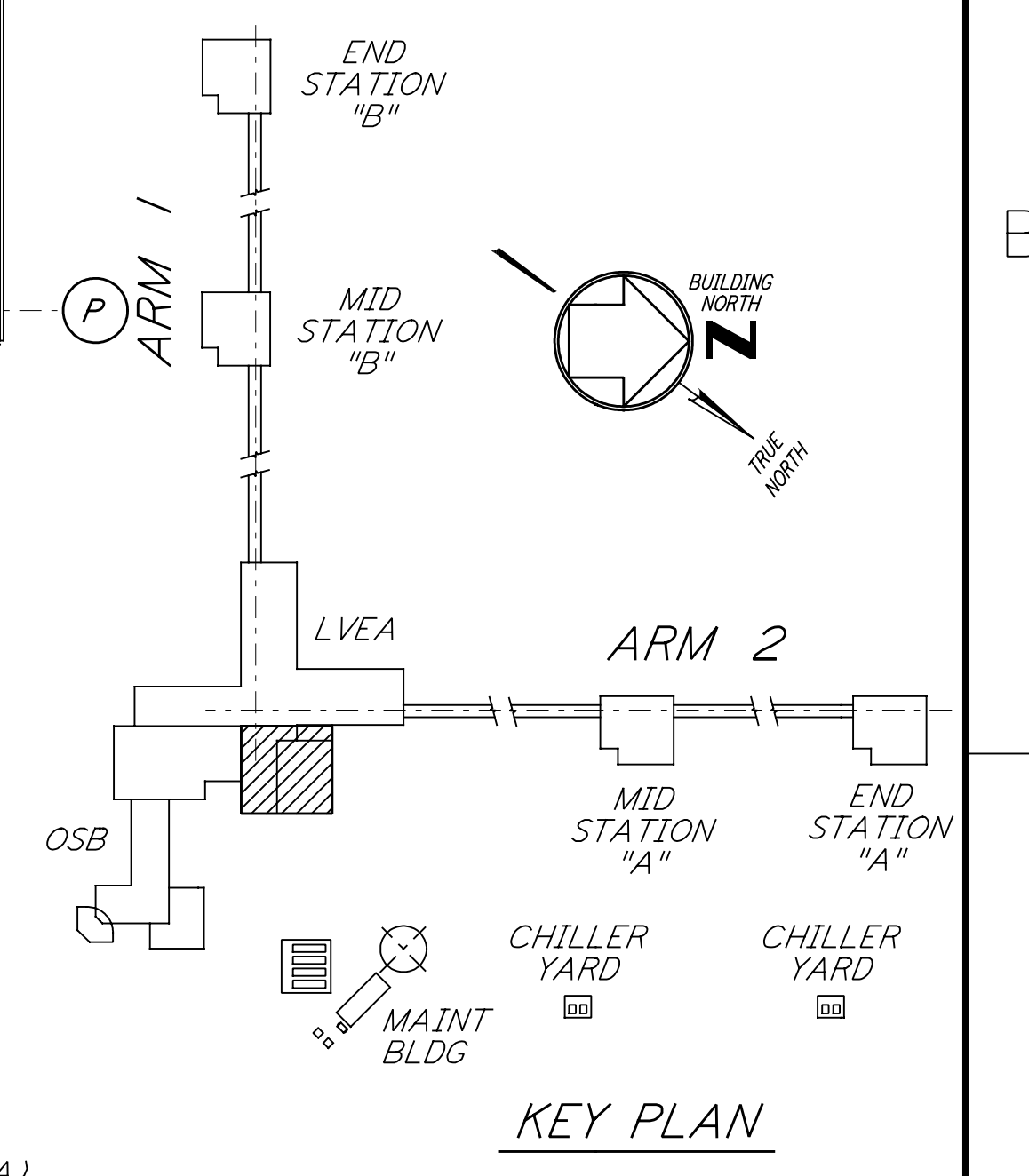
NOTE: SEE SPECIFICATIONS FOR ADDITIONAL INFORMATION AND SCHEDULES

This document and the design it covers are the property of PARSONS. They are loaned only with the borrower's expressed written agreement that they will not be reproduced, copied, loaned, exhibited, or used in any other way, except by written consent from PARSONS to the borrower.

This document and the design it covers are the property of PARSONS. They are loaned only with the borrower's expressed written agreement that they will not be reproduced, copied, loaned, exhibited, or used in any other way, except by written consent from PARSONS to the borrower.



DATUM POINT EL +100.00 = 531.11' (LVEA)
 DATUM POINT EL +100.00 = 531.11' (OSB)



NO.	DATE	BY	CHKD	ENGR	PROJ	DESCRIPTION
1	2-28-97	CKT	TB	AK	TDM	CORNER STATION VSEA PARTITION
2	5-15-98	CKT				ISSUED FOR AS-BUILT

ISSUED FOR CONSTRUCTION	
DRAWN	CKT/DS 5-12-96
CHECKED	TB 5-26-96
ENGINEER	bkk 7-12-96
PROJ	MDW 7-12-96
AS-BUILT DRAWINGS	

100 WEST WALNUT STREET
PASADENA, CALIFORNIA

CALIFORNIA INSTITUTE OF TECHNOLOGY
MASSACHUSETTS INSTITUTE OF TECHNOLOGY

LASER INTERFEROMETER
GRAVITATIONAL-WAVE OBSERVATORY
SITE NO. 1 - HANFORD, WASHINGTON

TITLE	ARCHITECTURAL CORNER STATION LVEA PARTIAL FLOOR PLAN SHEET 4	SCALE	AS NOTED	PROJECT NUMBER	8094
SHEET NUMBER	WA-A-505	REVISIONS			