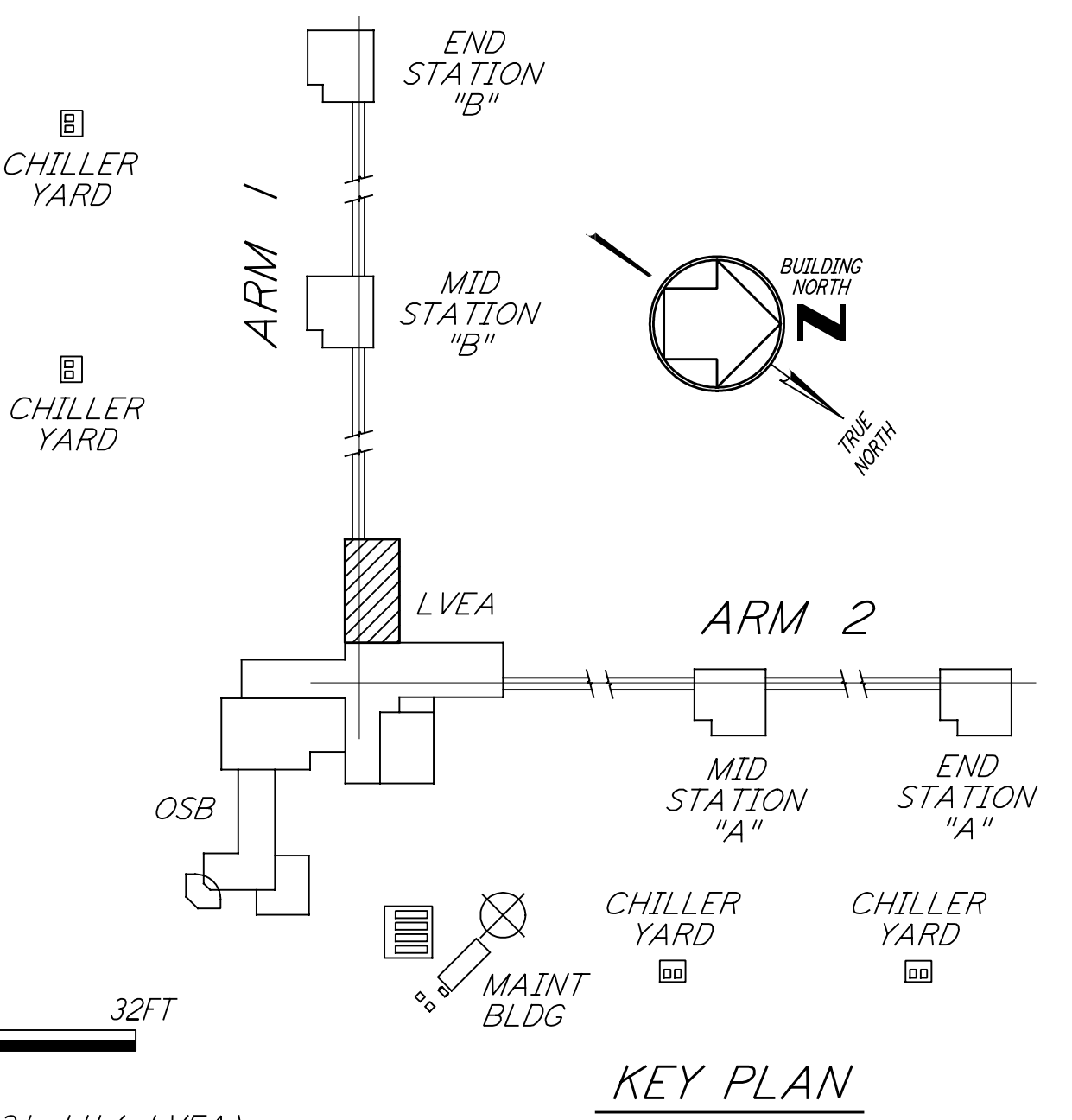
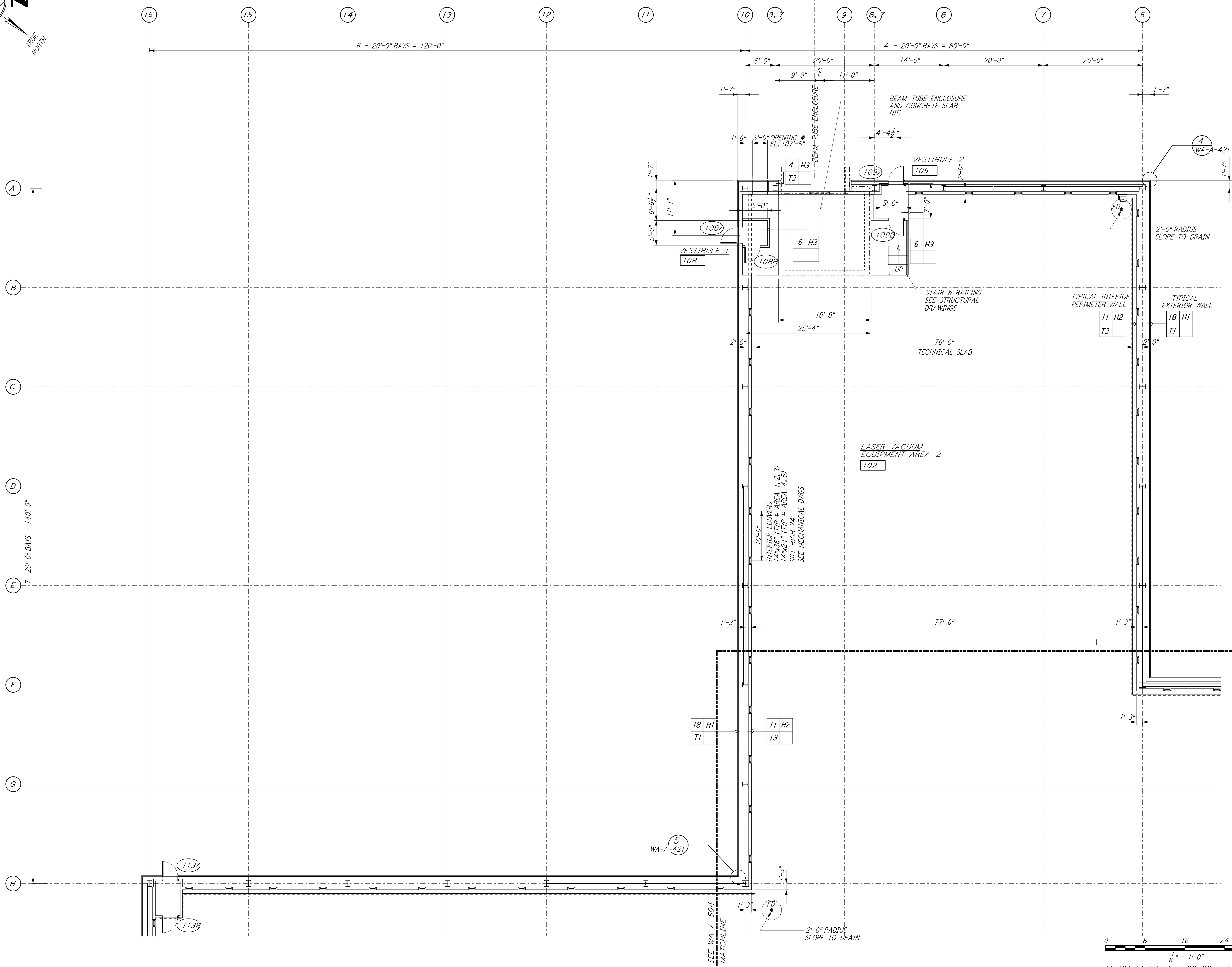
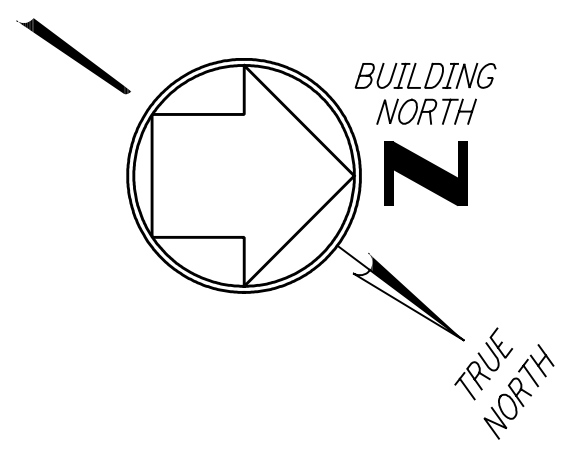


NOTE: SEE SPECIFICATIONS FOR ADDITIONAL INFORMATION AND SCHEDULES



0 8 16 24 32 FT  
 1/8" = 1'-0"  
 DATUM POINT EL +100.00 = 531.11' (LVEA)  
 DATUM POINT EL +100.00 = 531.11' (OSB)

This document and the design it covers are the property of PARSONS. They are loaned only with the borrower's expressed written agreement that they will not be reproduced, copied, loaned, exhibited, or used in any other way, except by written consent from PARSONS to the borrower.

This document and the design it covers are the property of PARSONS. They are loaned only with the borrower's expressed written agreement that they will not be reproduced, copied, loaned, exhibited, or used in any other way, except by written consent from PARSONS to the borrower.

| NO. | DATE    | BY  | CHKD | ENGR | PROJ | DESCRIPTION         |
|-----|---------|-----|------|------|------|---------------------|
| 1   | 5-15-98 | CKT |      |      |      | ISSUED FOR AS-BUILT |

|                          |
|--------------------------|
| ISSUED FOR CONSTRUCTION  |
| DRAWN CKT/DS 5-12-96     |
| CHECKED TB 5-26-96       |
| ENGINEER bkk 7-12-96     |
| PROJ MDW 7-12-96         |
| <b>AS-BUILT DRAWINGS</b> |



|  |          |                |
|--|----------|----------------|
| LASER INTERFEROMETER GRAVITATIONAL-WAVE OBSERVATORY SITE NO. 1 - HANFORD, WASHINGTON |          |                |
| TITLE  | SCALE    | PROJECT NUMBER |
| ARCHITECTURAL CORNER STATION LVEA PARTIAL FLOOR PLAN SHEET 2                         | AS NOTED | PP150969 8094  |
| SHEET NUMBER   |          | REVISIONS      |
| <b>WA-A-503</b>  |          |                |