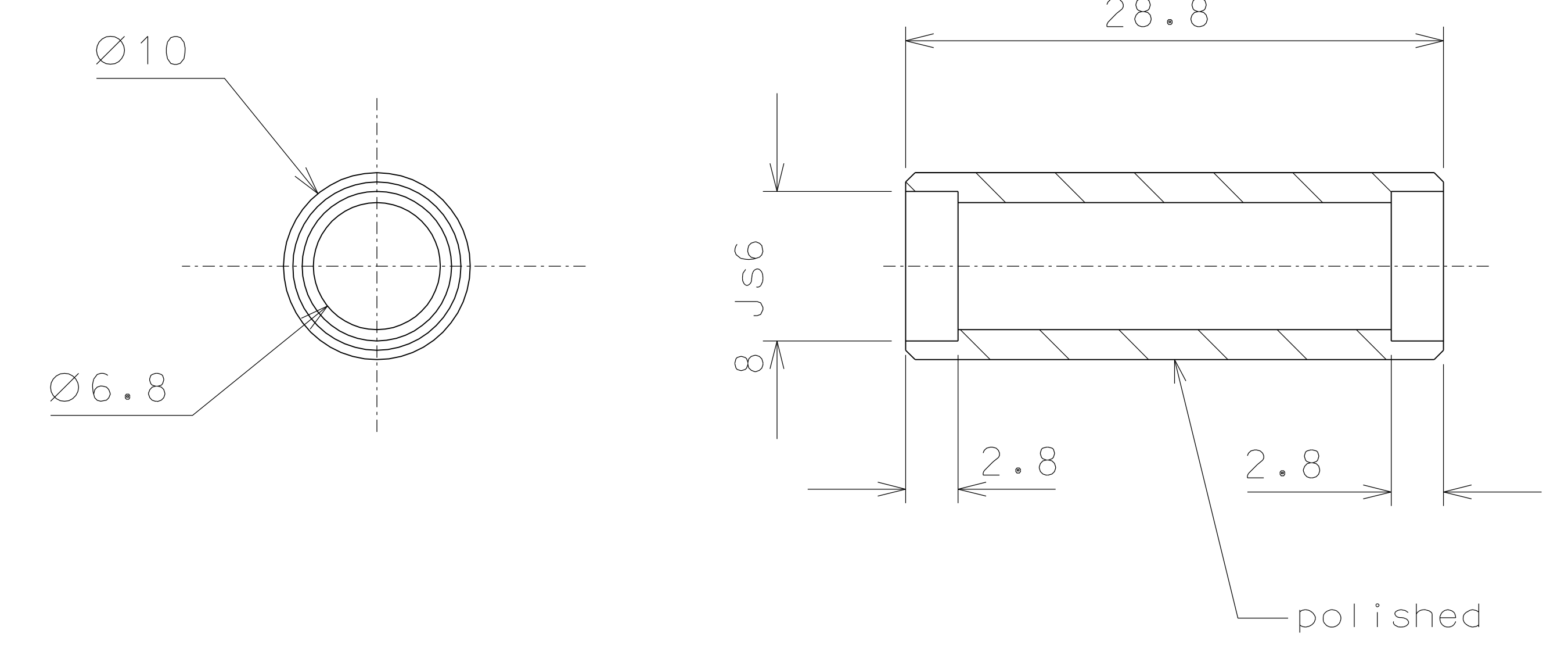
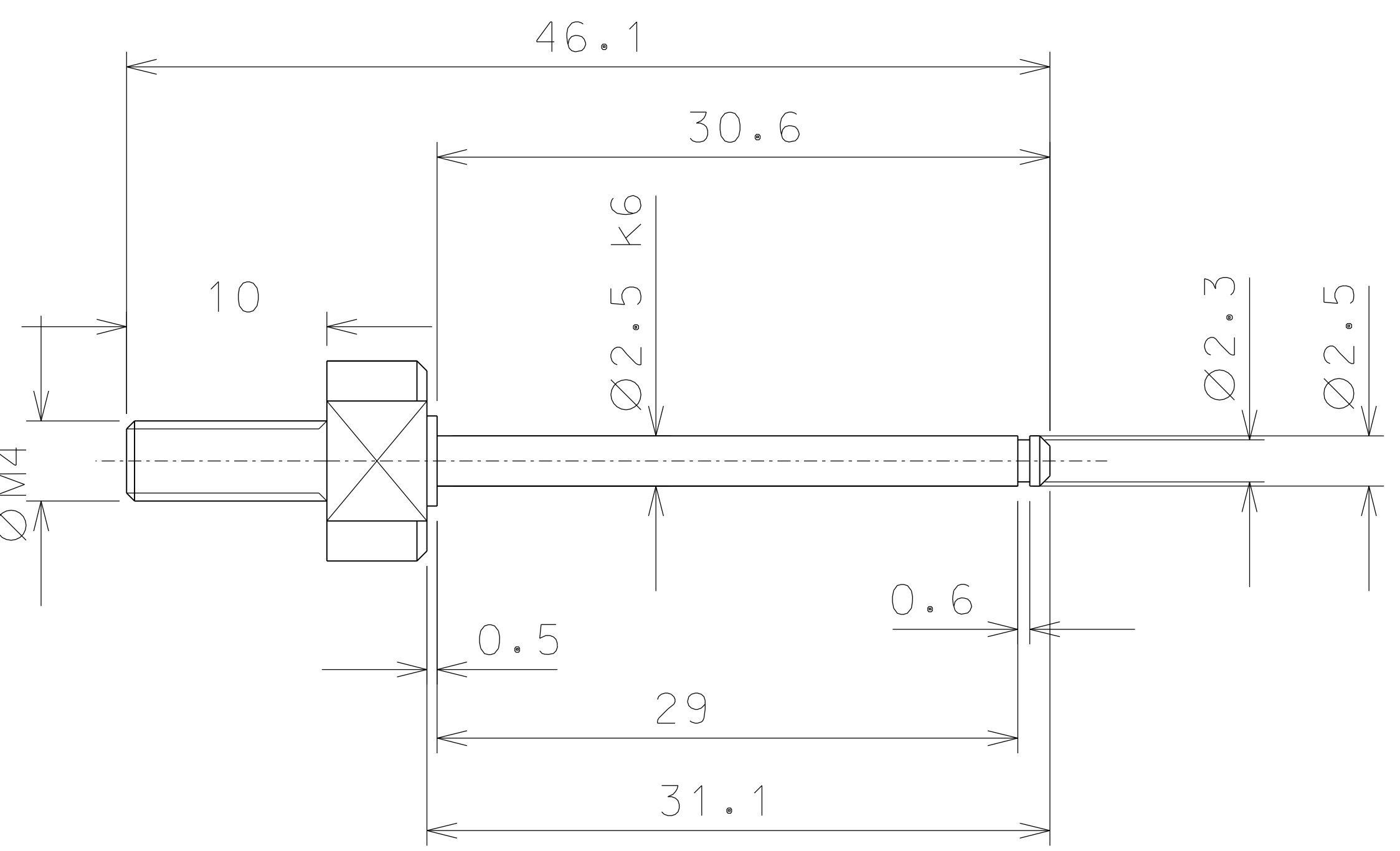
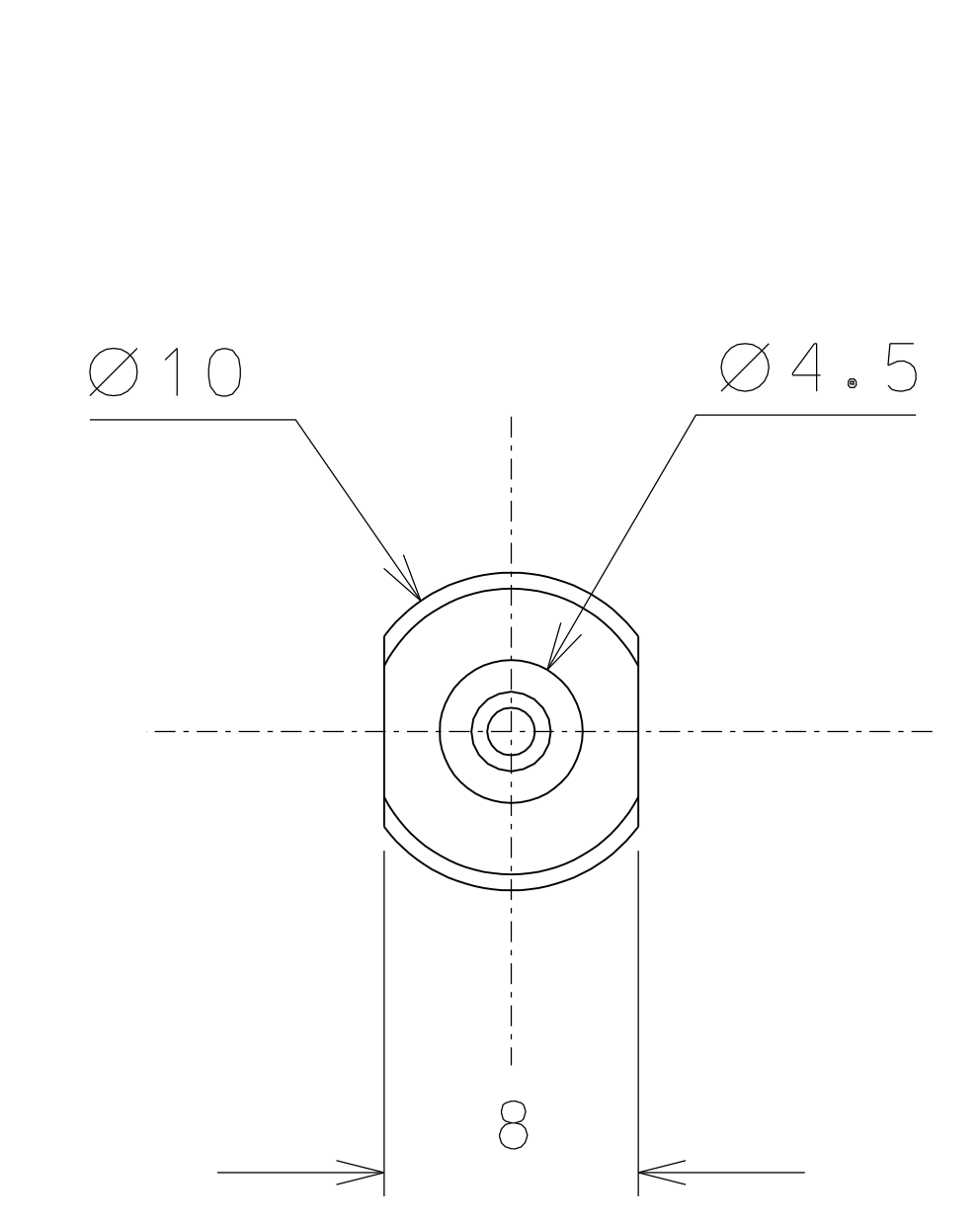


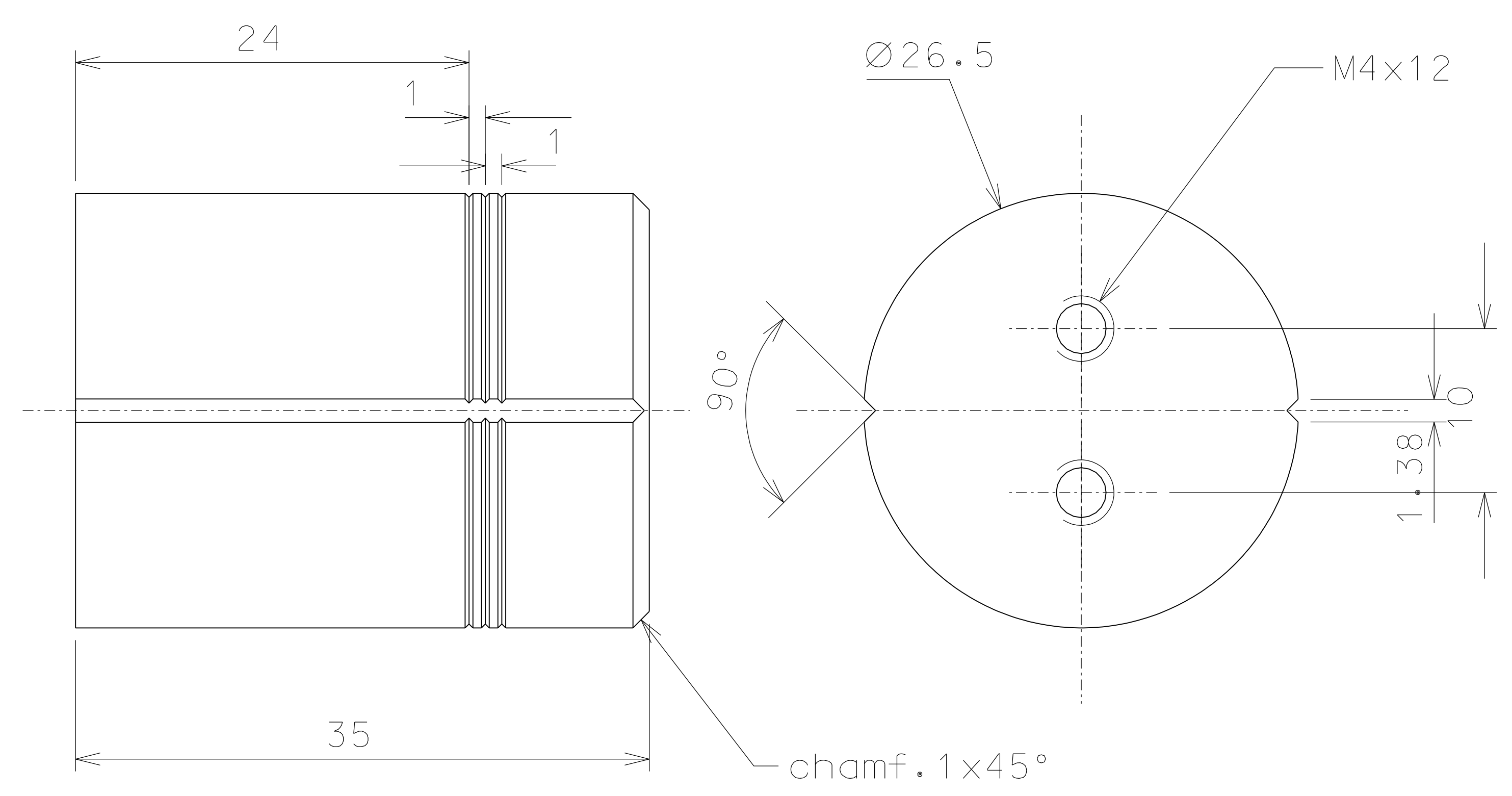
18



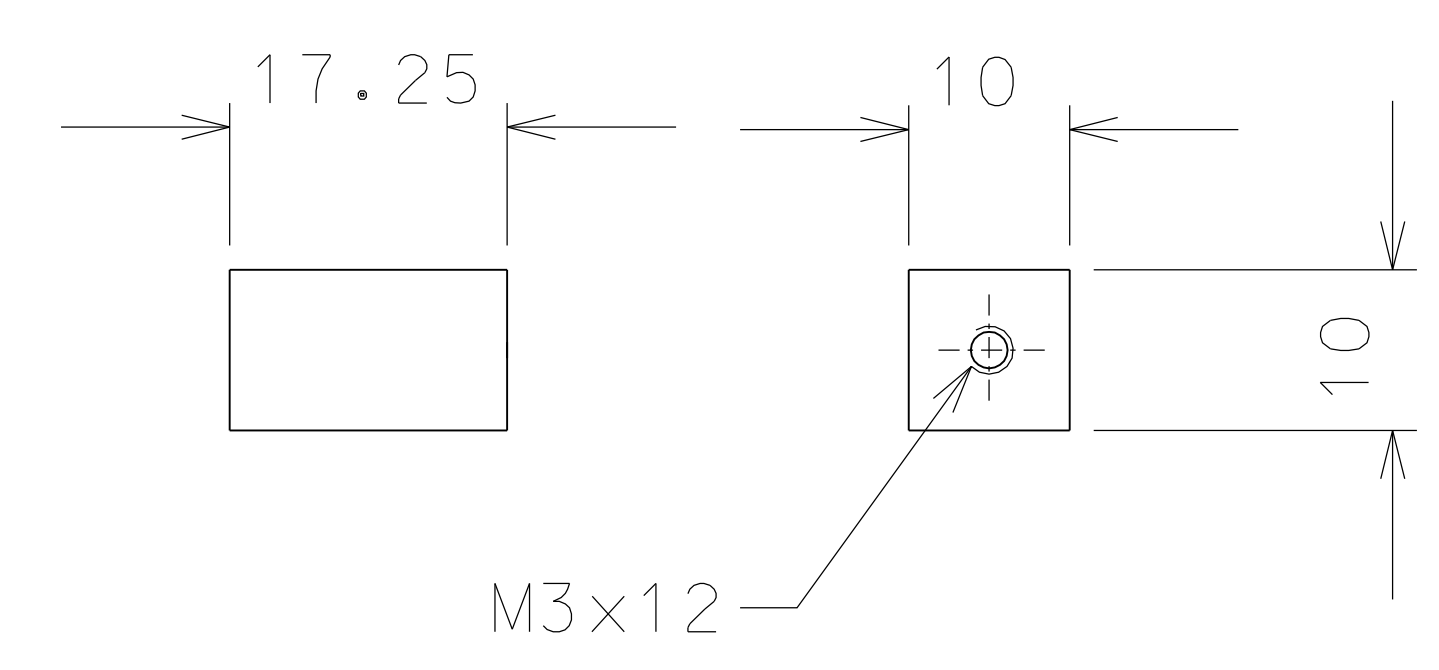
19



22



20



21

ref.	note	date	signature
modifications			
22	6 AISI 304	2/1	
21	2 EN 6082	1/1	
20	1 EN 6082	2/1	
19	6 EN 6082	2/1	
18	1 EN 6082	2/1	
ref.	pieces	mat. and treatments	scale

General machining tolerances UNI 5307-63								
Dimensions	< 6	> 6-30	> 30-120	> 120-315	> 315-1000	> 1000-2000	> 2000-4000	> 4000
linear Toll.	± 0.1	± 0.2	± 0.3	± 0.5	± 0.8	± 1.2	± 2	± 3
angular Toll.	± 1'	± 30'	± 20'	± 10' referred to the shortest side				
designed for		R.De Salvo						
draw. by		G.Gennaro-PROMECC						
date		15-10-08		scale		1/1		
title		MINI-TNI SOLDERING JIG						
LIGO PROJECT		LIGO-D081038-00-D		detail from		036 A 2		