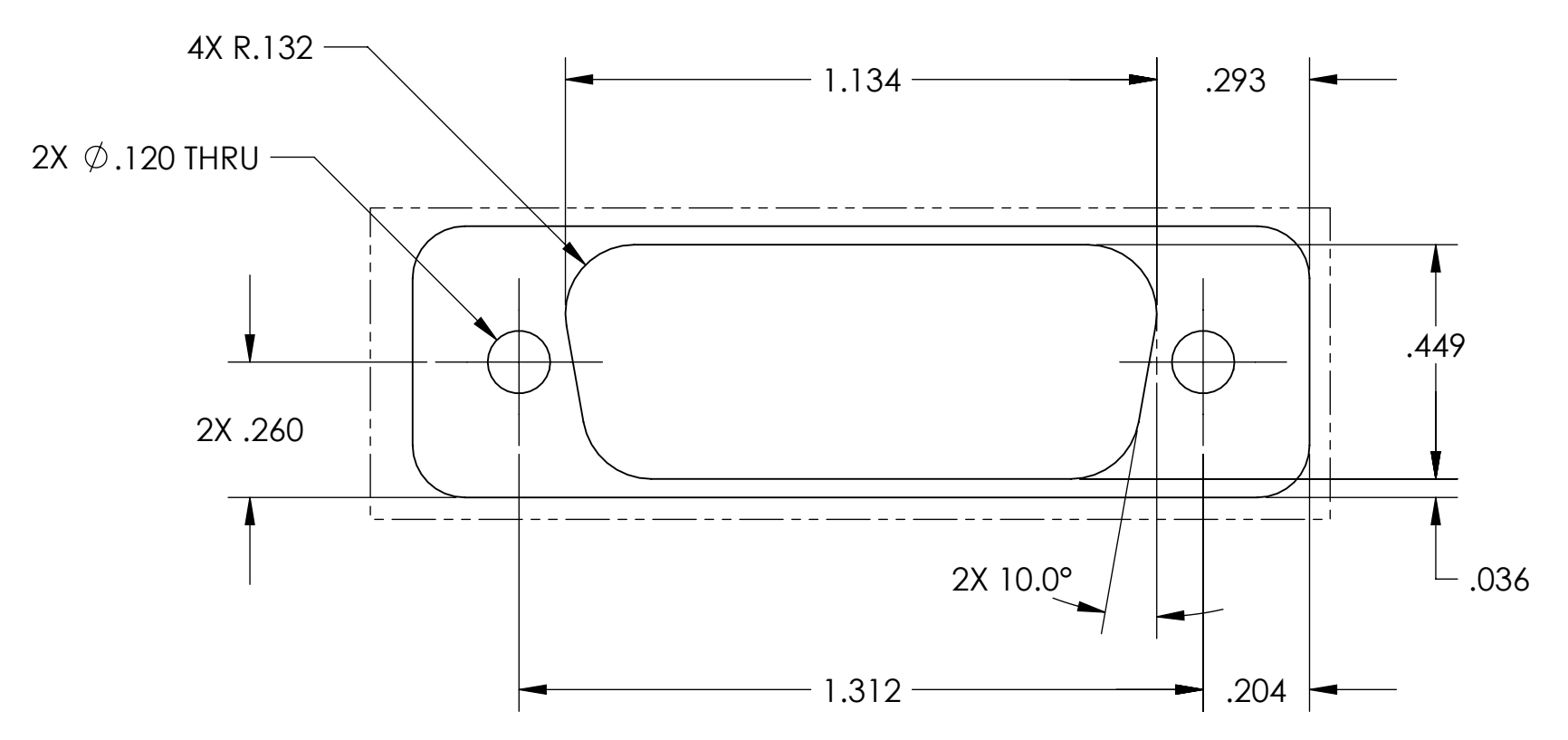
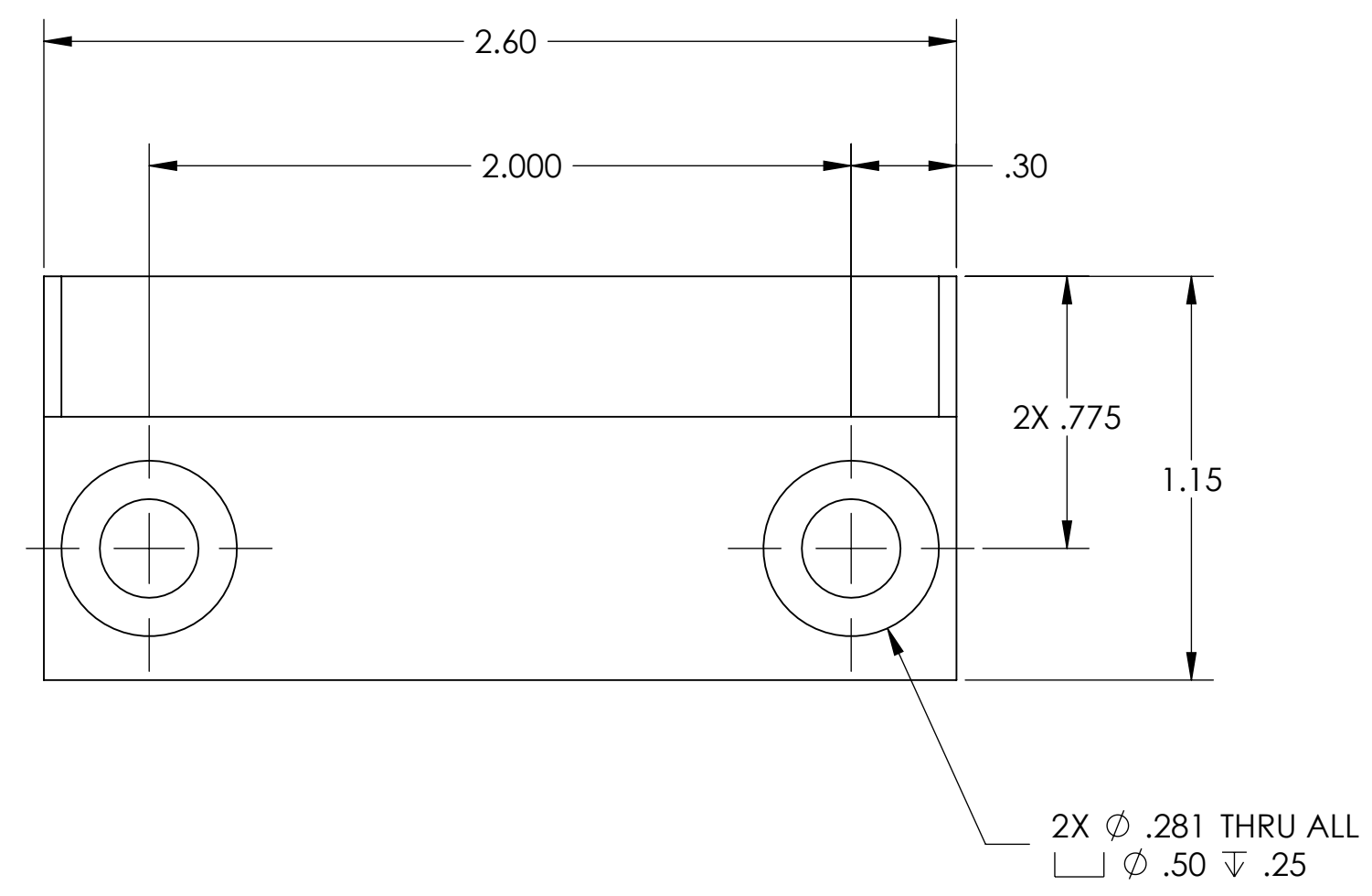
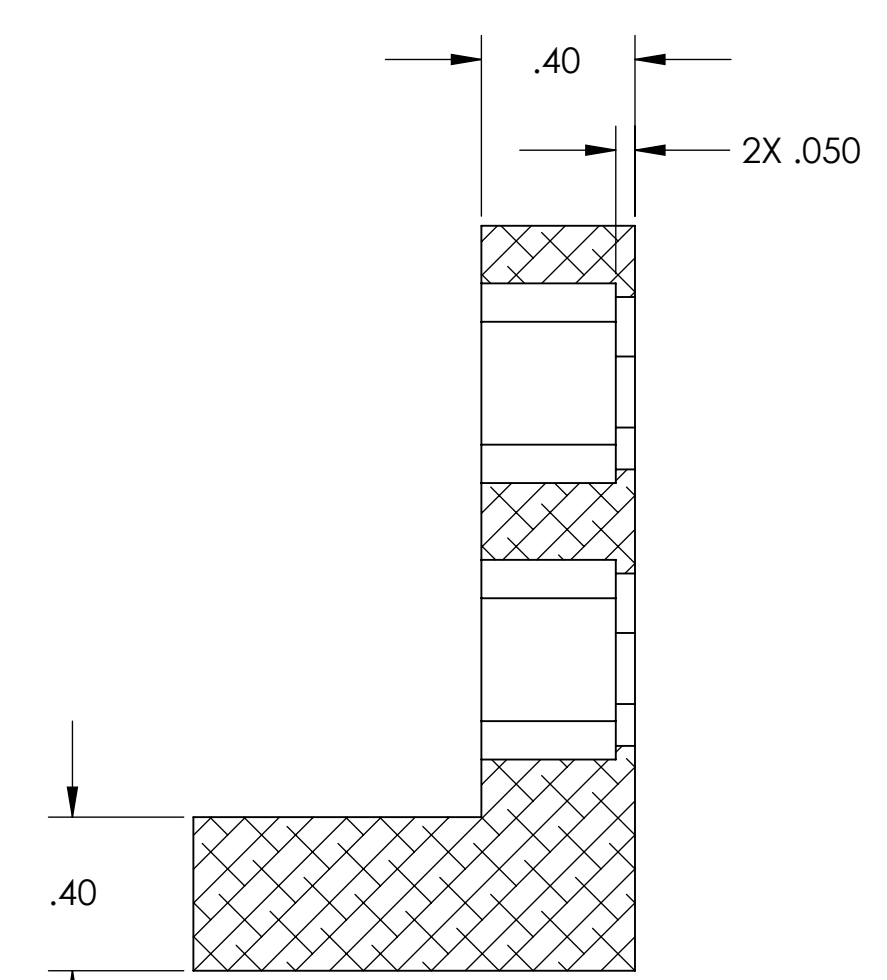
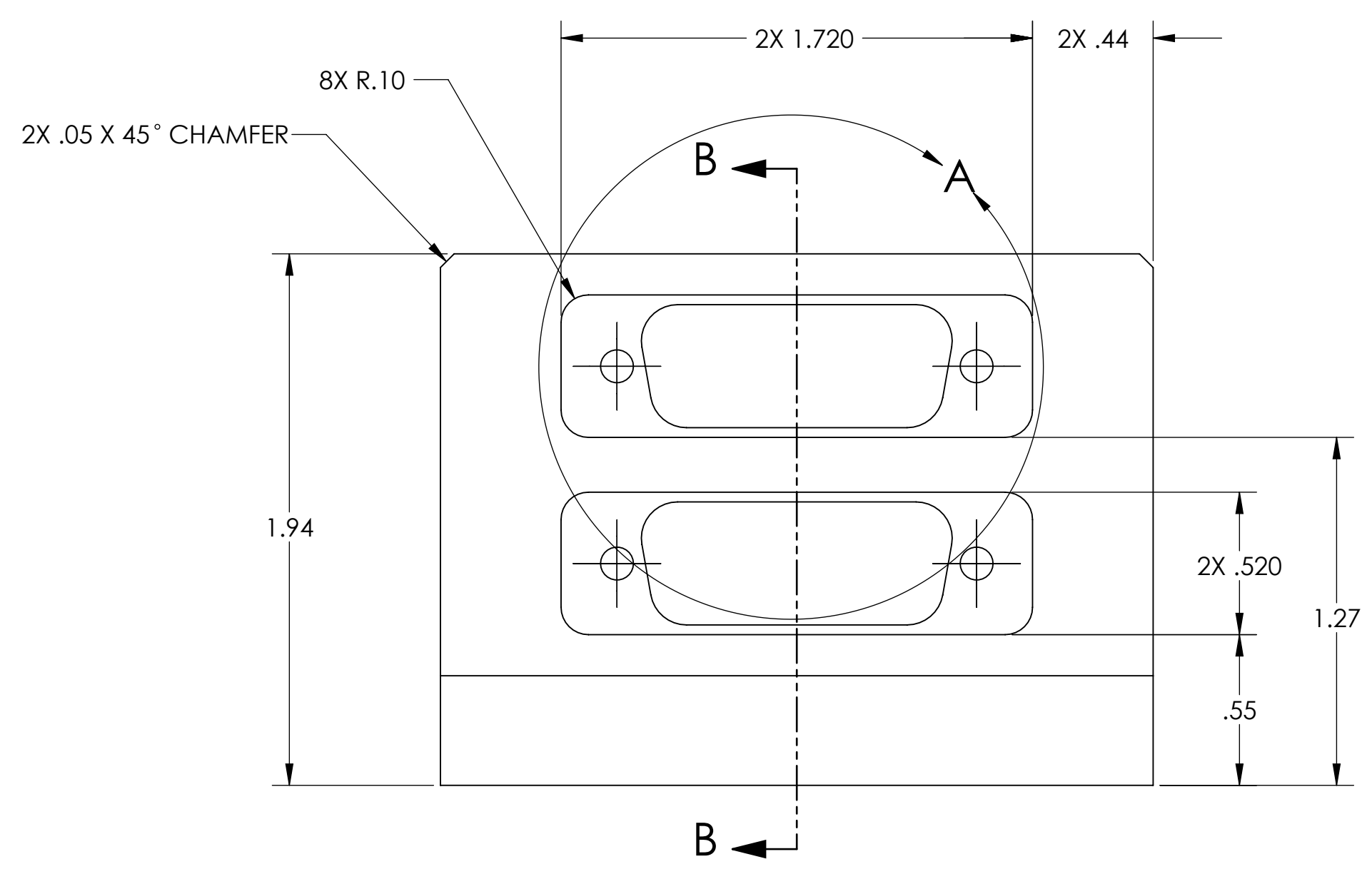


REV	DATE	APPROVAL	DESCRIPTION
A	11/9/2007	A. STEIN	INITIAL RELEASE



DETAIL A  
SCALE 3 : 1  
(15-PIN SUB-D CONNECTOR CUTOUT)  
2 PLACES



SECTION B-B

**NOTES: (UNLESS OTHERWISE SPECIFIED)**

- DO NOT SCALE FROM DRAWING.
- REMOVE ALL SHARP EDGES. LEAVE .005 X 45° MIN CHAMFER, OR .005 MIN RADIUS.
- MACHINE ALL SURFACES. NO SANDING OR TUMBLING ALLOWED.
- ALL MACHINING FLUIDS MUST BE WATER SOLUBLE AND FREE OF SULFUR, CHLORINE AND SILICONE. E.G., MILACRON CIMTECH 410.
- CLEAN THOROUGHLY TO REMOVE ALL OIL, DIRT, AND CHIPS.

DIMENSIONS ARE IN INCHES

TOLERANCES:  
XX ± 0.015  
XXX ± 0.005

ANGULAR ± 0.5°

SURFACE ROUGHNESS:

**MATERIAL**  
Al 6061-T6

**FINISH**  
NONE

**DRAWN**  
A. STEIN

**CHECKED**  
A. STEIN

**APPROVED**  
A. STEIN

**CALIFORNIA INSTITUTE OF TECHNOLOGY**  
MASSACHUSETTS INSTITUTE OF TECHNOLOGY  
IGR, GLASGOW UNIVERSITY GEO 600 GROUP

**SYSTEM**  
ADVANCED LIGO

**SUB-SYSTEM**  
SEI

**NEXT ASSY**  
HAM ISI

**PART NAME**  
BRACKET, 3-PIN POWER PEEK

**SCALE**  
2:1

**PROJECTION**

**SHEET 1 OF 1**

NAME	DATE
A. STEIN	11/9/2007

SIZE DWG. NO. D070503  
REV. A