

TOPI, TOP 2, TOP 3, LEFT  
To Coil Driver  
Sheet 2- Below

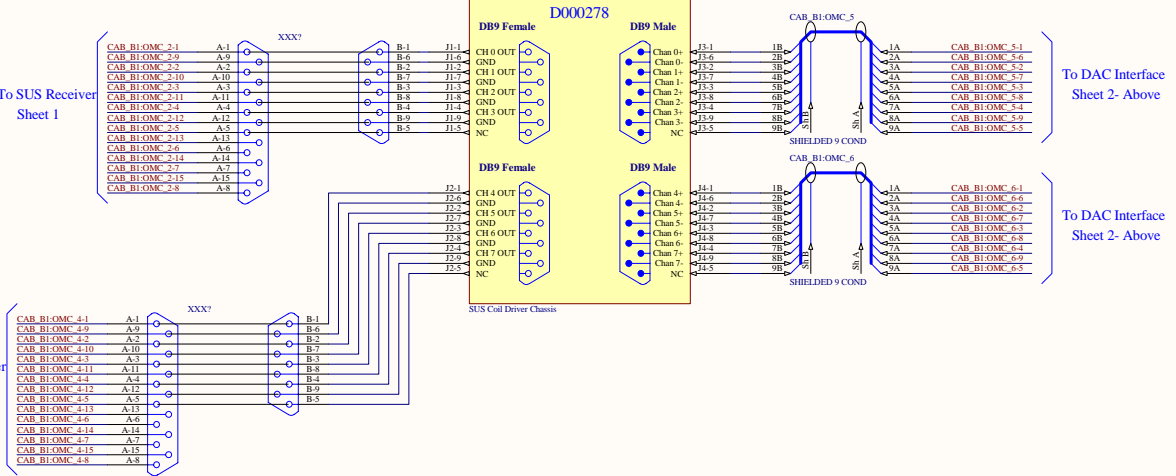
RIGHT, SIDE  
To Coil Driver  
Sheet 2- Below

DAC 1 Channel Index

CH0- TOP 1
CH1- TOP 2
CH2- TOP 3
CH3- LEFT
CH4- RIGHT
CH5- SIDE
CH6- NC
CH7- NC
CH8- NC
CH9- NC
CH10- NC
CH11- NC
CH12- NC
CH13- NC
CH14- NC
CH15- NC

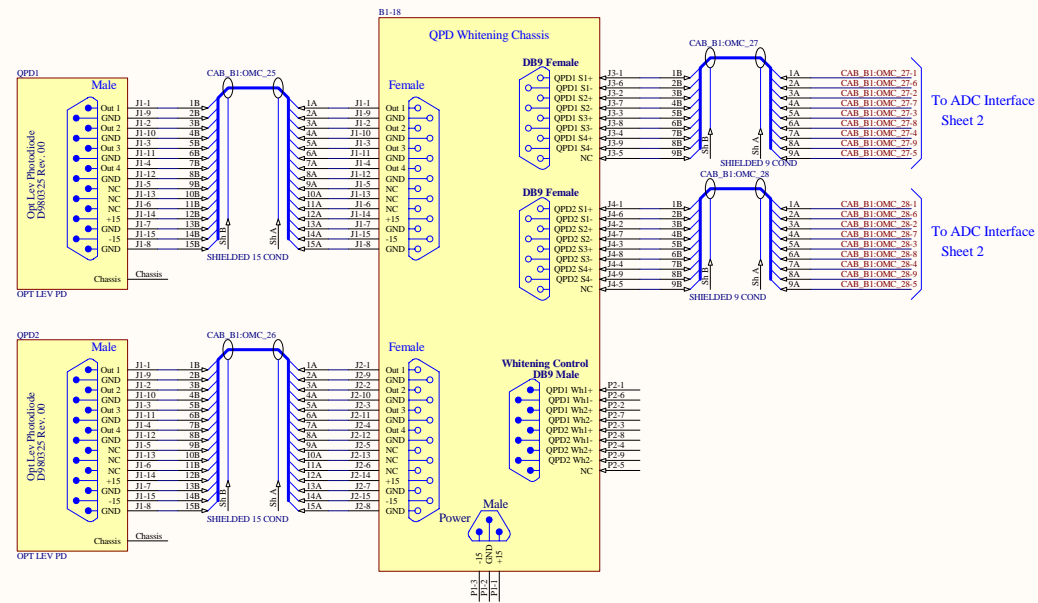
OMC OSEM's 1-6

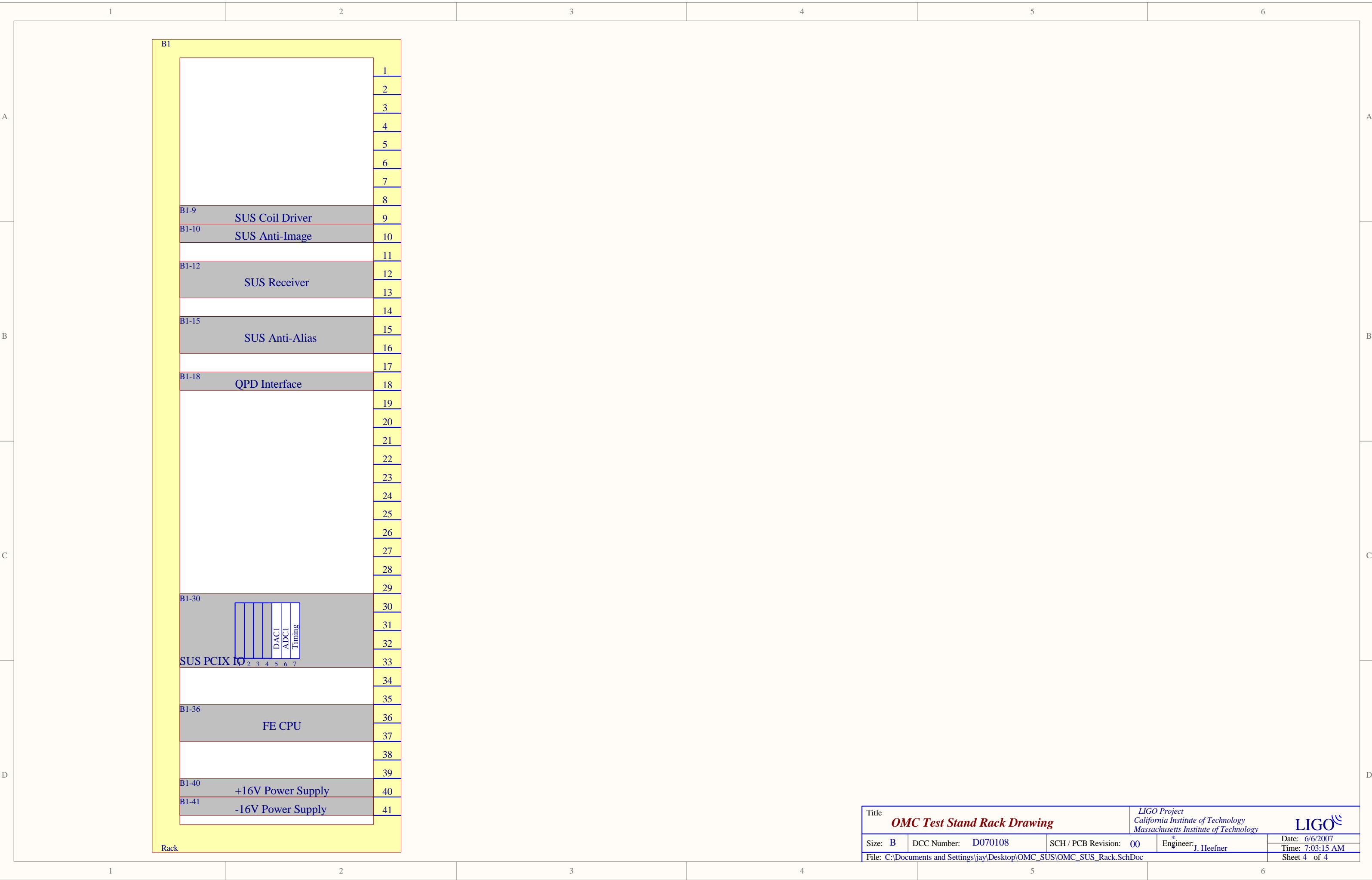
8 CH Coil Driver Chassis  
D000278



ADC Channel Index

CH0- TOP 1
CH1- TOP 2
CH2- TOP 3
CH3- LEFT
CH4- RIGHT
CH5- SIDE
CH6- NC
CH8- QPD1 S1
CH9- QPD1 S2
CH10- QPD1 S3
CH11- QPD1 S4
CH12- QPD2 S1
CH13- QPD2 S2
CH14- QPD2 S3
CH15- QPD2 S4
CH16- TOP 1 LED
CH17- TOP 2 LED
CH18- TOP 3 LED
CH19- LEFT LED
CH20- RIGHT LED
CH21- SIDE LED
CH22- NC
CH23- NC
CH24- NC
CH25- NC
CH26- Spare
CH27- Spare
CH28- Spare
CH29- Spare
CH30- Spare
CH31- 1PPS





Title		LIGO Project California Institute of Technology Massachusetts Institute of Technology		LIGO	
Size: B	DCC Number: D070108	SCH / PCB Revision: 00	Engineer: J. Heefner	Date: 6/6/2007	Time: 7:03:15 AM
File: C:\Documents and Settings\jay\Desktop\OMC_SUS\OMC_SUS_Rack.SchDoc					Sheet 4 of 4