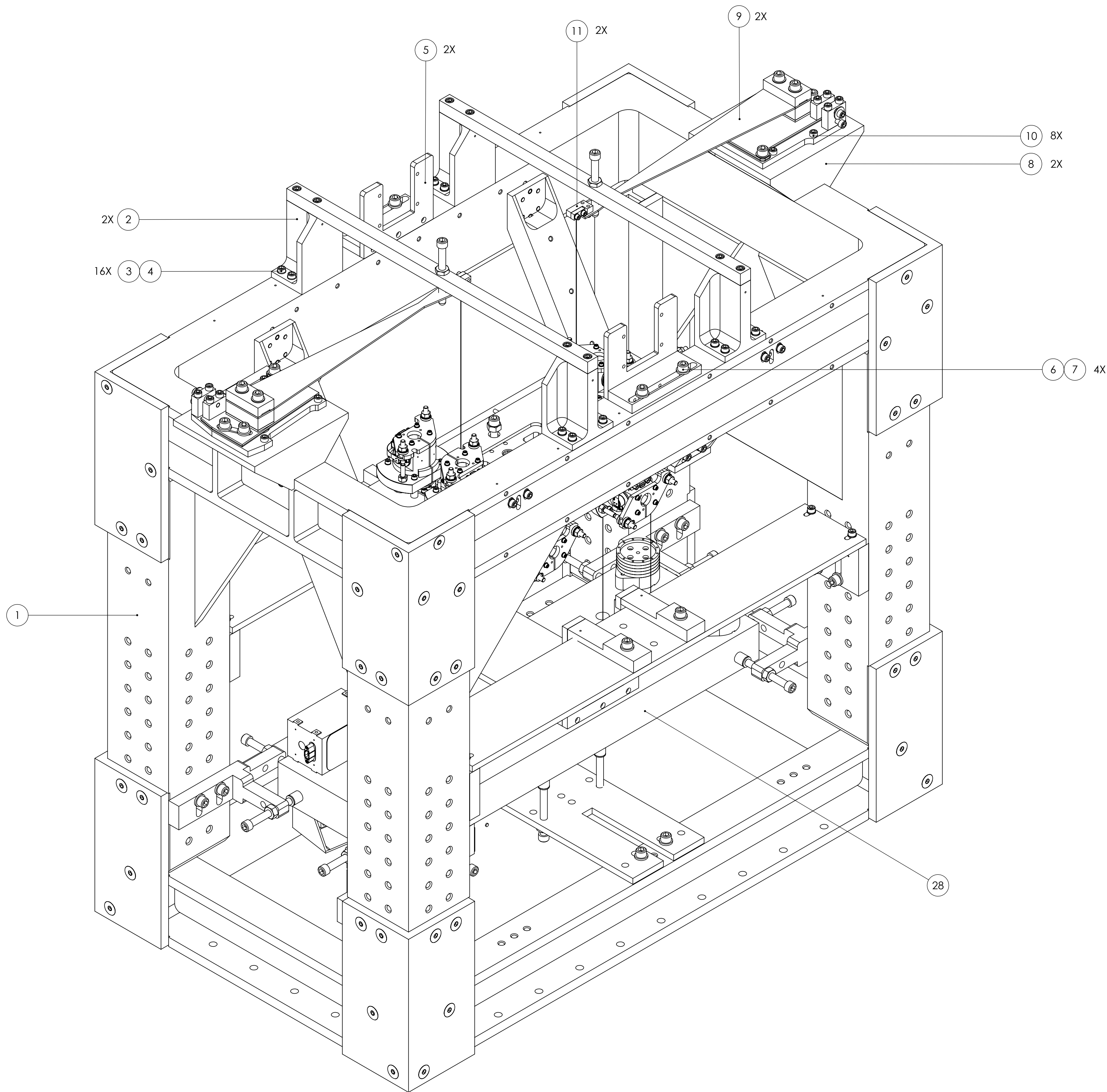


| REV. | DATE | DCN # | DRAWING TREE # |
|------|------------|--------------|----------------|
| A | 7 MAY 2008 | E080186-00-D | |



| ITEM NO. | REQ | SPARE | TOTAL | PART NUMBER | DESCRIPTION | MATERIAL |
|----------|-----|-------|-------|-------------|---|--------------------|
| 34 | 1 | 0 | 1 | D070050 | EARTHQUAKE BRACKET BOTTOM | 6061-T6 Al |
| 33 | 4 | 2 | 6 | D070484 | EARTHQUAKE BRACKET SIDE ALTERNATE | 6061-T6 Al |
| 32 | 16 | 4 | 20 | -- | FLANGE NUT, 1/4-20 | 300 SSSL |
| 31 | 16 | 4 | 20 | D060544 | EARTHQUAKE STOP ASSEMBLY | -- |
| 30 | 1 | 0 | 1 | D070049 | EARTHQUAKE BRACKET TOP | 6061-T6 Al |
| 29 | 2 | 0 | 2 | D080163 | OMC CROSSBAR ASSEMBLY | -- |
| 28 | 1 | 0 | 1 | D060488 | OPTICS BENCH ASSEMBLY | -- |
| 27 | 4 | 1 | 5 | D070068 | C SPACER LOCATED BETWEEN GLASS BENCH AND WIRE CLAMP | 304 SSSL |
| 26 | 8 | 2 | 10 | -- | FLAT WASHER, #2 (NAS 620-C2 OR EQUIVALENT) | 300 SSSL |
| 25 | 8 | 2 | 10 | -- | SCREW, SOCKET HEAD CAP, #2-56 UNC-2A X 0.25 LONG | Ag-PLATED 300 SSSL |
| 24 | 4 | 1 | 5 | D060537 | LOWER WIRE ASSEMBLY | -- |
| 23 | 16 | 1 | 17 | -- | SCREW, SOCKET HEAD CAP, #8-32 UNC-2A X 0.75 LONG | Ag-PLATED 300 SSSL |
| 22 | 1 | 0 | 1 | D060502 | UPPER MASS ASSEMBLY | -- |
| 21 | 24 | 6 | 30 | -- | SCREW, SOCKET HEAD CAP, #4-40 UNC-2A X 1 LONG | Ag-PLATED 300 SSSL |
| 20 | 6 | 2 | 8 | D060218 | OSEM ASSEMBLY | -- |
| 19 | 12 | 3 | 15 | -- | FLANGE NUT, #8-32 | 300 SSSL |
| 18 | 1 | 0 | 1 | D060530 | COIL HOLDER, OMC (TABLE CLOTH) | 304 SSSL |
| 17 | 16 | 4 | 20 | -- | SCREW, SOCKET HEAD CAP, #8-32 UNC-2A X 0.5 LONG | Ag-PLATED SSSL |
| 16 | 16 | 4 | 20 | -- | SCREW, SOCKET HEAD CAP, #8-32 UNC-2A X 0.625 LONG | 300 SSSL |
| 15 | 2 | 0 | 2 | D060533-2 | MOUNTING BRACKET ASSEMBLY, COIL HOLDER | -- |
| 14 | 2 | 0 | 2 | D060533-1 | MOUNTING BRACKET ASSEMBLY, COIL HOLDER | -- |
| 13 | 28 | 6 | 34 | -- | FLAT WASHER, #4 (NAS 620-C4L OR EQUIVALENT) | 300 SSSL |
| 12 | 4 | 1 | 5 | -- | SCREW, SOCKET HEAD CAP, #4-40 UNC-2A X 0.25 LONG | Ag-PLATED 300 SSSL |
| 11 | 2 | 1 | 3 | D060536 | UPPER WIRE ASSEMBLY | -- |
| 10 | 8 | 2 | 10 | -- | SCREW, SOCKET HEAD CAP, #8-32 UNC-2A X 0.375 LONG | 300 SSSL |
| 9 | 2 | 0 | 2 | D030451 | ROTATIONAL ADJUSTER ASSEMBLY | -- |
| 8 | 2 | 0 | 2 | D070028 | BLADE PLATFORM | 6061-T6 Al |
| 7 | 26 | 5 | 31 | -- | FLAT WASHER, 1/4 (NAS 620-C416 OR EQUIVALENT) | 300 SSSL |
| 6 | 26 | 5 | 31 | -- | SCREW, SOCKET HEAD CAP, 1/4-20 UNC-2A X 0.75 LONG | 300 SSSL |
| 5 | 2 | 0 | 2 | D070052 | CONNECTOR BRACKET | 6061-T6 Al |
| 4 | 70 | 14 | 84 | -- | FLAT WASHER, #8 (NAS 620-CB OR EQUIVALENT) | 300 SSSL |
| 3 | 34 | 7 | 41 | -- | SCREW, SOCKET HEAD CAP, #8-32 UNC-2A X 0.5 LONG | 300 SSSL |
| 2 | 2 | 0 | 2 | D070145 | TOP BLADE GUARD ASSEMBLY | -- |
| 1 | 1 | 0 | 1 | D060296 | STRUCTURE WELDMENT | -- |

NOTES: (UNLESS OTHERWISE SPECIFIED)

DIMENSIONS ARE IN INCHES
TOLERANCES:
XX ± 0.01
XXX ± 0.005
ANGULAR ± 0.5°

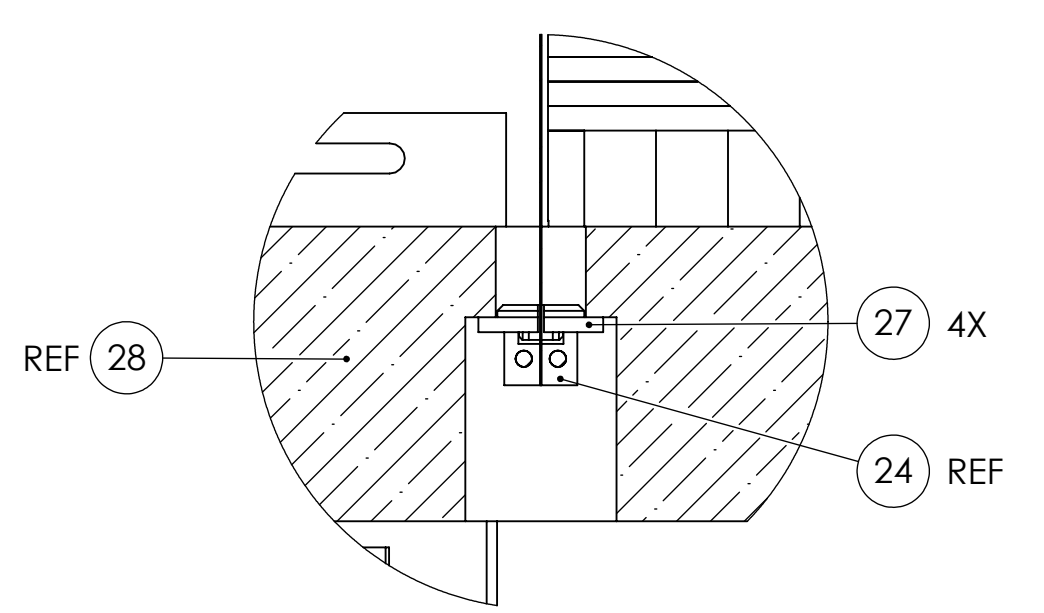
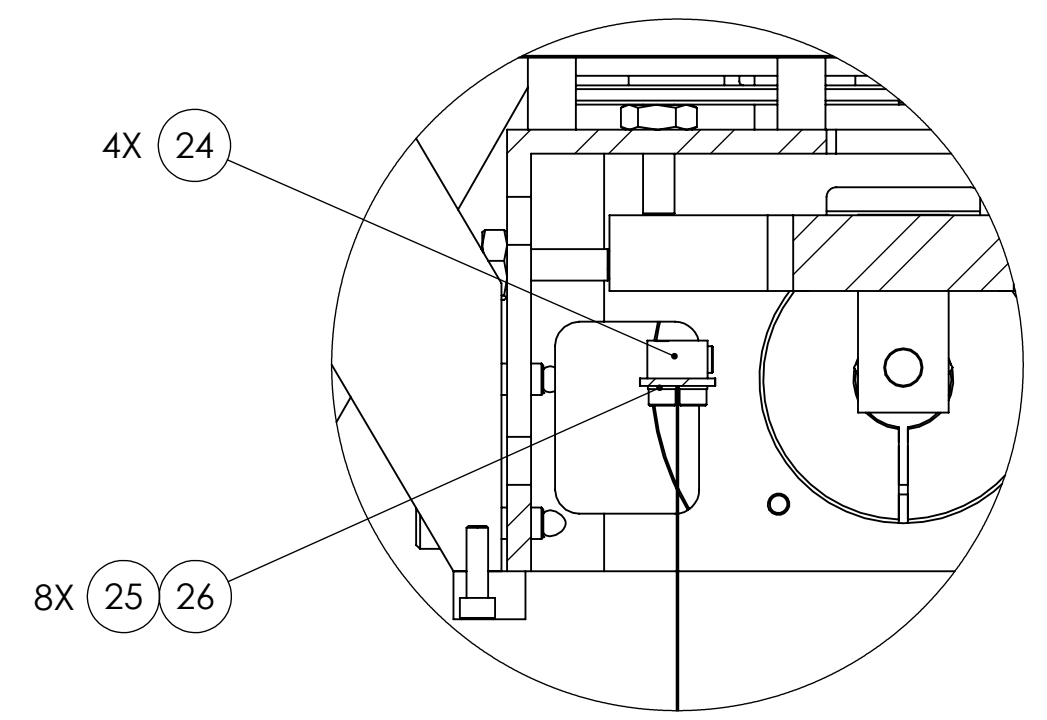
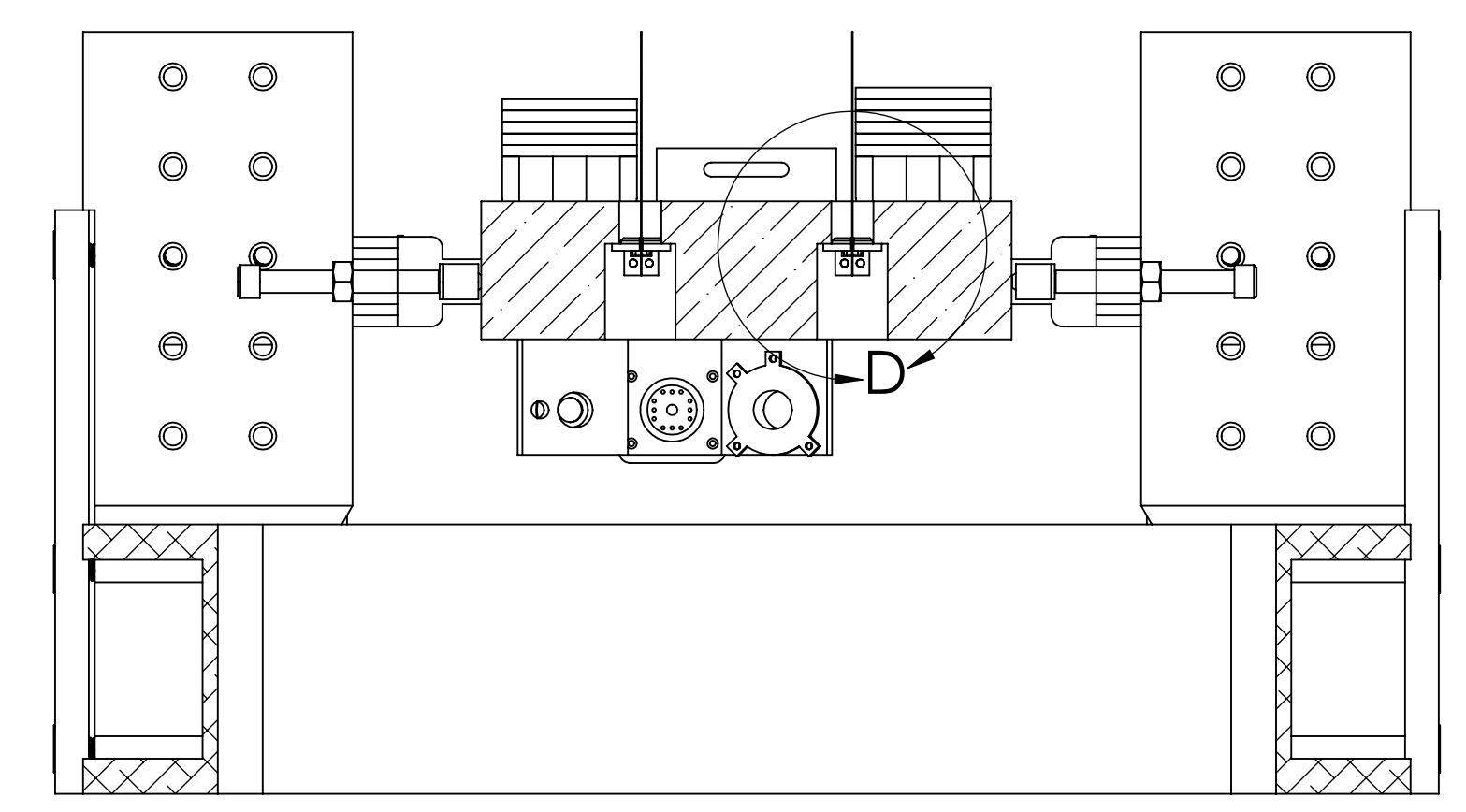
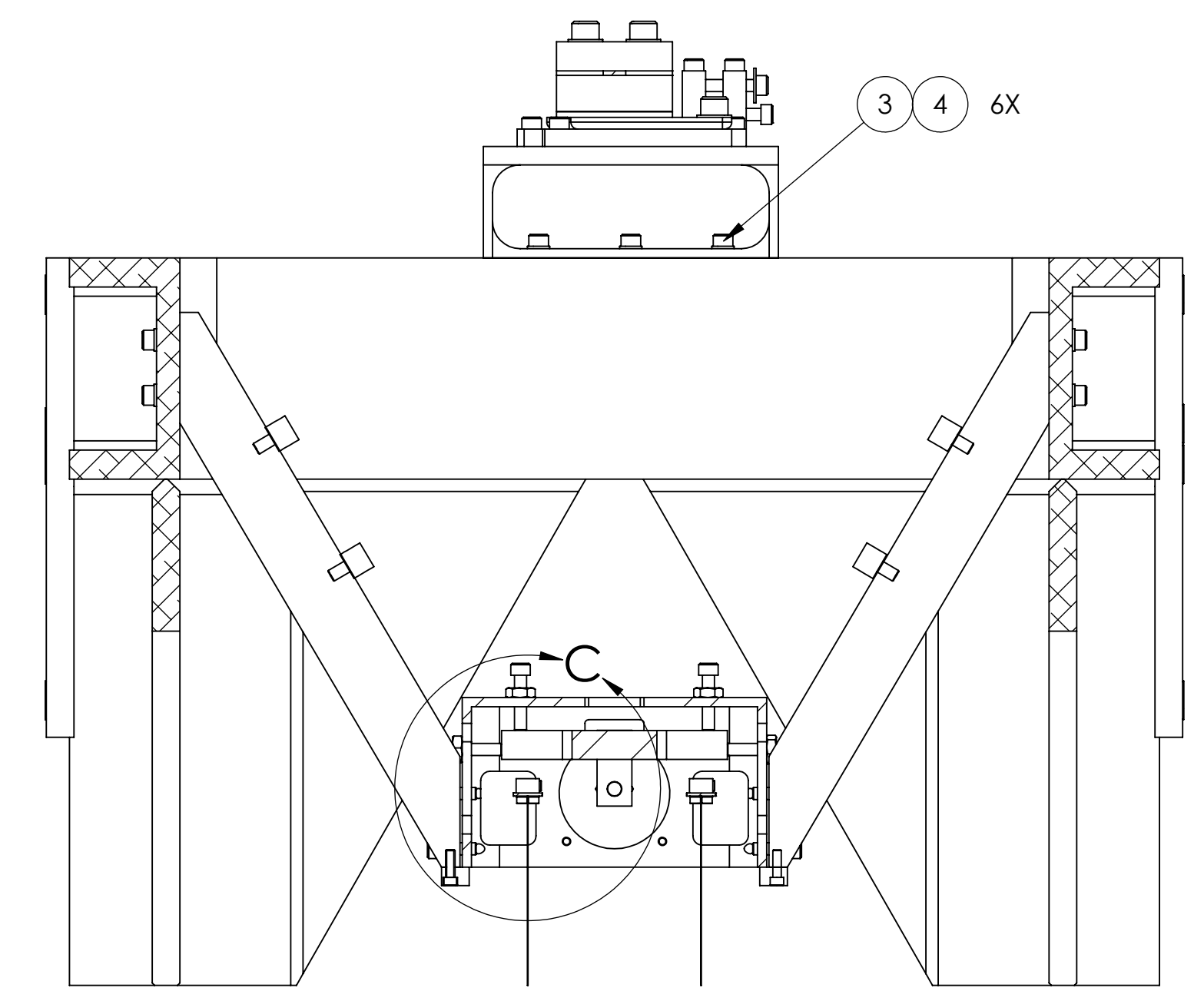
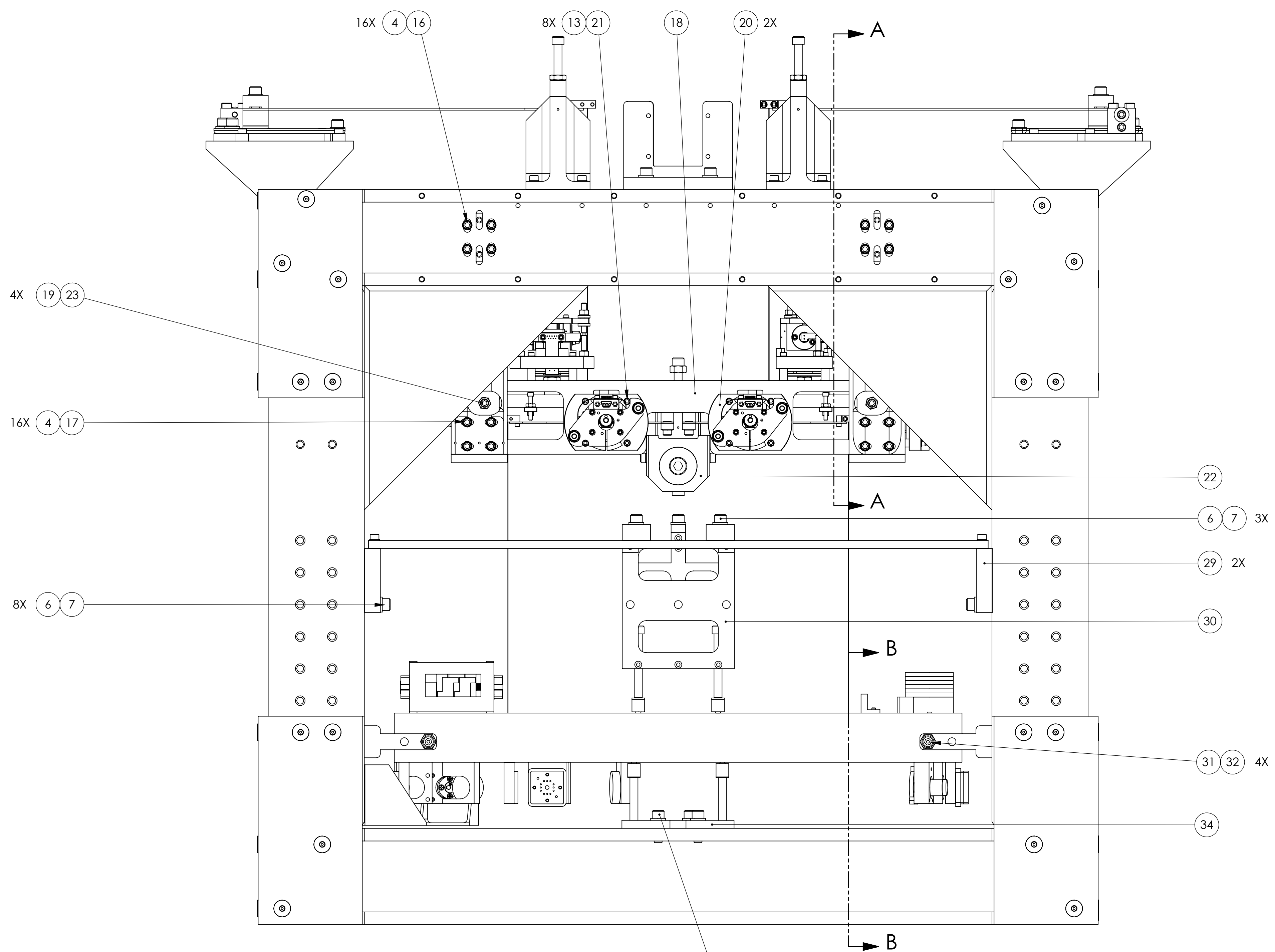
MATERIAL --

FINISH --

LOGO CALIFORNIA INSTITUTE OF TECHNOLOGY
MASSACHUSETTS INSTITUTE OF TECHNOLOGY
IGR, GLASGOW UNIVERSITY GEO 400 GROUP

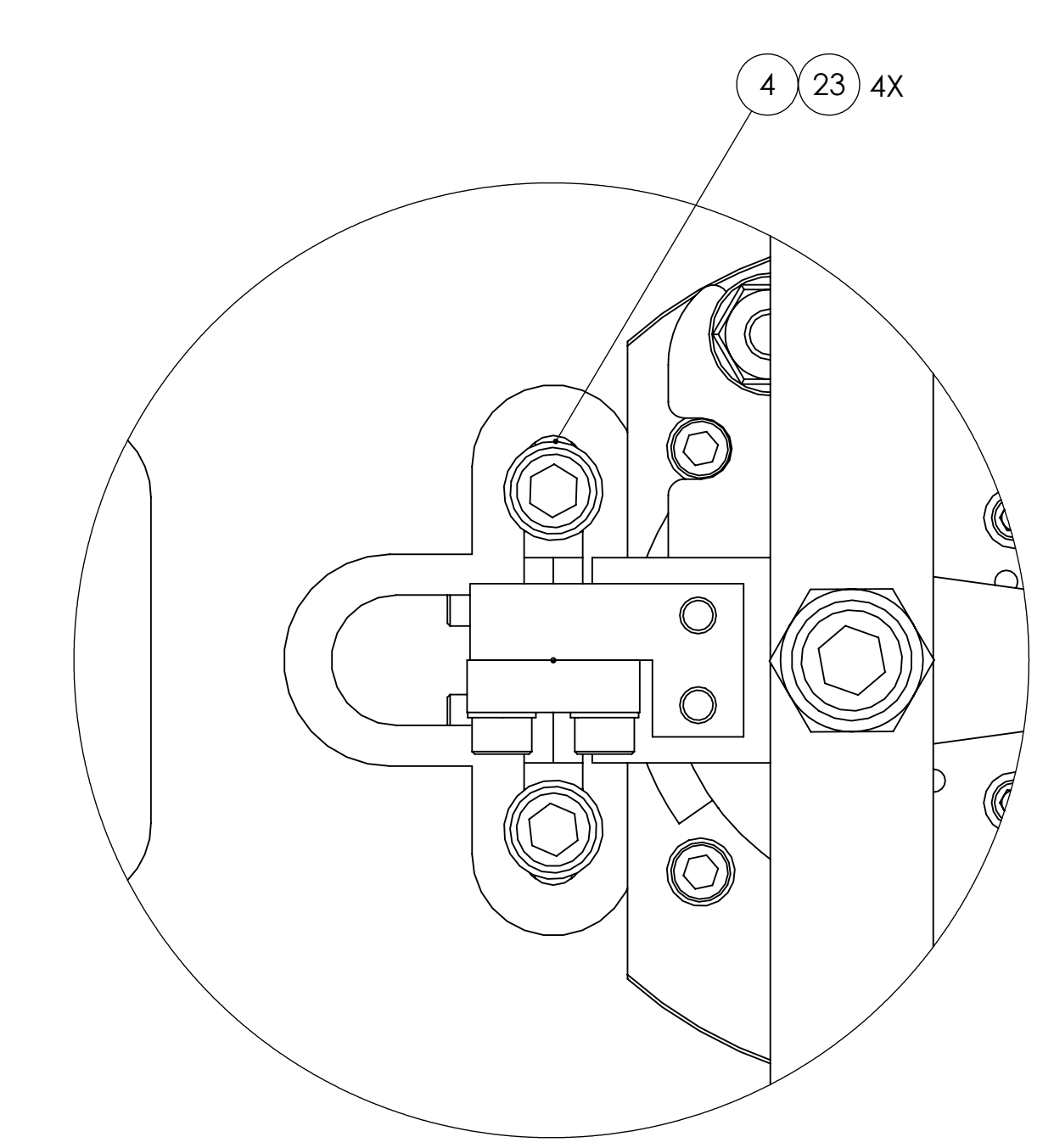
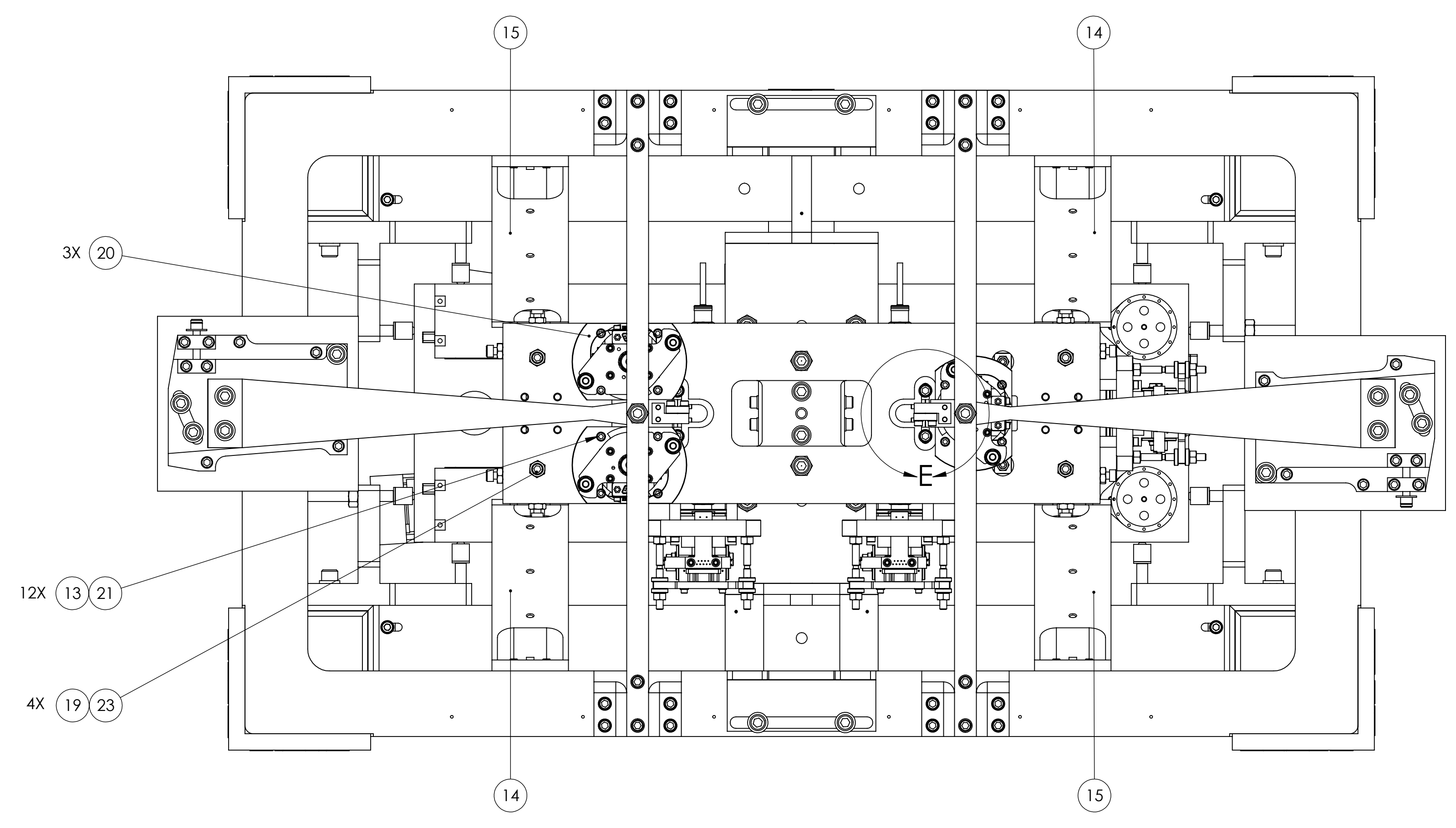
SYSTEM ADVANCED LOGO
SUB-SYSTEM SUS

PART NAME OUTPUT MODE CLEANER (LLO)
DATE --
SIZE DWG. NO. D060306
SCALE 1:2
PROJECTION --
REV. A
SHEET 1 OF 4


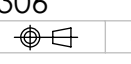


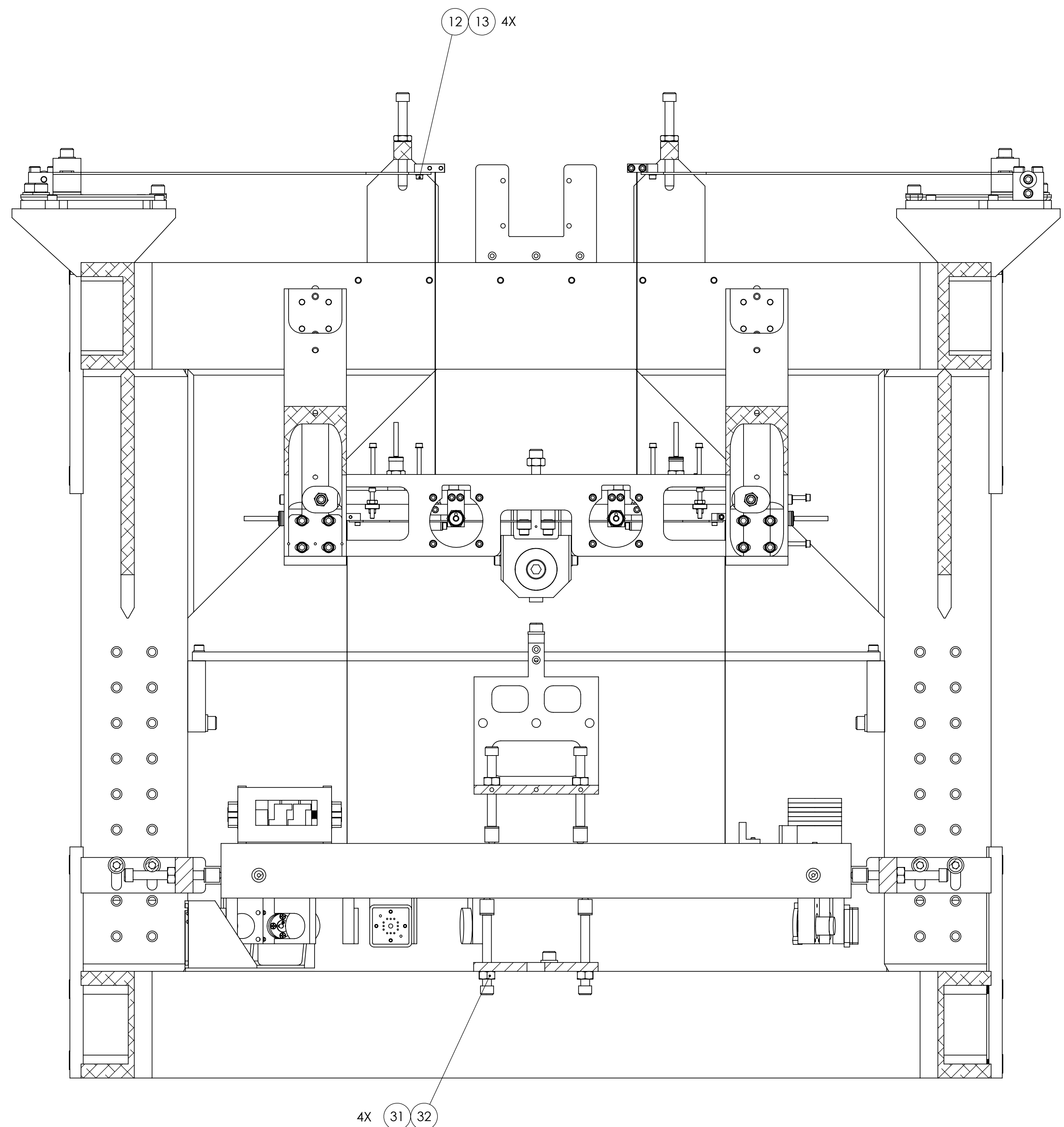
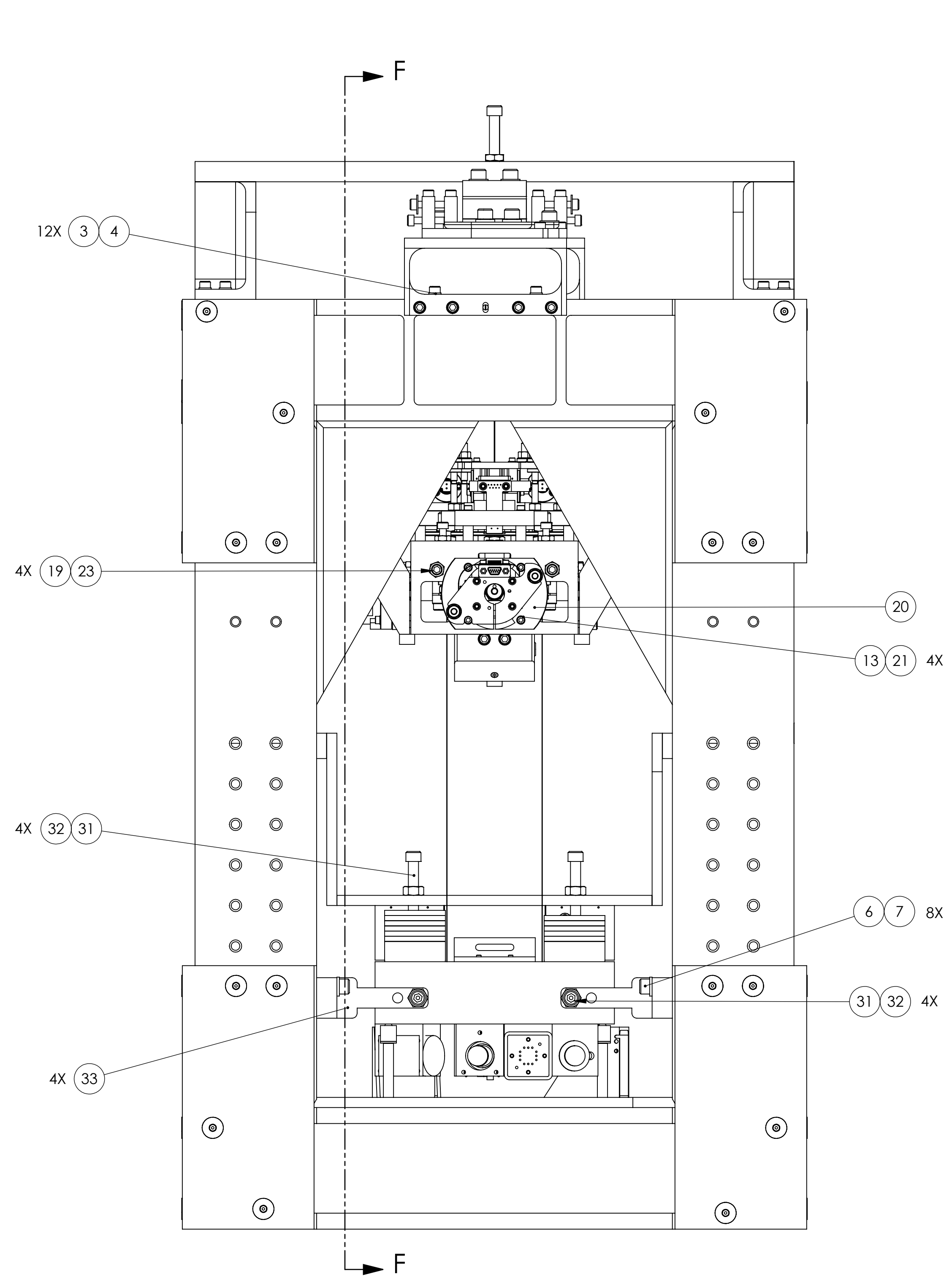
| NOTES: (UNLESS OTHERWISE SPECIFIED) | | PARTS LIST | |
|-------------------------------------|--|---|--|
| DIMENSIONS ARE IN INCHES | | LIGO CALIFORNIA INSTITUTE OF TECHNOLOGY MASSACHUSETTS INSTITUTE OF TECHNOLOGY IGR, GLASGOW UNIVERSITY GEO 400 GROUP | |
| TOLERANCES: | | SYSTEM ADVANCED LIGO | |
| .XX ± 0.01 | | SUB-SYSTEM SUS | |
| .XXX ± 0.005 | | NEXT ASSY | |
| ANGULAR ± 0.5 ° | | PART NAME OUTPUT MODE CLEANER (LLO) | |
| MATERIAL | | SITE DWG. NO. D060306 | |
| FINISH | | SCALE: 1/8 | |
| DRAWN | | PROJECTION: | |
| CHECKED: D. BRIDGES | | SHEET 2 OF 4 | |
| APPROVED: | | REV. A | |

| REV. | DATE | DCN # | DRAWING TREE # |
|------|------------|--------------|----------------|
| A | 7 MAY 2008 | E080186-00-D | |
| | | | |
| | | | |


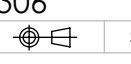


DETAIL E
SCALE 2 : 1

| NOTES: (UNLESS OTHERWISE SPECIFIED) | | PARTS LIST | |
|-------------------------------------|------------|--|------|
| DIMENSIONS ARE IN INCHES | |  CALIFORNIA INSTITUTE OF TECHNOLOGY MASSACHUSETTS INSTITUTE OF TECHNOLOGY IGR, GLASGOW UNIVERSITY GEO 400 GROUP | |
| TOLERANCES: | | SYSTEM ADVANCED LIGO | |
| .XX ± 0.01 | | SUB-SYSTEM SUS | |
| .XXX ± 0.005 | | NEXT ASSY | |
| ANGULAR ± 0.5 ° | | PART NAME OUTPUT MODE CLEANER (LLO) | |
| MATERIAL -- | | SITE DWG. NO. D060306 | |
| FINISH -- | | SCALE: 1:2 | |
| -- μ inch | | PROJECTION:  | |
| DRAWN | NAME | DATE | REV. |
| CHECKED | M. METER | | A |
| APPROVED | D. BRIDGES | | |



SECTION F-F
SCALE 1 : 2

| NOTES: (UNLESS OTHERWISE SPECIFIED) | | PARTS LIST | |
|-------------------------------------|--|--|--|
| DIMENSIONS ARE IN INCHES | |  CALIFORNIA INSTITUTE OF TECHNOLOGY MASSACHUSETTS INSTITUTE OF TECHNOLOGY IGR, GLASGOW UNIVERSITY GEO 400 GROUP | |
| TOLERANCES: | | SYSTEM ADVANCED LIGO | |
| .XX ± 0.01 | | SUB-SYSTEM SUS | |
| .XXX ± 0.005 | | NEXT ASSY | |
| ANGULAR ± 0.5 ° | | PART NAME | |
| MATERIAL | | OUTPUT MODE CLEANER (LLO) | |
| FINISH | | DATE | |
| | | M. MEYER | |
| DRAWN | | SITE | |
| D. BRIDGES | | D060306 | |
| CHECKED | | SCALE: 1:2 | |
| APPROVED | | PROJECTION:  | |
| | | SHEET 4 OF 4 | |