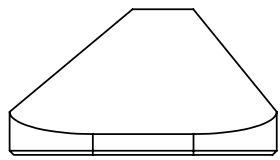
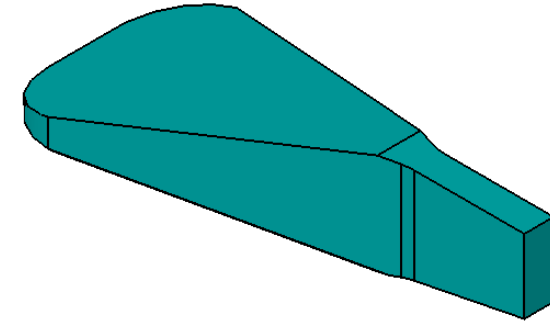
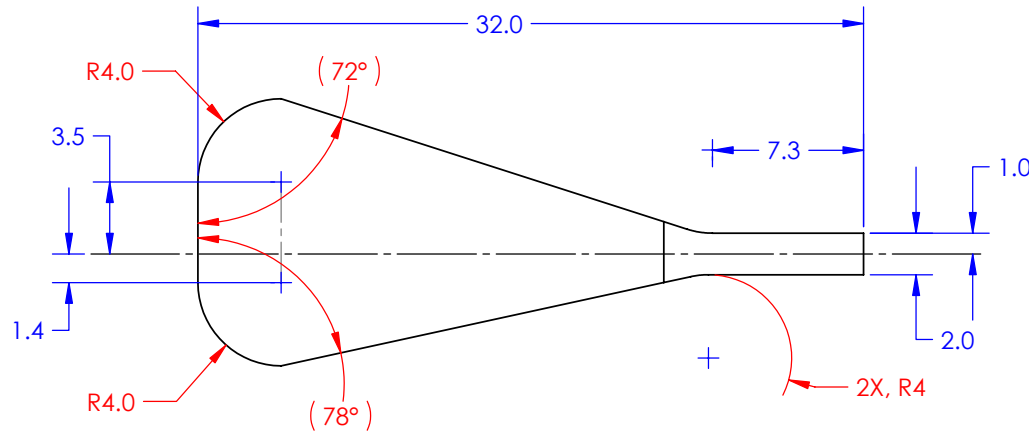
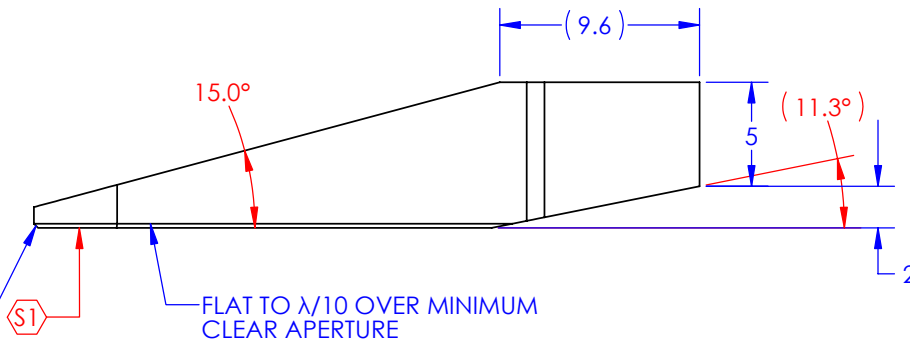


| REV. | DATE  | DCN #                                                                                                                 | DRAWING TREE # |
|------|-------|-----------------------------------------------------------------------------------------------------------------------|----------------|
| 00   | 02/06 | INITIAL RELEASE (C.CANTLEY)                                                                                           |                |
| 01   | 03/06 | CHANGE TO CHAMFER ON ALL EDGES OF FLAT (R0.2 FROM R0.5) ADDED RADIUS (R2) TO JUNCTIONS BETWEEN HORN AND ANGLED SIDES. |                |
| 02   | 03/06 | RADIUS TO JUNCTIONS BETWEEN HORN AND ANGLED SIDES INCREASED FROM R2 TO R4.                                            |                |

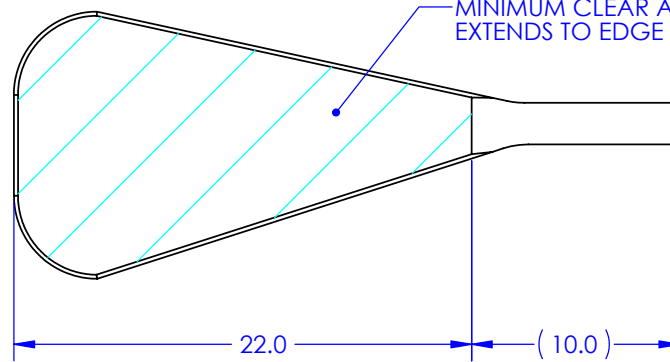
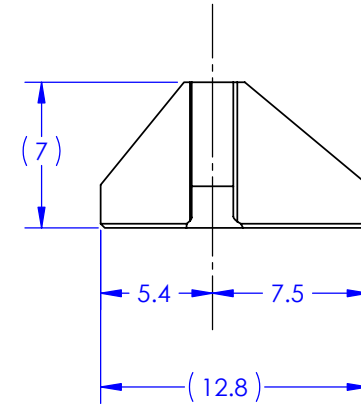


POLISHED CHAMFER 0.2 X 45° (±5°)  
ON ALL EDGES ADJACENT TO  
SURFACE 'S1' (SEE NOTE 3)



FLAT TO λ/10 OVER MINIMUM  
CLEAR APERTURE

MINIMUM CLEAR APERTURE  
EXTENDS TO EDGE OF SURFACE (S1)



| PARTS LIST                                                          |                   |                                                                                                                                                                                                            |
|---------------------------------------------------------------------|-------------------|------------------------------------------------------------------------------------------------------------------------------------------------------------------------------------------------------------|
| NOTES: (UNLESS OTHERWISE SPECIFIED)                                 |                   |                                                                                                                                                                                                            |
| 1. DO NOT SCALE FROM DRAWING.                                       |                   |                                                                                                                                                                                                            |
| 2. TOTAL BOND AREA = 1.77cm <sup>2</sup> (CALCULATED BY SOLIDWORKS) |                   |                                                                                                                                                                                                            |
| 3. EDGE CHIPPING TO BE MINIMISED                                    |                   |                                                                                                                                                                                                            |
| DIMENSIONS ARE IN MILLIMETERS                                       |                   |  CALIFORNIA INSTITUTE OF TECHNOLOGY<br>MASSACHUSETTS INSTITUTE OF TECHNOLOGY<br>IGR, GLASGOW UNIVERSITY GEO 600 GROUP |
| ALL TOLERANCES:<br>± 0.1mm MAX.                                     |                   |                                                                                                                                                                                                            |
| ANGULAR ± 0.2 °                                                     |                   | SYSTEM<br>ADVANCED LIGO                                                                                                                                                                                    |
| MATERIAL<br>SUPRASIL 312                                            |                   | SUB-SYSTEM<br>SUS                                                                                                                                                                                          |
| FINISH<br>INSPECTION POLISH                                         |                   | NEXT ASSY<br>N-Ptype                                                                                                                                                                                       |
| PART NAME<br>Refined Ear (Type B)                                   |                   |                                                                                                                                                                                                            |
| DRAWN<br>R.JONES                                                    | DATE<br>01MARCH06 | SIZE<br>B                                                                                                                                                                                                  |
| CHECKED<br>M.P.LLOYD                                                | DATE<br>01MARCH06 | DWG. NO.<br>D060056                                                                                                                                                                                        |
| APPROVED<br>C.CANTLEY                                               | DATE<br>01MARCH06 | REV.<br>02                                                                                                                                                                                                 |
| SCALE: 2:1                                                          |                   | PROJECTION:                                                                                                           |
| SHEET 1 OF 1                                                        |                   |                                                                                                                                                                                                            |