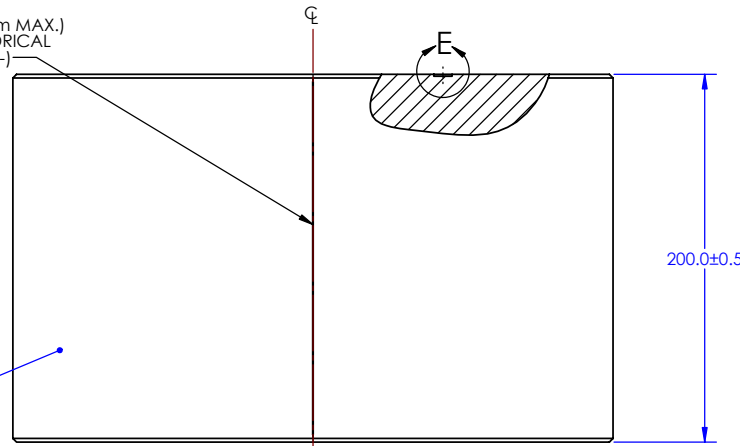
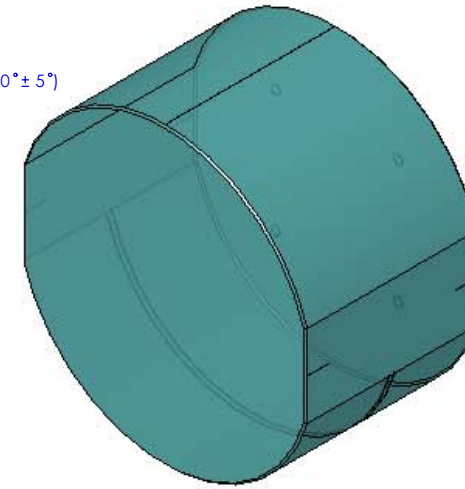
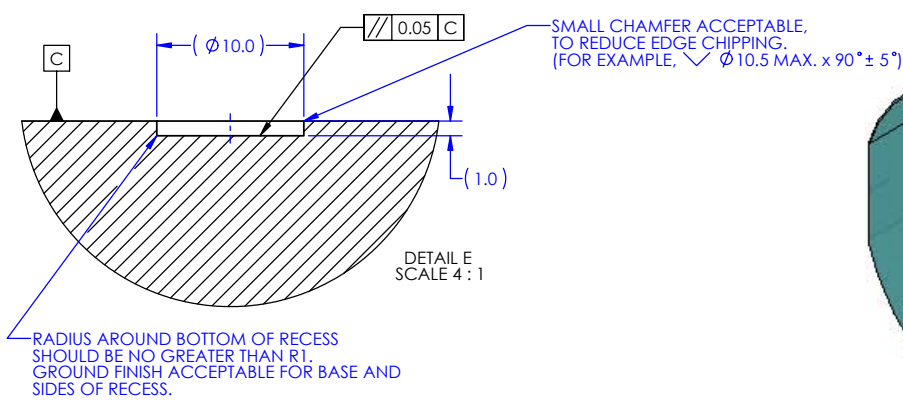


ETCH, GRIND OR SANDBLAST
LEGIBLE REFERENCE GROOVE
(GROOVE WIDTH 0.25mm MIN, 0.5mm MAX.)
ALONG ϕ , PARALLEL TO THE CYLINDRICAL
AXIS (DEFINED BY DATUM FEATURE -A-)



INSPECTION POLISH
(SEE NOTE 2)

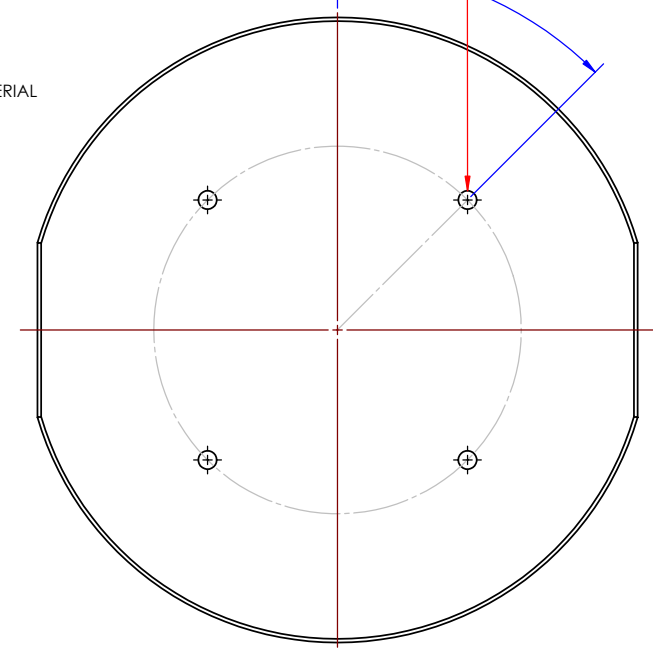
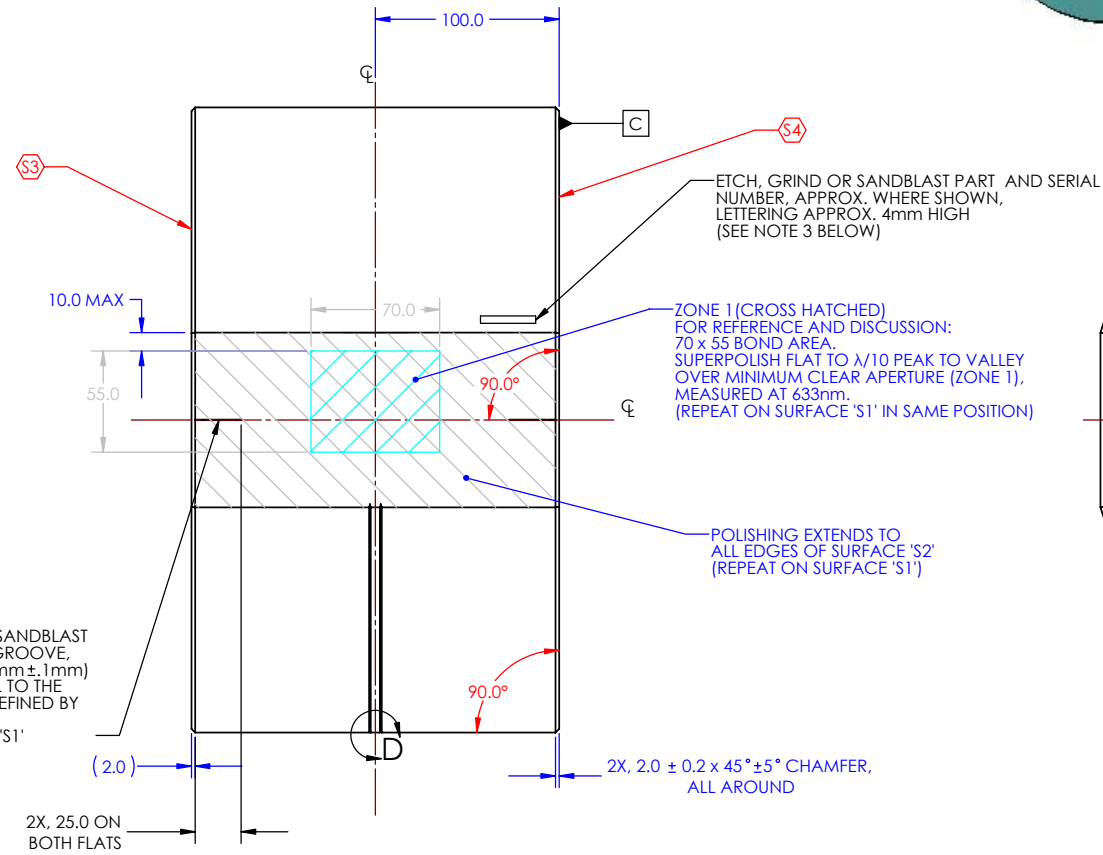
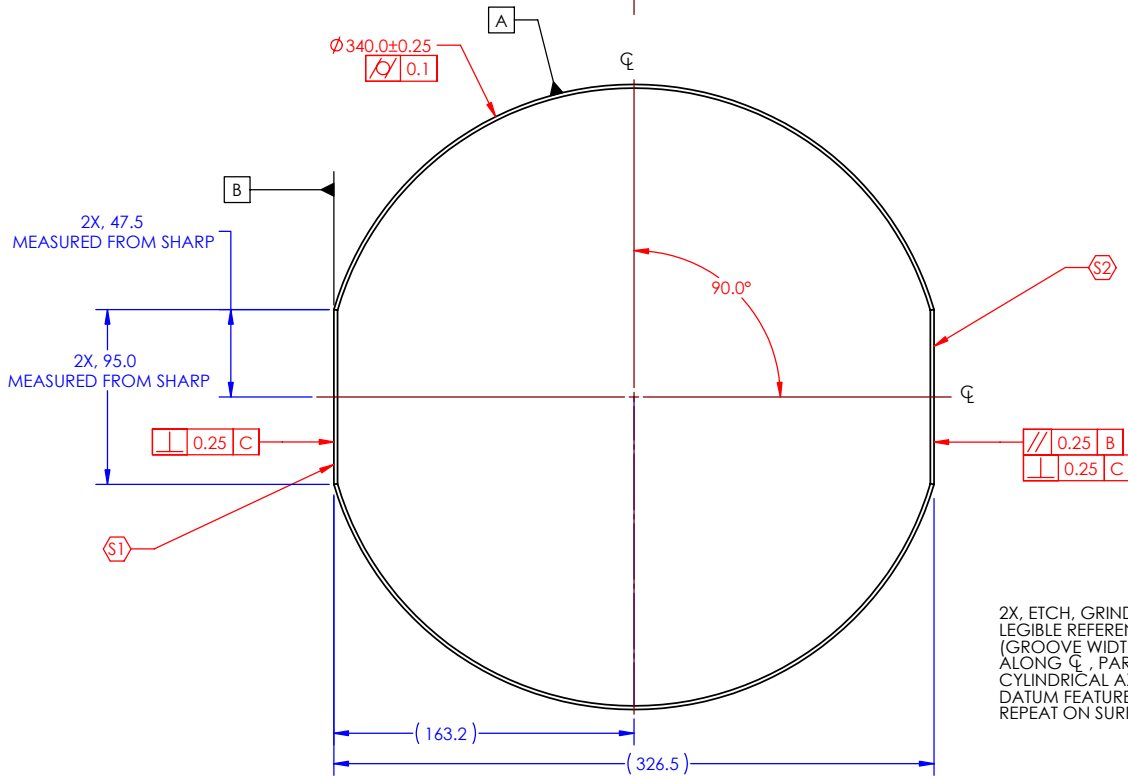


REV	DATE	DCN #	DRAWING TREE #
A	01/2008	ED60235	

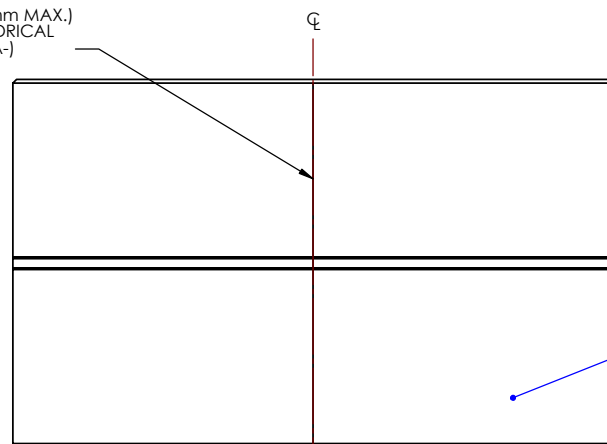
PREVIOUS REVISION NOTES:

- 00 11/05 - LIMITED RELEASE FOR INITIAL FEEDBACK (CAC)
- 01 11/05 - CHANGES FOLLOWING FEEDBACK FROM JHR & IW.
- 03 06/06 - REFERENCE DIMPLES (TO LOCATE BONDING TEMPLATE) REMOVED (DETAIL 'E'). REFERENCE LINE REMOVED FROM FRONT FACE OF MASS (R.JONES)
- 04 07/06 - REMOVAL OF SHIELDED MAGNET RECESSES. AMMENDMENTS REFERENCE MARK SPECS. AND POLISHING SPEC. (R.JONES)
- 05 08/06 - AMMENDMENTS TO TOLERANCES, REFERENCE MARK SPECS. AND POLISHING SPEC. MATERIAL CONFIRMED AS LITHOSIL QT. FOLLOWING MEETING OF 23/08/06 (R.JONES)

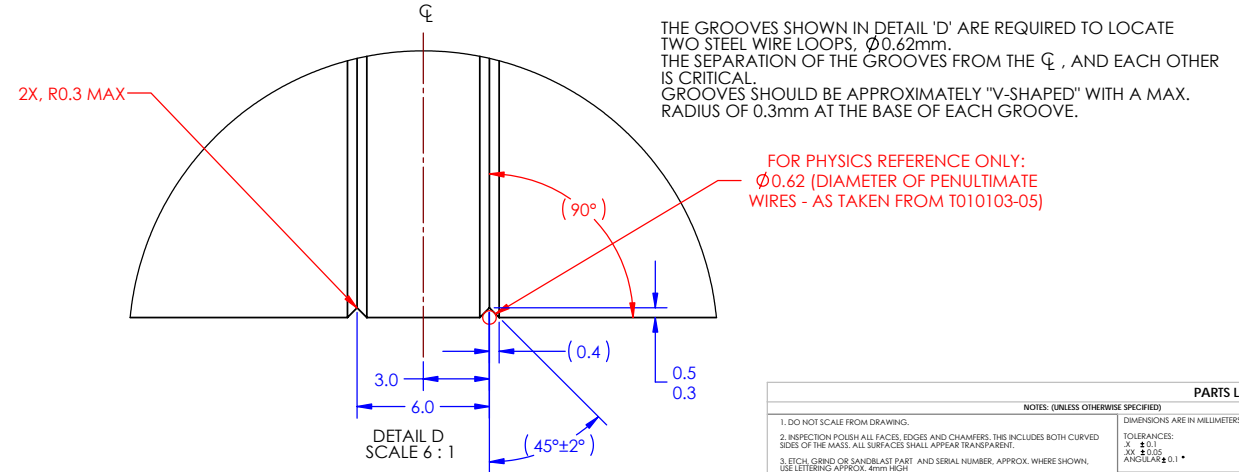
4X, $\phi 10.0 \nabla 1.0$
EQUALLY SPACED ON A 200PCD.
EDGE CHIPPING TO BE MINIMISED.
(SEE ALSO DETAIL 'E' ABOVE)



ETCH, GRIND OR SANDBLAST
LEGIBLE REFERENCE GROOVE
(GROOVE WIDTH: 0.25mm MIN, 0.5mm MAX.)
ALONG ϕ , PARALLEL TO THE CYLINDRICAL
AXIS (DEFINED BY DATUM FEATURE -A-)



INSPECTION POLISH
(SEE NOTE 2)



PARTS LIST		NOTES: (UNLESS OTHERWISE SPECIFIED)	
1.	DO NOT SCALE FROM DRAWING.	DIMENSIONS ARE IN MILLIMETERS	
2.	INSPECTION POLISH ALL FACES, EDGES AND CHAMFERS. THIS INCLUDES BOTH CURVED AND FLAT SURFACES. ALL SURFACES SHALL APPEAR TRANSPARENT.	TOLERANCES: X ± 0.1 XX ± 0.05 ANGLES ± 0.1°	
3.	ETCH, GRIND OR SANDBLAST PART AND SERIAL NUMBER, APPROX. WHERE SHOWN, USE LETTERING APPROX. 4mm HIGH		
4.	SERIAL NUMBERS START AT '001' FOR THE FIRST PART, AND PROCEED CONSECUTIVELY (EXAMPLE: D050421-001)		
5.	MATERIAL TO BE SUPPLIED WITH CERTIFICATE OF CONFORMITY		
6.	A = 633nm FOR SURFACE MEASUREMENTS		

DRAWN	DATE	REV
D		A

SYSTEM	SUB-SYSTEM	PART NAME
ADVANCED LIGO	SUS	N-Ptype ETM QUAD
		PENULTIMATE MASS

SCALE	PROJECTION	SHEET 1 OF 1
SCALE: 1:2	PROJECTION: 1st	