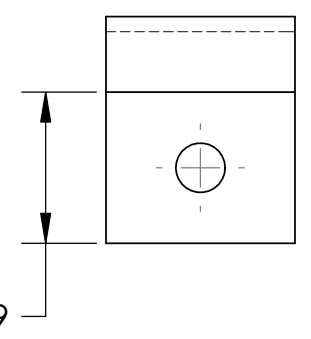
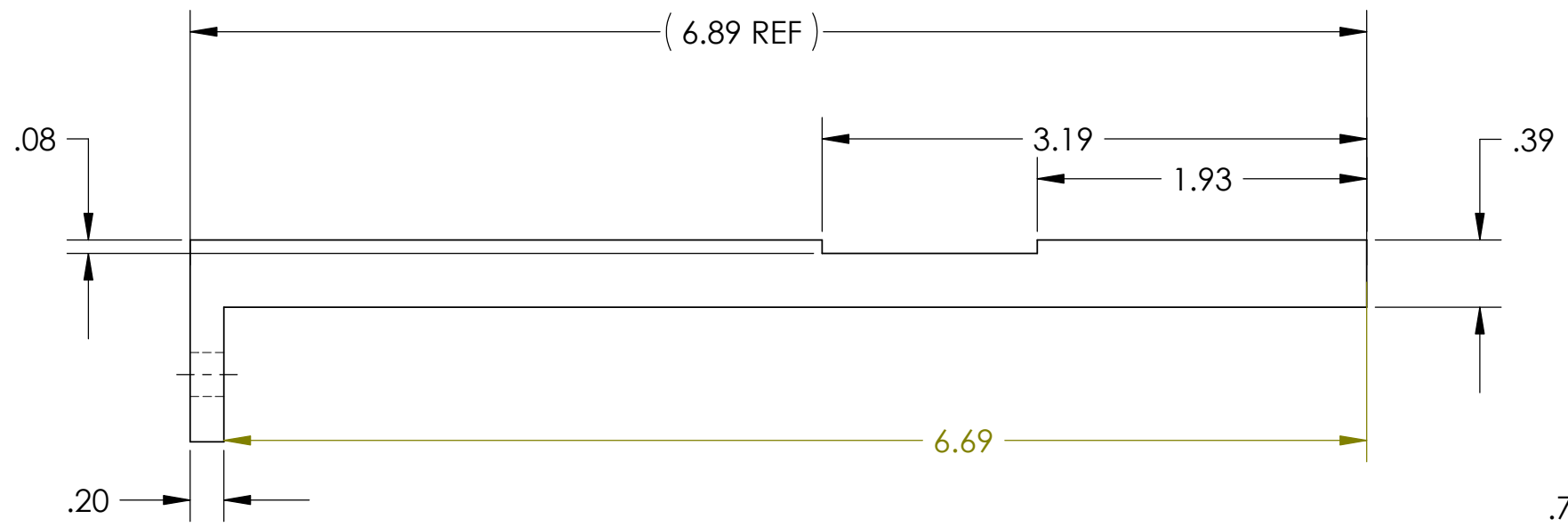
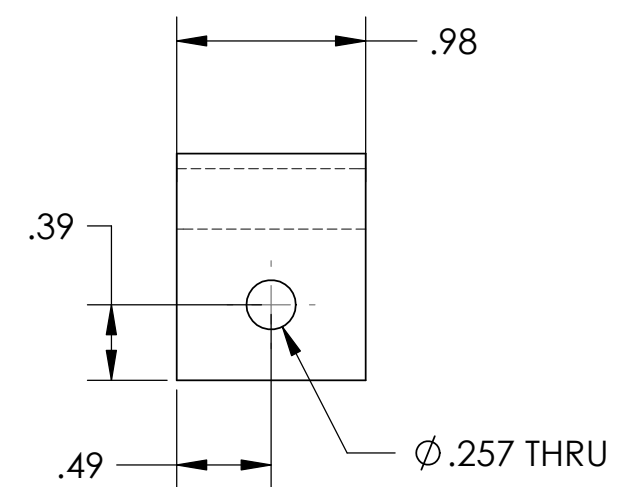
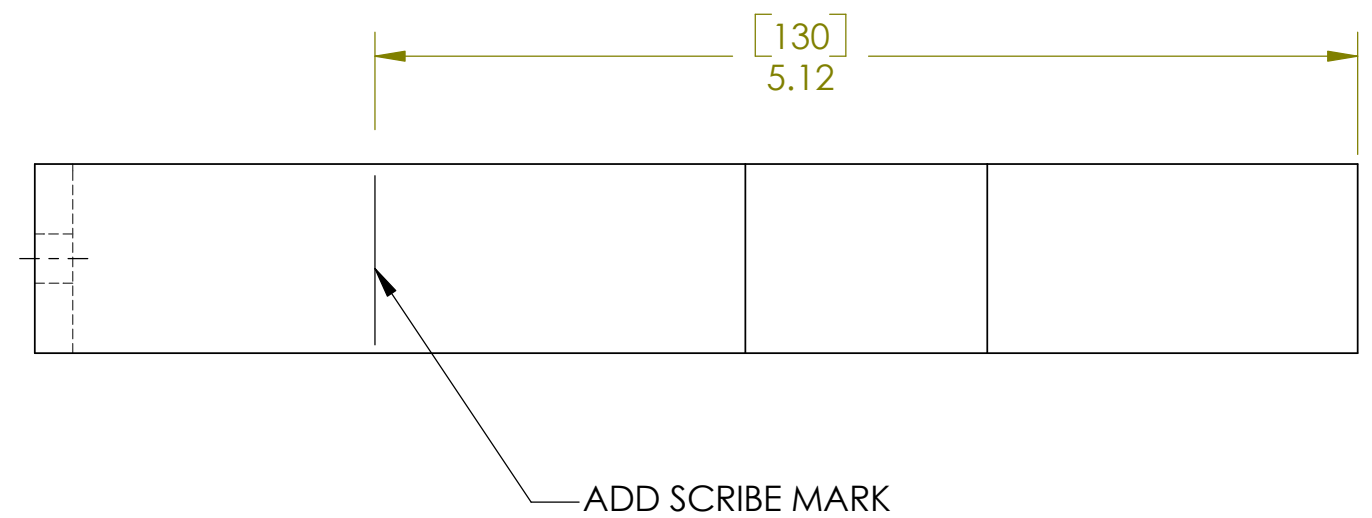
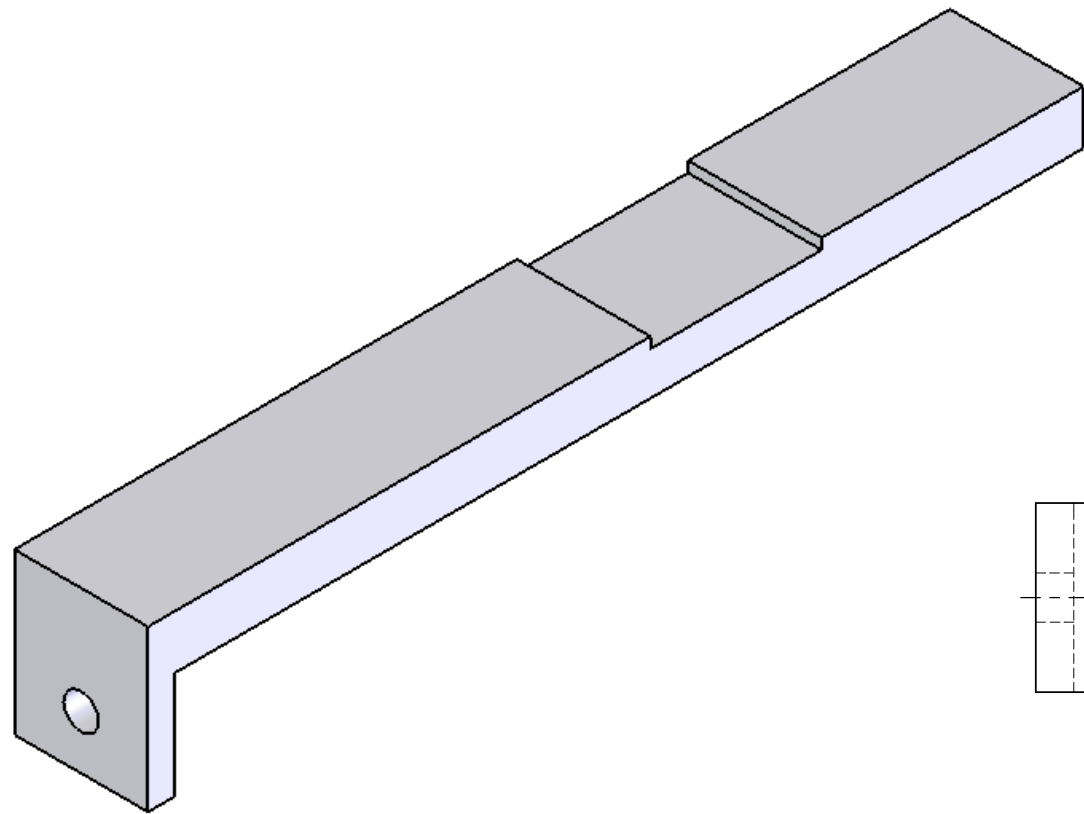


REV.	DATE	DCN #	DRAWING TREE #



NOTES: (UNLESS OTHERWISE SPECIFIED)

- DO NOT SCALE FROM DRAWING.
- REMOVE ALL SHARP EDGES, R.02 MIN.
- ALL MACHINING FLUIDS SHALL BE WATER SOLUBLE AND FREE OF SULFUR, CHLORINE AND SILICONE.
- SCRIBE, ENGRAVE OR MECHANICALLY STAMP DRAWING (NO INKS OR DYES) PART NUMBER, REVISION ON NOTED SURFACE OF PART FOLLOWED ON THE NEXT LINE WITH A THREE DIGIT SERIAL NUMBER. SERIAL NUMBERS START AT 001 FOR THE FIRST ARTICLE AND PROCEED CONSECUTIVELY. USE .12" HIGH CHARACTERS, UNLESS THE SIZE OF THE PART DICTATES SMALL CHARACTERS. A VIBRATORY TOOL MAY BE USED. EXAMPLE:
D050213-A
S/N 001

DIMENSIONS ARE IN INCHES

TOLERANCES:
 .XX ± 0.01
 .XXX ± 0.005

ANGULAR ± 0.5°

MATERIAL
PFA 440HP

FINISH
μ inch

	NAME	DATE
DRAWN	C Torrie	27 APR 2005
DESIGNED	R Jones	12 MAR 2005
CHECKED		
APPROVED		

PARTS LIST

LIGO CALIFORNIA INSTITUTE OF TECHNOLOGY
 MASSACHUSETTS INSTITUTE OF TECHNOLOGY
 IGR, GLASGOW UNIVERSITY GEO 600 GROUP

SYSTEM ADVANCED LIGO

SUB-SYSTEM SUS

NEXT ASSY Catcher/Assembly Rig

PART NAME
PFA 440HP BEARING PAD FOR ASSEMBLY

SIZE DWG. NO. D050213

REV. A

SCALE: NTS PROJECTION: SHEET 1 OF 1