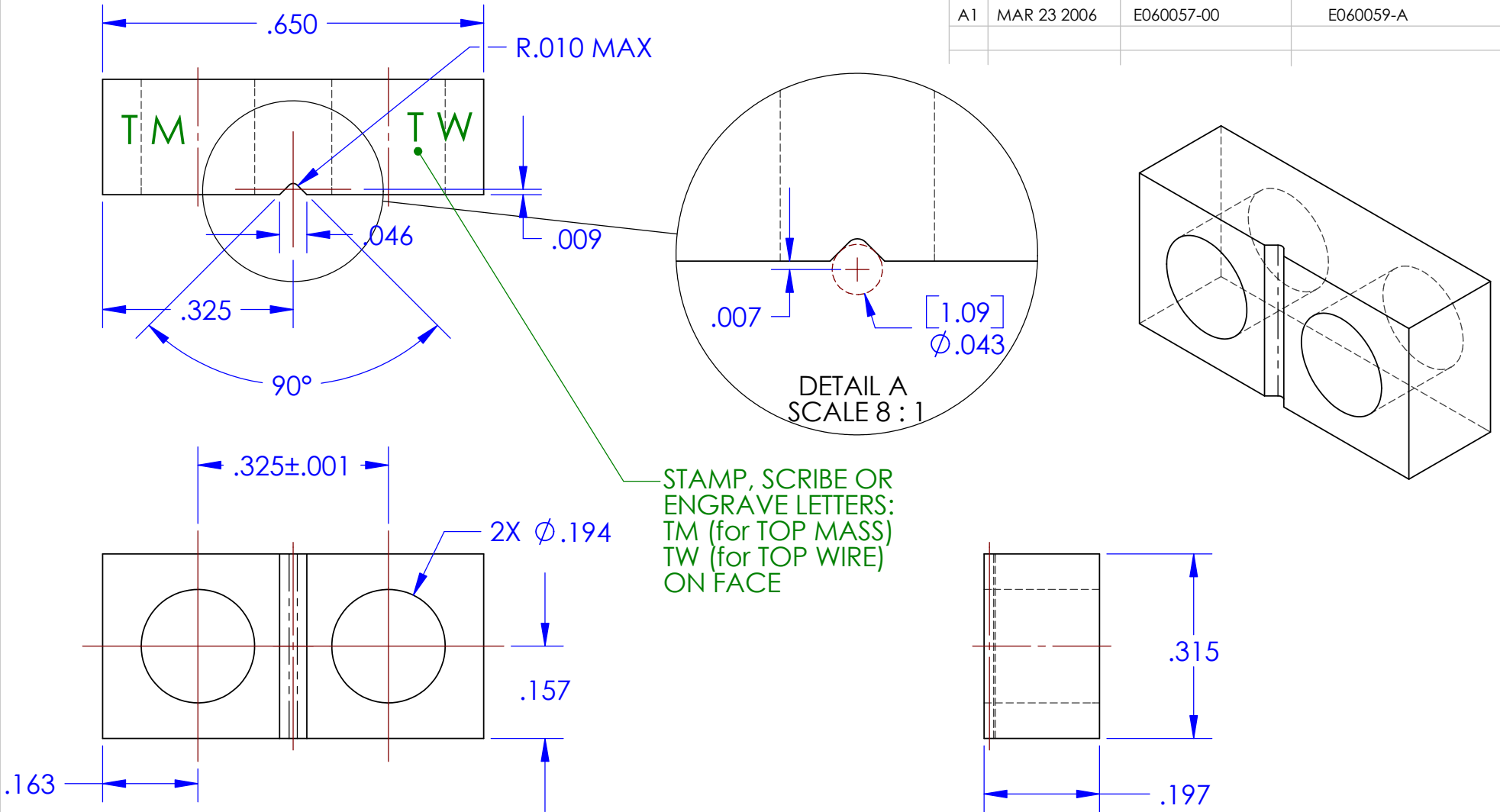


REV.	DATE	DCN #	DRAWING TREE #
A1	MAR 23 2006	E060057-00	E060059-A



STAMP, SCRIBE OR ENGRAVE LETTERS:
 TM (for TOP MASS)
 TW (for TOP WIRE)
 ON FACE

NOTES: (UNLESS OTHERWISE SPECIFIED)

- DO NOT SCALE FROM DRAWING
- REMOVE ALL SHARP EDGES, R.02 MAX.
- ALL MACHINING FLUIDS SHALL BE WATER SOLUBLE AND FREE OF SULFUR, CHLORINE AND SILICONE, SUCH AS CINCINNATI MILACRON'S CIMTECH 410 (STAINLESS STEEL)
- SCRIBE, ENGRAVE OR STAMP DRAWING AND REVISION NUMBER ON NOTED SURFACE OF PART, FOLLOWED BY A THREE DIGIT SERIAL NUMBER. SERIAL NUMBERS START AT SN001 FOR THE FIRST PART AND PROCEED CONSECUTIVELY. USE .07" HIGH CHARACTERS. EXAMPLE:
 — D040123-04 then D040123-04
 — SN001 SN002 etc.
 A VIBRATORY TOOL MAY BE USED.
- BAG AND TAG WITH DRAWING PART NUMBER, REVISION AND QUANTITY. EXAMPLE:
 D040123-04 Quantity 30

DIMENSIONS ARE IN INCHES	
TOLERANCES: .XX ± 0.01 .XXX ± 0.005	
ANGULAR ± 0.5 °	
MATERIAL 303/304 SST	
FINISH 32 μ inch	
DRAWN	M.Perreur-Lloyd 07JUL04
CHECKED	C.Torrie 30SEP04
APPROVED	

LIGO CALIFORNIA INSTITUTE OF TECHNOLOGY
 MASSACHUSETTS INSTITUTE OF TECHNOLOGY
 IGR, GLASGOW UNIVERSITY GEO 600 GROUP

SYSTEM **ADVANCED LIGO**

SUB-SYSTEM **SUS**

NEXT ASSY **C-Ptype ETM TOP MASS**

PART NAME **TOP WIRE BREAK-OFF - MAIN BODY**

SIZE **A** DWG. NO. **D040383** REV. **A1**