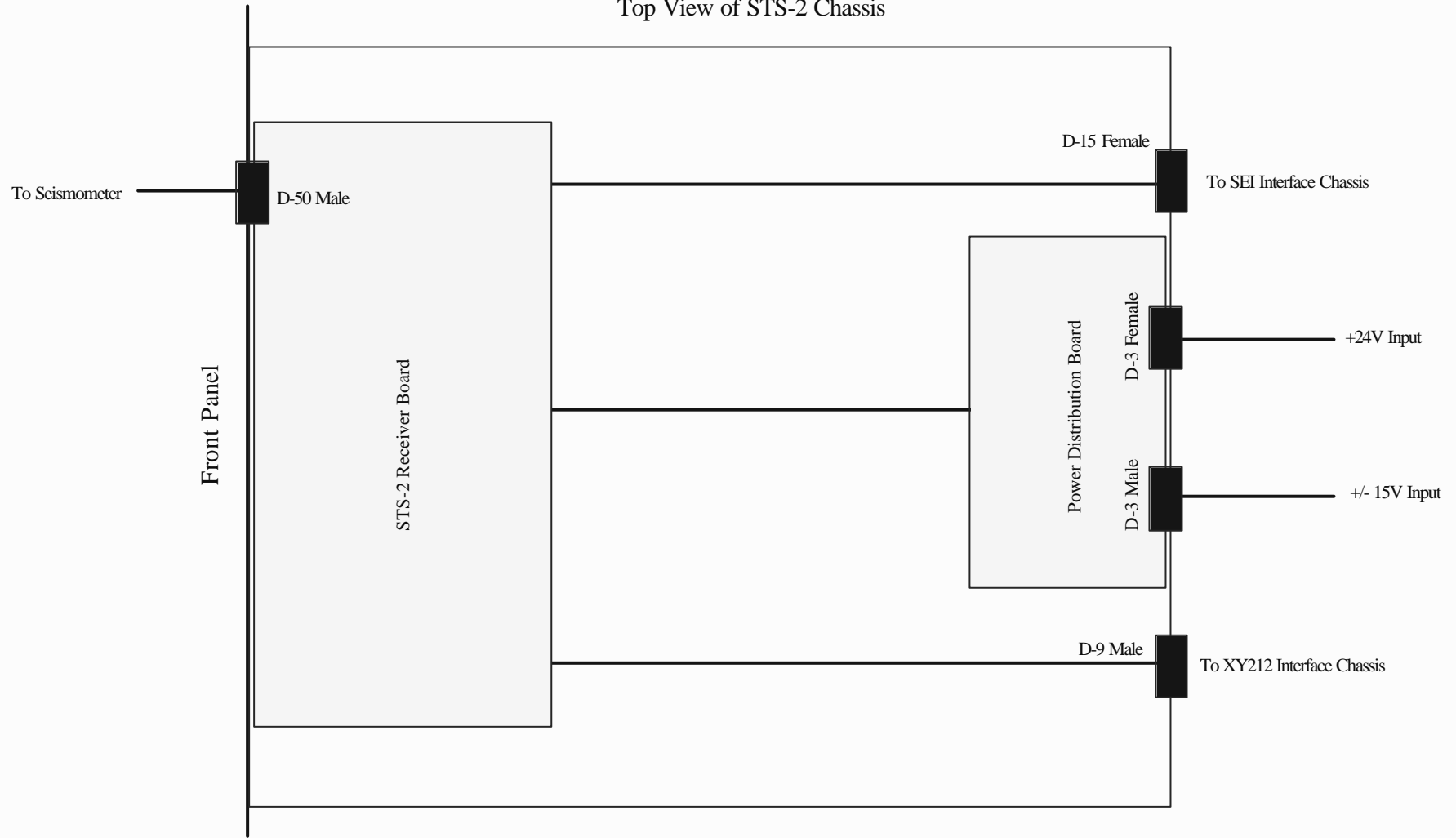

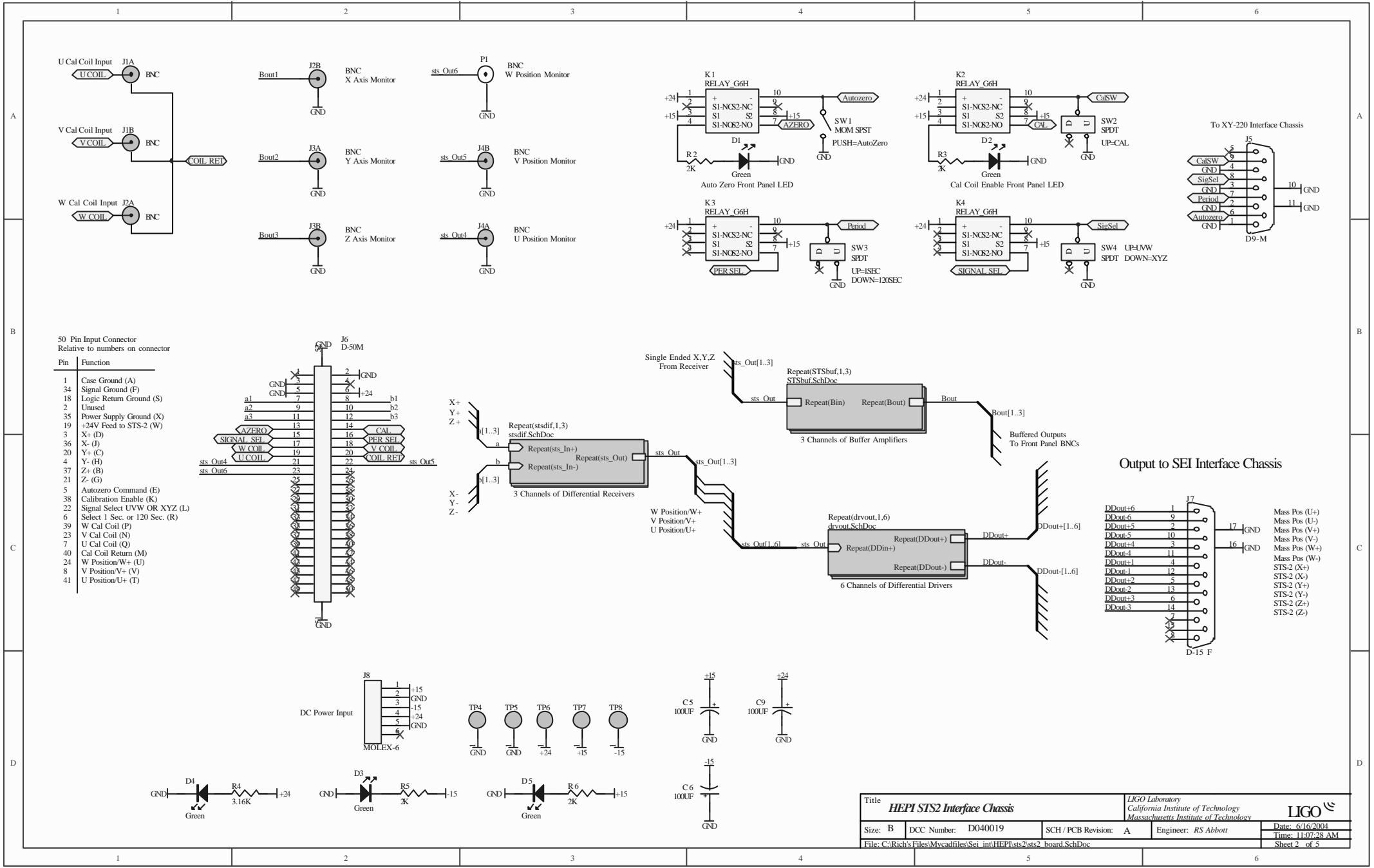


Top View of STS-2 Chassis

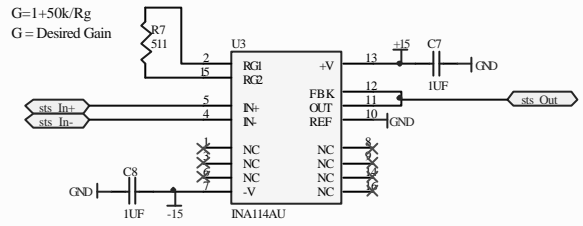


Title		<i>STS-2 Interface Chassis</i>		LIGO Laboratory California Institute of Technology Massachusetts Institute of Technology		LIGO 	
Size: B	DCC Number: D040019	SCH / PCB Revision: A	Engineer: RS Abbott	Date: 6/16/2004	Time: 11:07:28 AM		
File: C:\Rich's Files\Mycadfiles\Sei_int\HEPI\sts2\sts2_chassis.SchDoc				Sheet 1 of 5			



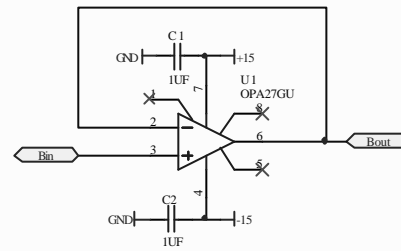
Title HEPI STS2 Interface Chassis		LIGO Laboratory California Institute of Technology Massachusetts Institute of Technology		LIGO	
Size: B	DCC Number: D040019	SCH / PCB Revision: A	Engineer: RS Abbott	Date: 6/16/2004	Time: 11:07:28 AM
File: C:\Rich's Files\Mycadfiles\Sei_int\HEPI\sts2\sts2_board.SchDoc					Sheet 2 of 5


STS-2 X, Y, Z Differential Receiver Details



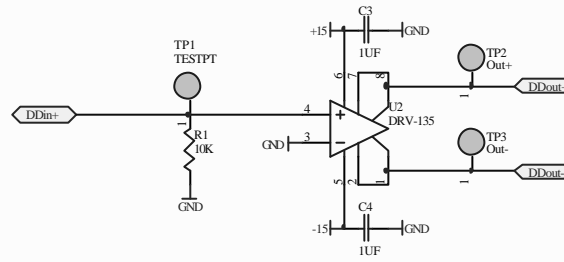
Title STS2 Differential Receiver			LIGO Laboratory California Institute of Technology Massachusetts Institute of Technology		LIGO
Size: B	DCC Number: D040019	SCH / PCB Revision: A	Engineer: RS Abbott	Date: 6/16/2004	Time: 11:07:28 AM
File: C:\Rich's Files\Mvcafiles\Sei_int\HEPI\sts2\stdif.SchDoc					Sheet 3 of 5

STS-2 Buffer Amplifier Details



Title		LIGO Laboratory California Institute of Technology Massachusetts Institute of Technology		LIGO 	
Size: B	DCC Number: D040019	SCH / PCB Revision: A	Engineer: RS Abbott	Date: 6/16/2004	Time: 11:07:28 AM
File: C:\Rich's Files\Mycadfiles\Sei_int\HEPI\sts2\STSbuf.SchDoc					Sheet 4 of 5

STS2 Output Differential Driver Details



Title		LIGO Laboratory California Institute of Technology Massachusetts Institute of Technology		LIGO	
Size: B	DCC Number: D040019	SCH / PCB Revision: A	Engineer: RS Abbott	Date: 6/16/2004	
File: C:\Rich's Files\Mvcafiles\Sei_int\HEPI\sts2\drvout.SchDoc				Time: 11:07:28 AM	Sheet 5 of 5