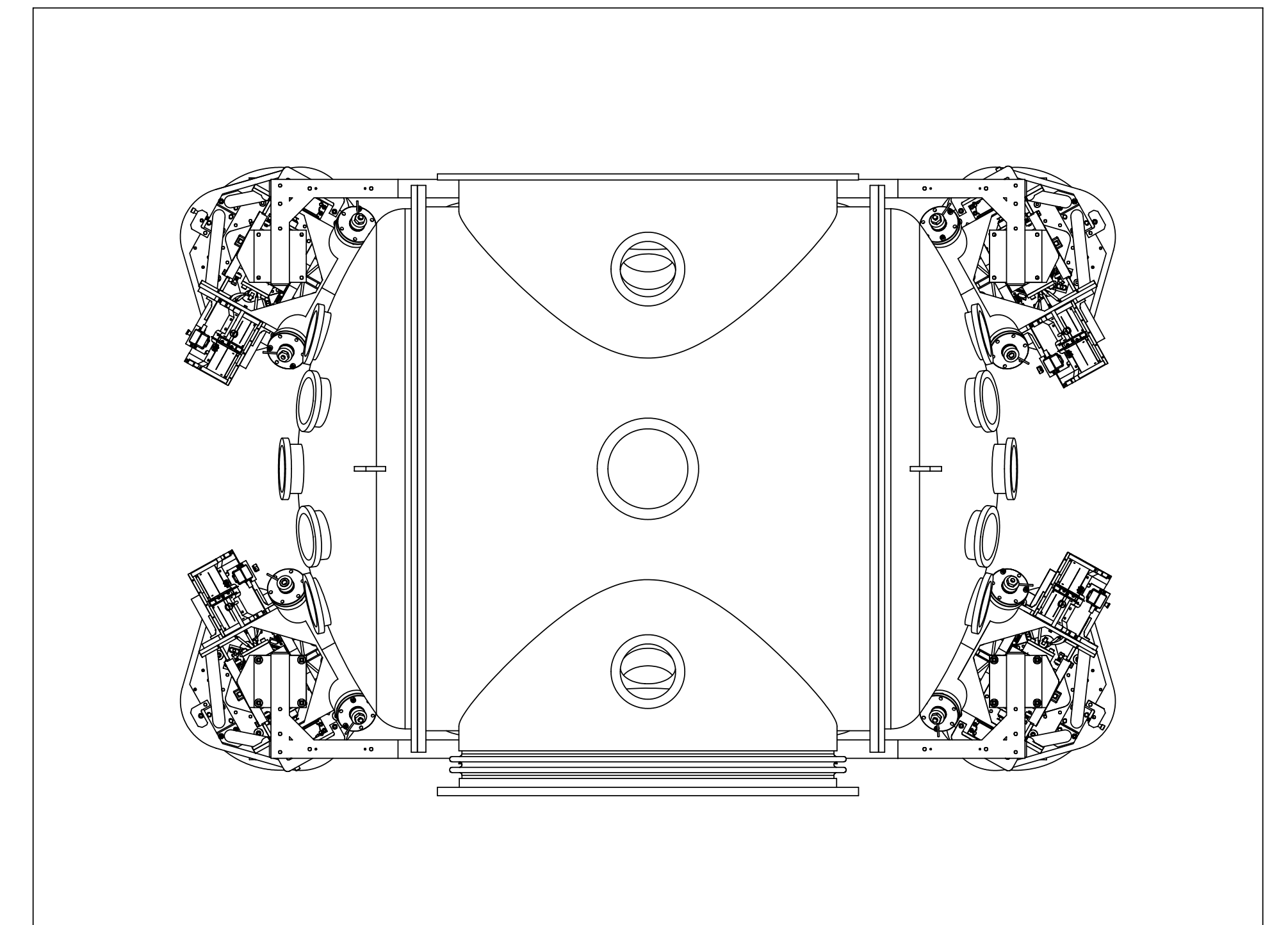
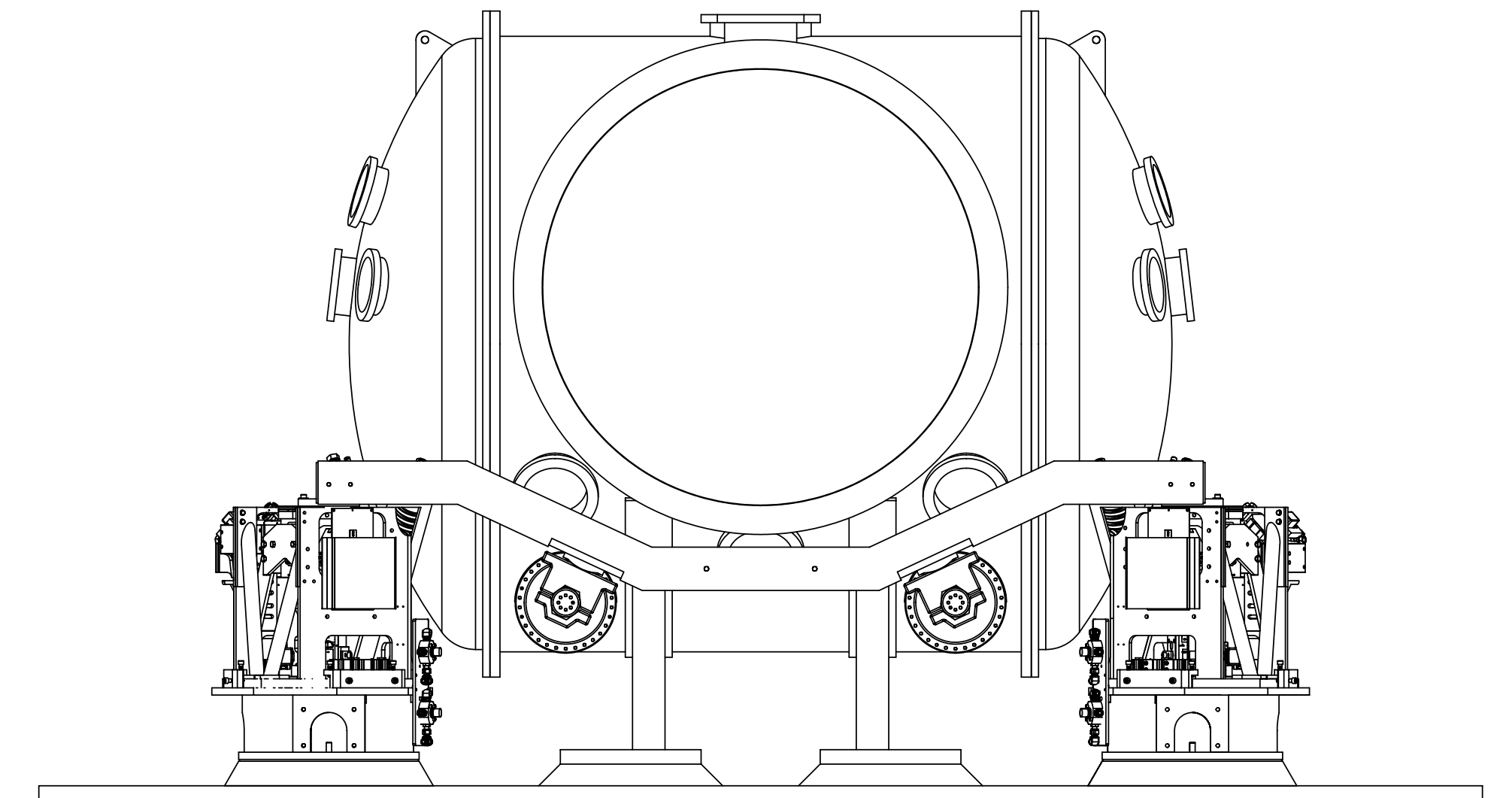
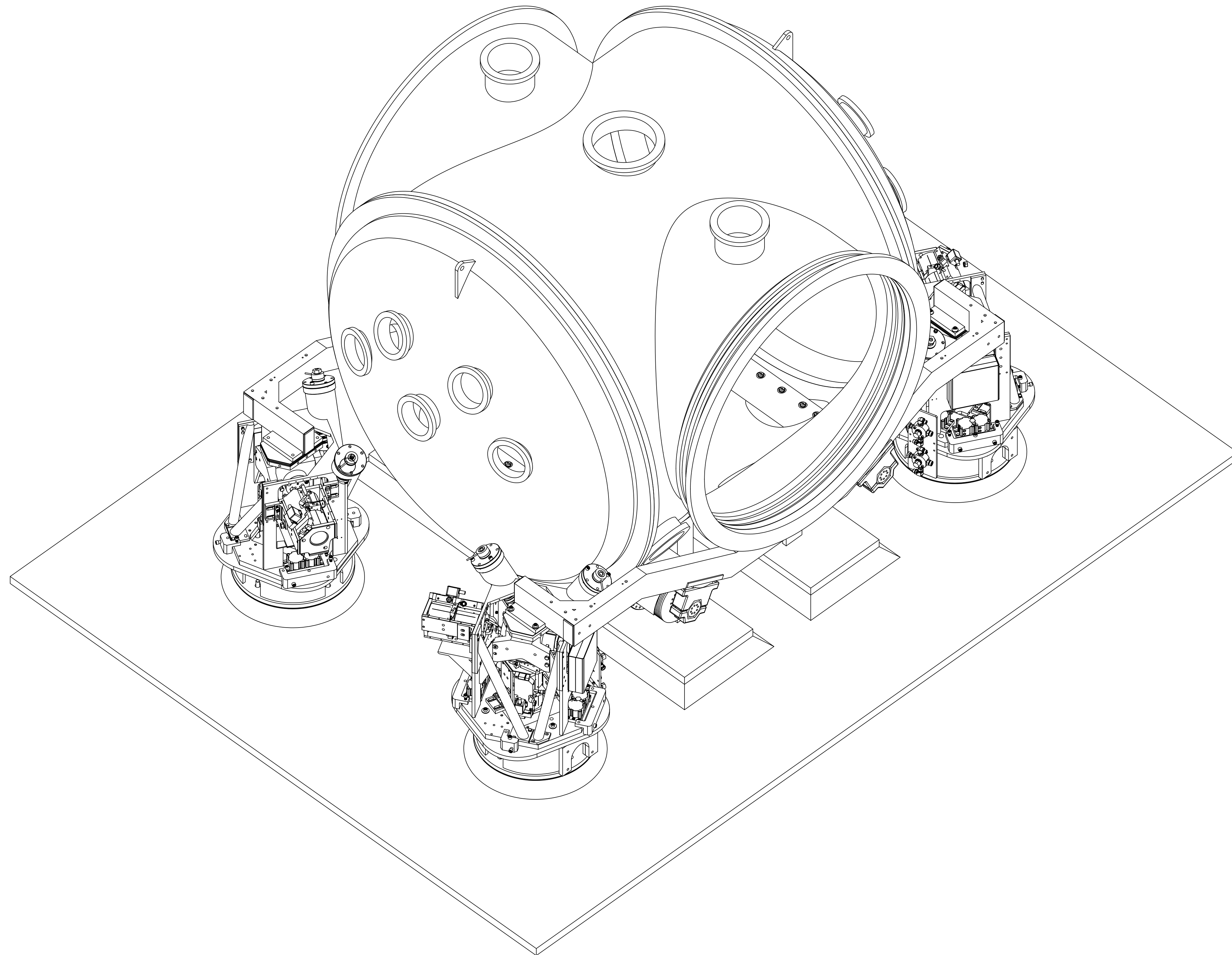


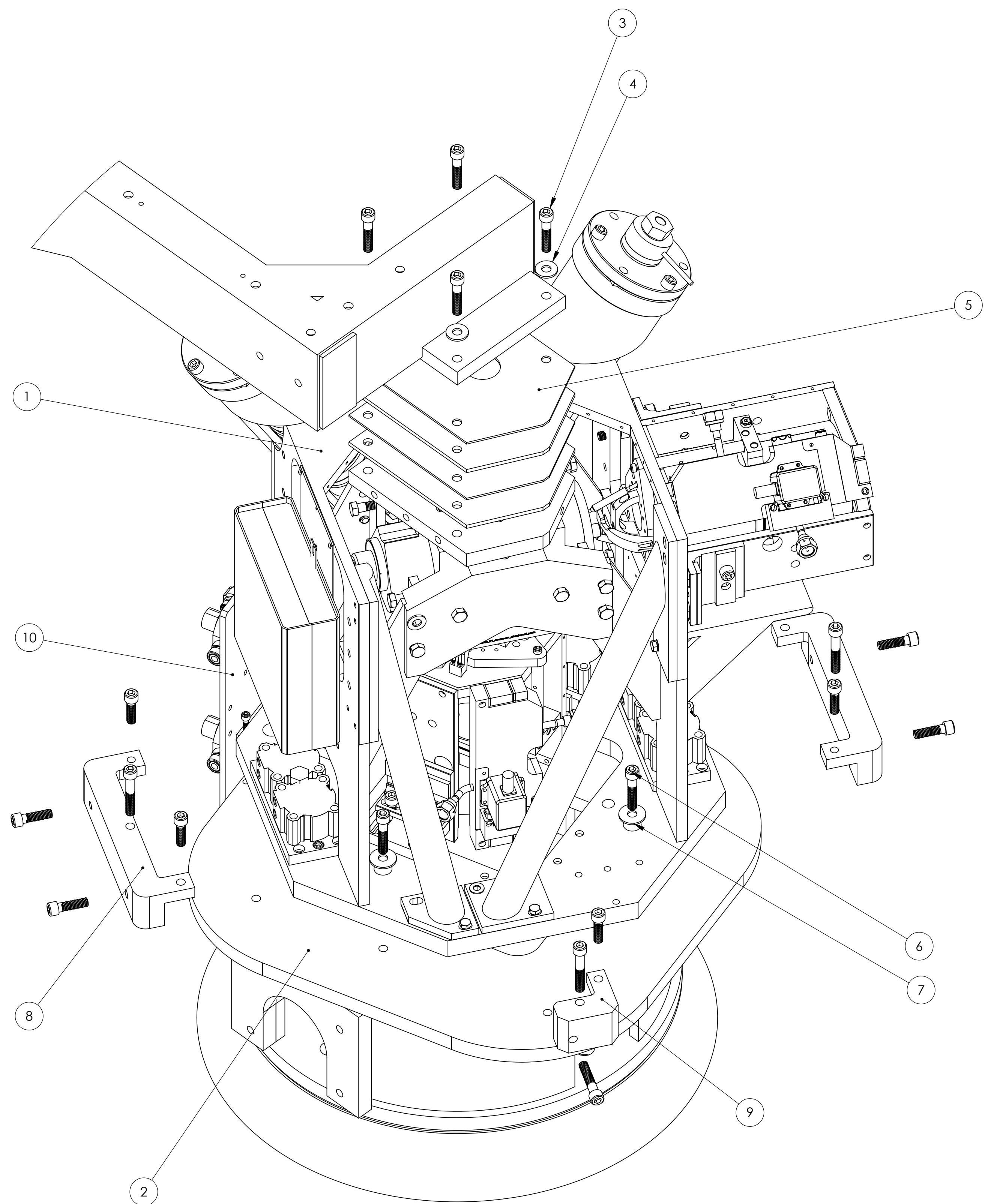
# HAM Top Level Assembly

REV.	DATE	DCN #	DRAWING TREE #
A	06/08/04	E040167-00-E	

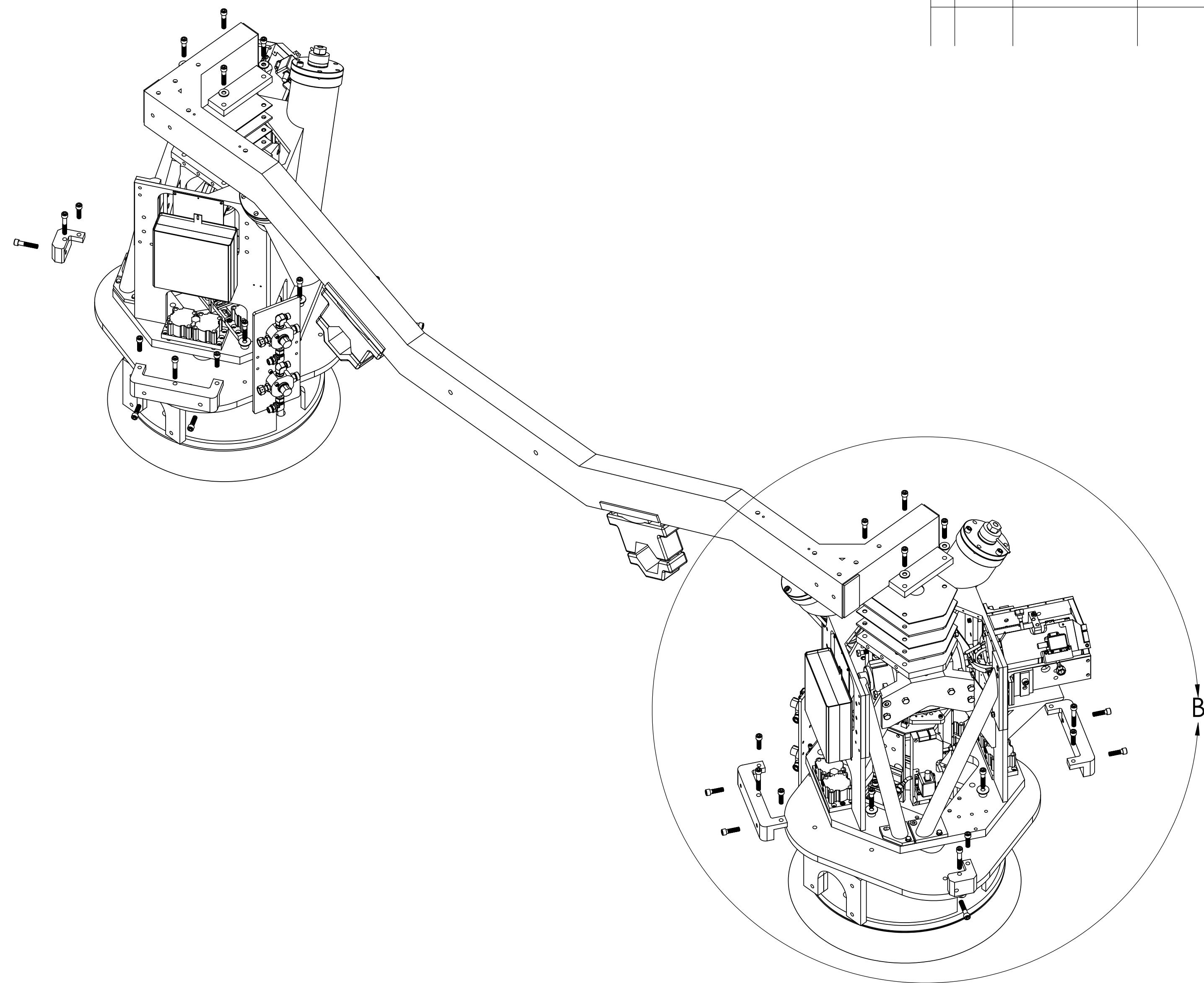


NOTES: (UNLESS OTHERWISE SPECIFIED)		LIGO CALIFORNIA INSTITUTE OF TECHNOLOGY MASSACHUSETTS INSTITUTE OF TECHNOLOGY	
DIMENSIONS ARE IN INCHES		SYSTEM External Pre Isolator	
TOLERANCES:		SUB-SYSTEM HEPI	
.XX ± 0.01		NEXT ASSY	
.XXX ± 0.005		PART NAME HAM Top Level Assembly	
ANGULAR ± 0.5 °		DRAWN O.SP.#EJD 01.06.04	
MATERIAL		CHECKED B	
FINISH		APPROVED	
		SCALE: 1:1	
		PROJECTION:	
		SHEET 1 OF 2	

REV.	DATE	DCN #	DRAWING TREE #
A	06/08/04	E040167-00-E	



**DETAIL B**  
**SCALE 1 : 4**



ITEM NO.	Default/QTY.	PART NUMBER	DESCRIPTION	VENDOR
1	1	D020124	EPI HAM Assembly (Right)	LLO
2	1	E030329	HAM Pier (Right)	Southern Enterprises, Inc.
3	4	91251A027	S.H.C.S. 1/2-20 x 2.75	McMaster - Carr.
4	4	98029A033	SAE 1/2 F.W. OD: 1.063	McMaster - Carr.
6	4	D030699 (D030698 Left)	HAM Shim Plates (Right)	Lavallee
7	4	92316A722	Hex Head Bolt 1/2-13 x 2.50	McMaster
7	4	92140A120	SAE 1/2 F.W. OD: 2.000	McMaster
8	2	D020269	Double Clamp	Lavallee
9	1	D020270	Offset Clamp (Right)	Lavallee
9b	1	D020271	Straight Clamp	Lavallee
10	1	D040103	HAM Four-way Valve Assembly	Parker / Southern

**NOTES: (UNLESS OTHERWISE SPECIFIED)**

DIMENSIONS ARE IN INCHES  
TOLERANCES:  
XX ± 0.01  
XXX ± 0.005  
ANGULAR ± 0.5 °

**MATERIAL**

**FINISH**

**SYSTEM** External Pre Isolator  
**SUB-SYSTEM** HEPI

**PART NAME** HAM Top Level Detail

**ITEM NO.** B  
**DWG. NO.** D040002 Sheet No. 2/2  
**SCALE:** 1:1  
**PROJECTION:**

**REVISIONS:**

REV.	DATE	BY	APP.
A	06/08/04		

**CHECKED:** O.SP.ELD  
**DATE:** 04.16.04

**APPROVED:**

**DRAWN:** O.SP.ELD  
**DATE:** 04.16.04

**CHECKED:** O.SP.ELD  
**DATE:** 04.16.04

**APPROVED:**

**SHEET 2 OF 2**