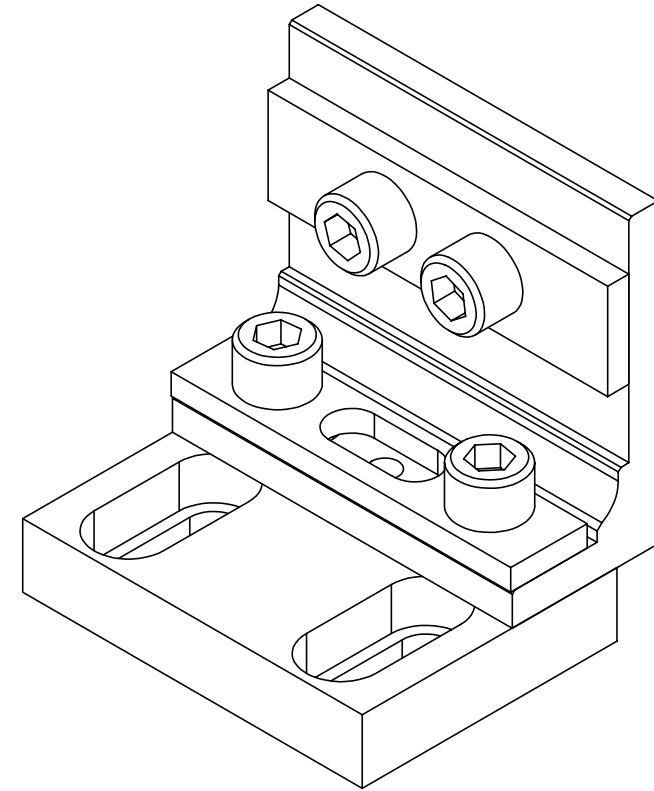
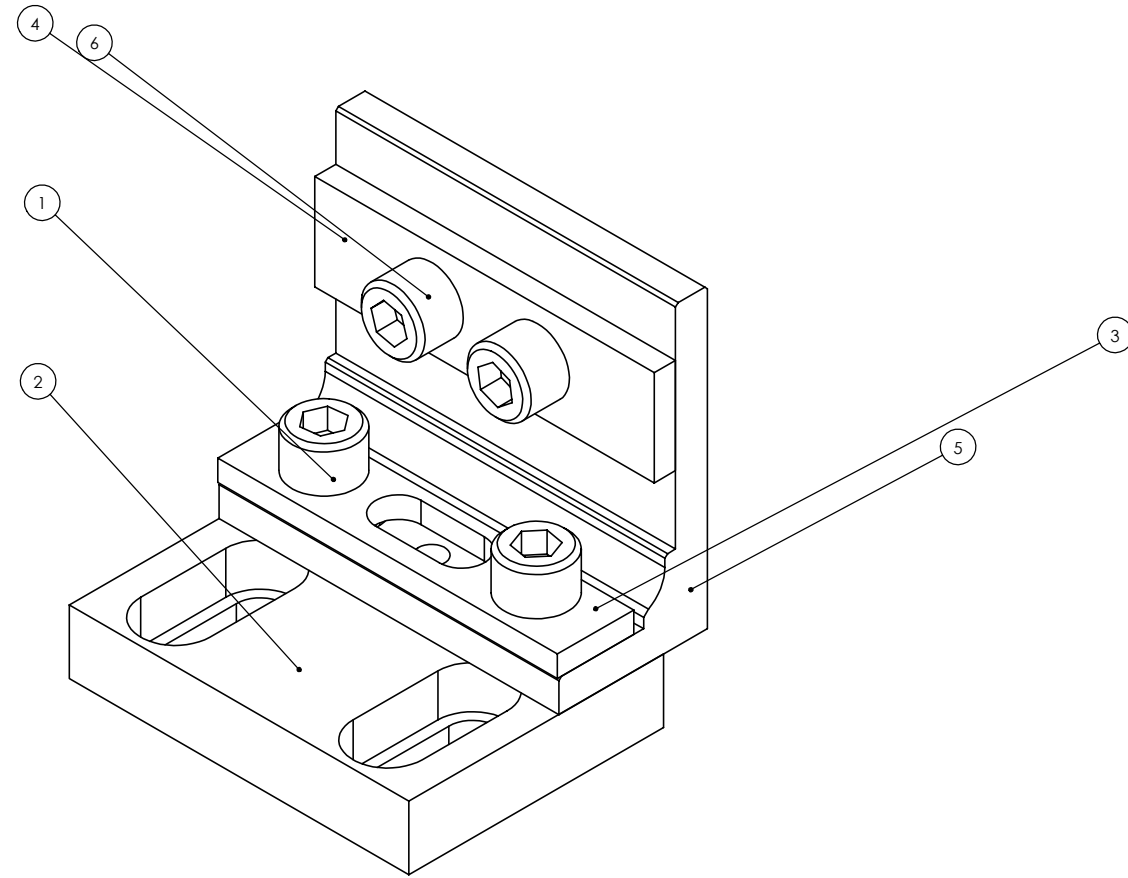


FILE NAME/LOCATION:

RELEASE FOR PRODUCTION, DCN No. E030521, 10.30.03

REV.	DATE	DCN #	DRAWING TREE #
A	10/18/03	E030521-00-E	



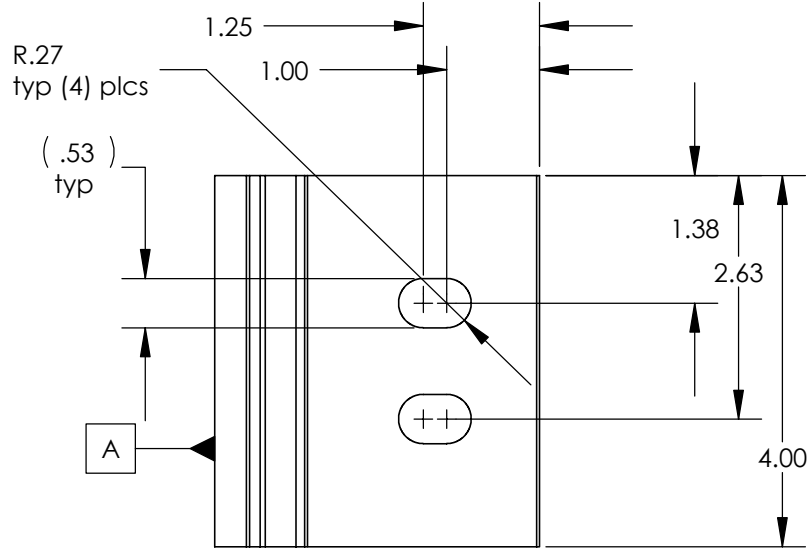
- NOTES: UNLESS OTHERWISE SPECIFIED
1. REMOVE ALL BURRS AND BREAK SHARP EDGES TO A MAXIMUM OF .015 R.02 MIN.
 2. PART NUMBER (DRAWING NO., DASH NO., REVISION NO.) TO BE CLEARLY MARKED ON THE PART ITSELF
 3. PAINT:
ALL VISIBLE SURFACES (exclude fastening hardware)
MEDIUM BLUE SHERWIN WILLIAMS (POLANE (R) T-PLUS POLYURETHANE ENAMEL) #SW-F63TX-L-2822-5864
PRIME WITH SHERWIN WILLIAMS INDUSTRIAL WASH PRIMER P60G2
 4. "OXI SOLV RUST INHIBITOR" TO BE APPLIED PER MFG. INSTRUCTIONS TO ALL UNPAINTED SURFACES.
BOTH TAPPED AND THRU HOLES WILL BE PLUGGED DURING APPLICATION.

ITEM NO	REQ.	SPARE	TOT.	PART NUMBER	DESCRIPTION	MATERIAL
1	2	0	2	SHCS 5	SHCS 1/2-20 x 1.25	318 SST
2	1	0	1	D030575	Unified Actuator Bracket Base	1018 CRS
3	1	0	1	D030575	Unified Actuator Bracket Bottom Backup Plate	1018 CRS
4	1	0	1	D030575	Unified Actuator Bracket Top Backup Plate	1018 CRS
5	1	0	1	D030575	Unified Actuator Bracket Angle	1018 CRS
6	2	0	2	SHCS 5	SHCS 1/2-20 x 1.00	318 SST

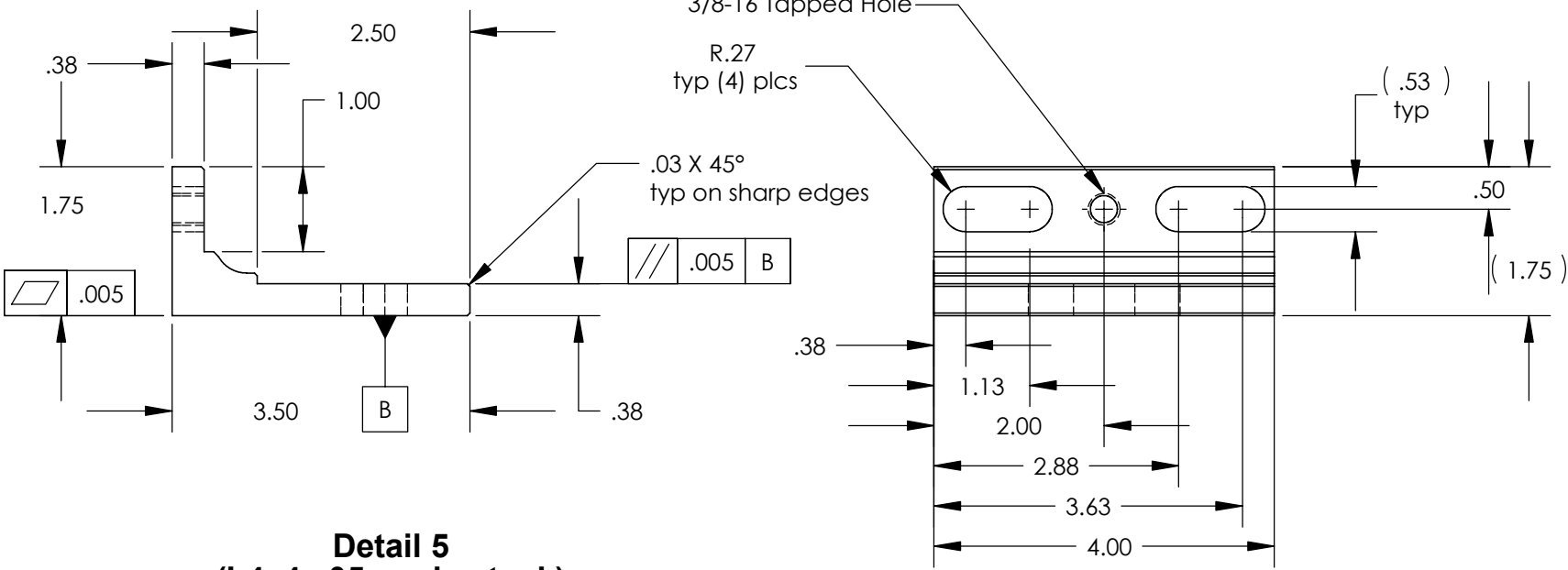
PARTS LIST		NOTES: (UNLESS OTHERWISE SPECIFIED)	
<p>1. REMOVE ALL SHARP EDGES. R.02 MIN.</p> <p>2. DO NOT SCALE FROM DRAWING.</p> <p>3. ALL MACHINING FLUIDS SHALL BE WATER SOLUBLE AND FREE OF SULFUR, CHLORINE AND SILICONE, SUCH AS CINCINNATI MILACRON'S CIMTECH 410 (STAINLESS STEEL)</p> <p>4. SCRIBE, ENGRAVE OR STAMP DRAWING PART NUMBER ON NOTED SURFACE OF PART AND A THREE DIGIT SERIAL NUMBER. SERIAL NUMBERS START AT 001 FOR THE FIRST PART AND PROCEED CONSECUTIVELY. USE 07 HIGH CHARACTER. EXAMPLE: D020188-001. A VIBRATORY TOOL MAY BE USED.</p>		<p>DIMENSIONS ARE IN INCHES</p> <p>TOLERANCES: XX ± 0.01 XXX ± 0.005 ANGULAR ± 0.5°</p> <p>MATERIAL see BOM</p> <p>FINISH 128 rms</p>	
<p>CAUTION: CALIFORNIA INSTITUTE OF TECHNOLOGY MASSACHUSETTS INSTITUTE OF TECHNOLOGY</p> <p>SYSTEM LIGO Integrated Model</p> <p>SUB-SYSTEM</p> <p>NEXT ASSY</p> <p>PART NAME</p> <p>Unified Hydraulic Actuator Bracket</p>		<p>SCALE: 1:1 PROJECTION: SHEET 1 OF 3</p>	
<p>DRAWN: 10/17/2003</p> <p>CHECKED: 10/16/2003</p> <p>APPROVED: </p>		<p>SIZE DWG. NO. D030575-A</p> <p>REV. A</p>	

RELEASE FOR PRODUCTION, DCN No. E030521, 10.30.03

- NOTES: UNLESS OTHERWISE SPECIFIED
1. REMOVE ALL BURRS AND BREAK SHARP EDGES TO A MAXIMUM OF .015
 2. PART NUMBER (DRAWING NO., DASH NO., REVISION NO.) TO BE CLEARLY MARKED ON THE PART ITSELF
 3. PAINT:
ALL VISIBLE SURFACES (exclude fastening hardware)
MEDIUM BLUE SHERWIN WILLIAMS (POLANE (R) T-PLUS POLYURETHANE ENAMEL) #SW-F63TX-L-2822-5864
PRIME WITH SHERWIN WILLIAMS INDUSTRIAL WASH PRIMER P60G2
"OXI SOLV RUST INHIBITOR" TO BE APPLIED PER MFG. INSTRUCTIONS TO ALL UNPAINTED SURFACES.
BOTH TAPPED AND THRU HOLES WILL BE PLUGGED DURING APPLICATION.

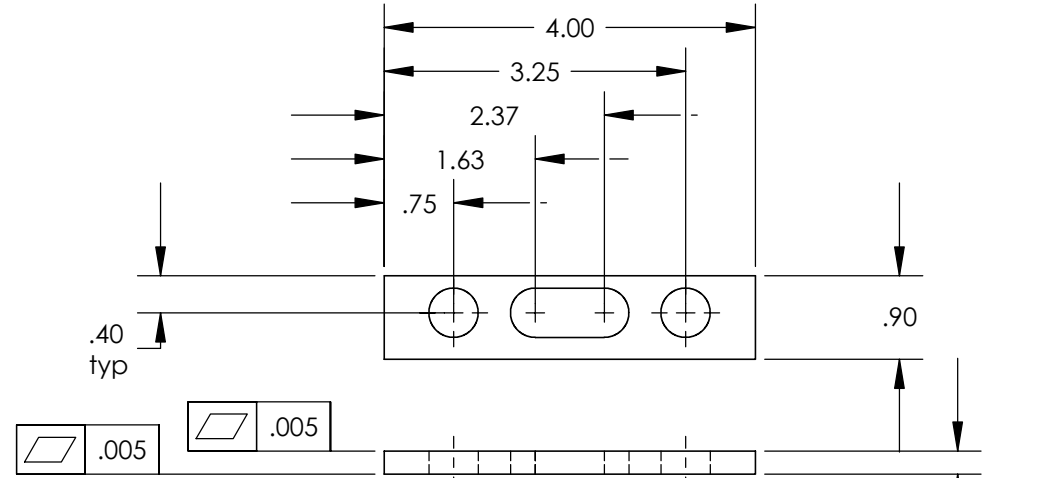


$\sqrt{\text{.005}}$ //.005 A

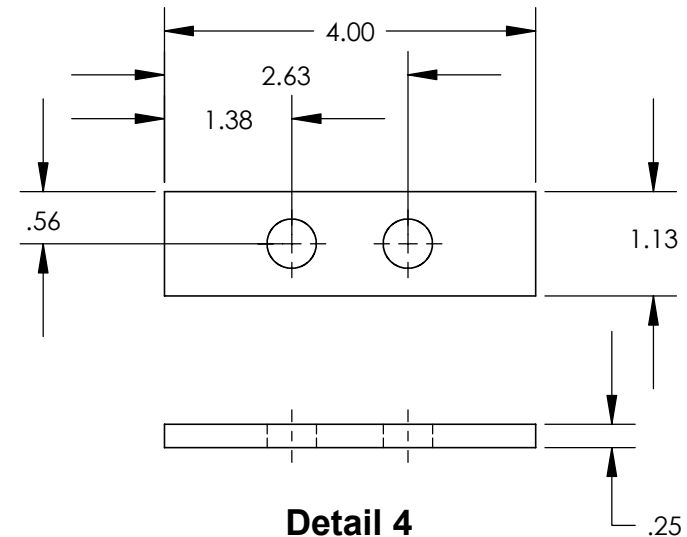


**Detail 5
(L4x4x.05 angle stock)**

//.005 B



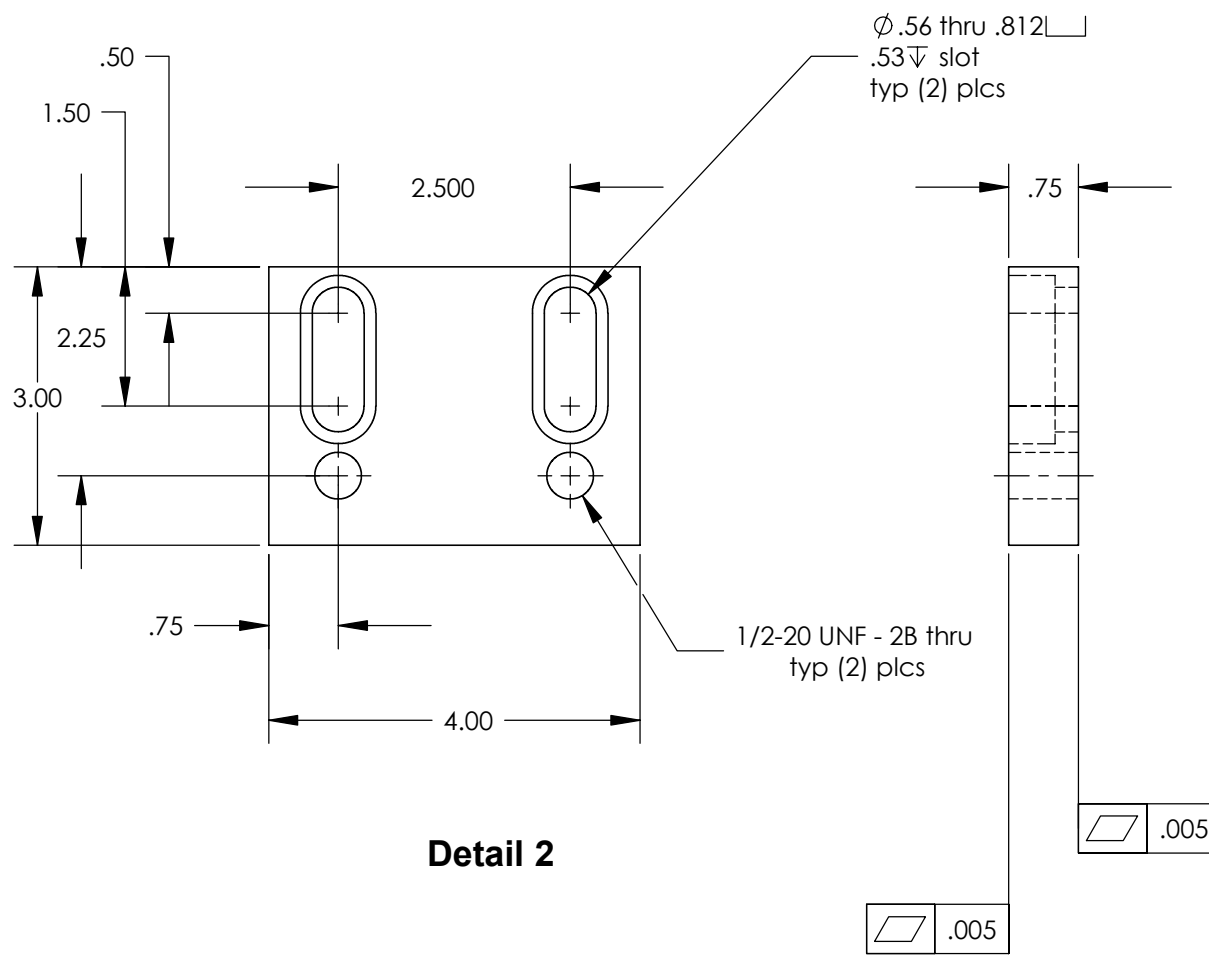
Detail 3



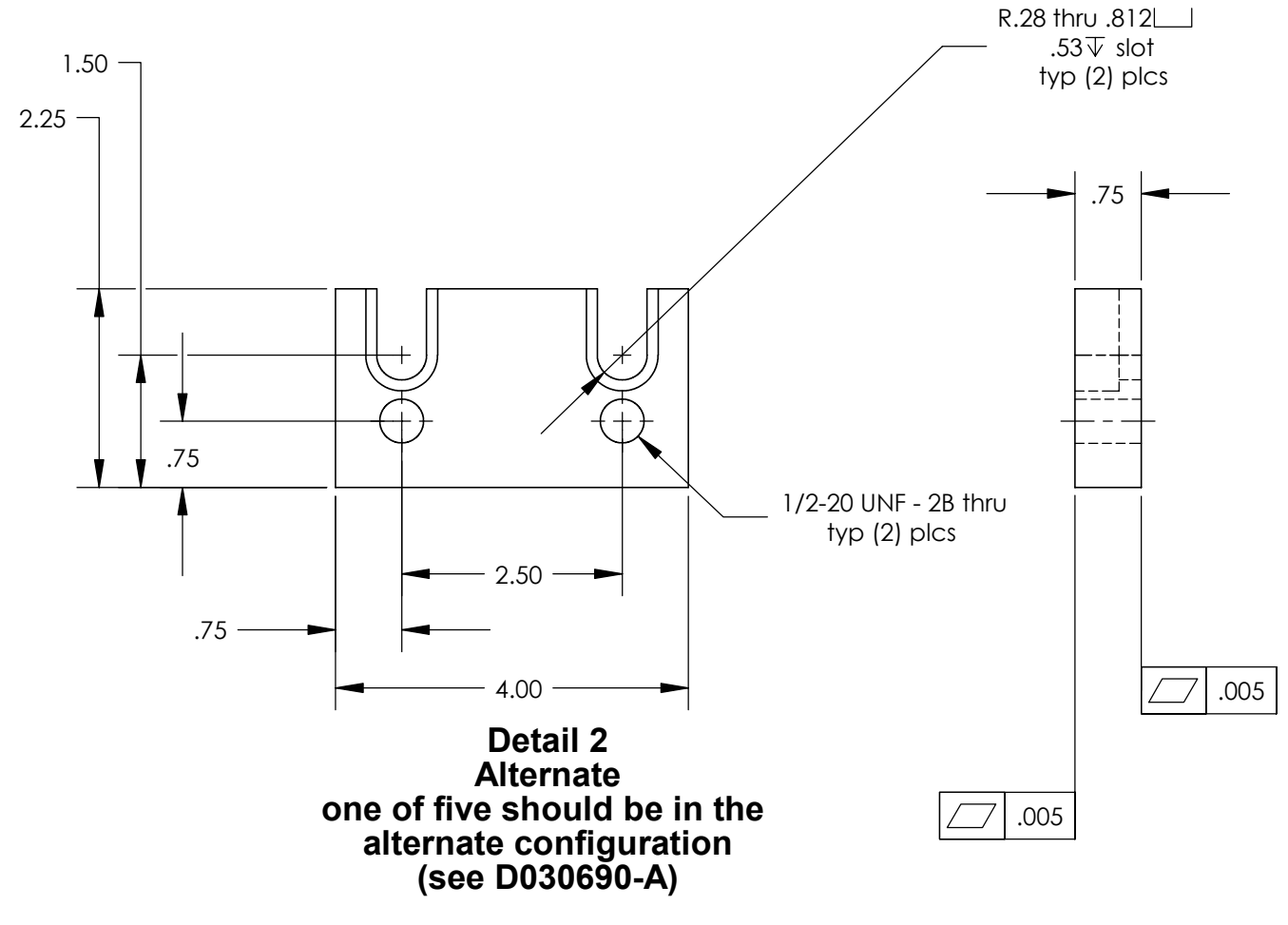
Detail 4

LIGO CALIFORNIA INSTITUTE OF TECHNOLOGY MASSACHUSETTS INSTITUTE OF TECHNOLOGY		
SYSTEM	LIGO Integrated Model	
SUB-SYSTEM		
NEXT ASSY		
PART NAME	Unified Actuator Bracket Angle	
SIZE	DWG. NO.	REV
B	D030575-A	A
SCALE: 1:2		SHEET 2 OF 3

RELEASE FOR PRODUCTION, DCN No. E030521, 10.30.03



Detail 2



Detail 2 Alternate
one of five should be in the alternate configuration (see D030690-A)

- NOTES: UNLESS OTHERWISE SPECIFIED
1. REMOVE ALL BURRS AND BREAK SHARP EDGES TO A MAXIMUM OF .015
 2. PART NUMBER (DRAWING NO., DASH NO., REVISION NO.) TO BE CLEARLY MARKED ON THE PART ITSELF
 3. PAINT:
ALL VISIBLE SURFACES (exclude fastening hardware)
MEDIUM BLUE SHERWIN WILLIAMS (POLANE (R) T-PLUS POLYURETHANE ENAMEL) #SW-F63TX-L-2822-5864
PRIME WITH SHERWIN WILLIAMS INDUSTRIAL WASH PRIMER P60G2
 4. "OXI SOLV RUST INHIBITOR" TO BE APPLIED PER MFG. INSTRUCTIONS TO ALL UNPAINTED SURFACES.
BOTH TAPPED AND THRU HOLES WILL BE PLUGGED DURING APPLICATION.

LIGO CALIFORNIA INSTITUTE OF TECHNOLOGY MASSACHUSETTS INSTITUTE OF TECHNOLOGY		
SYSTEM LIGO Integrated Model		
SUB-SYSTEM		
NEXT ASSY		
PART NAME Unified Actuator Bracket Base		
SIZE B	DWG. NO. D030575-A	REV A
SCALE: 1:1		SHEET 3 OF 3