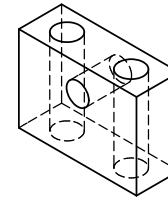
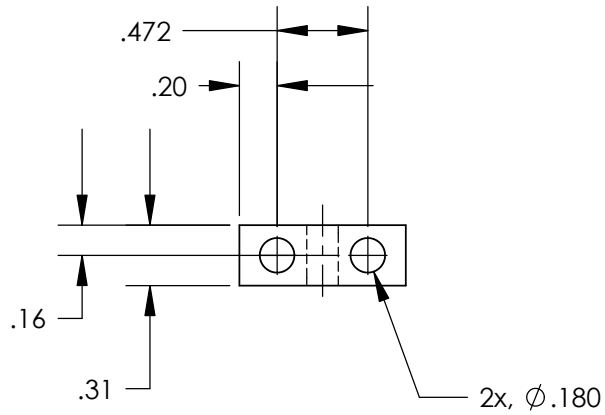


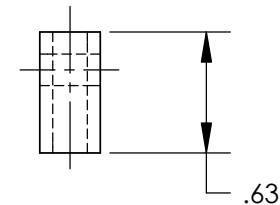
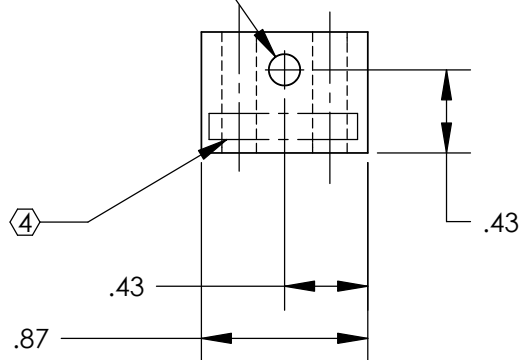
| REV. | DATE | DCN # | DRAWING TREE # |
|------|--------------|------------|----------------|
| A | 24 JUNE 2004 | E040303-00 | |



D030450_RotationalAdjuster_PullPlate.step



#8-32 UNC
+.005 OVERSIZE
TAPPED THRU



NOTES: (UNLESS OTHERWISE SPECIFIED)

1. REMOVE ALL SHARP EDGES, R.02 MIN.
2. DO NOT SCALE FROM DRAWING.
3. ALL MACHINING FLUIDS SHALL BE WATER SOLUBLE AND FREE OF SULFUR, CHLORINE AND SILICONE, SUCH AS CINCINNATI MILACRON'S CIMTECH 410 (STAINLESS STEEL)
- ④ SCRIBE, ENGRAVE OR STAMP DRAWING PART NUMBER ON NOTED SURFACE OF PART AND THEN A THREE DIGIT SERIAL NUMBER. SERIAL NUMBERS START AT 001 FOR THE FIRST PART AND PROCEED CONSECUTIVELY. USE .07" HIGH CHARACTERS. EXAMPLE: D020188-001. A VIBRATORY TOOL MAY BE USED.

DIMENSIONS ARE IN INCHES

TOLERANCES:
.XX ± 0.01
.XXX ± 0.005

ANGULAR ± 0.5 °

MATERIAL
300 SSSL

FINISH
N/A

| | NAME | DATE |
|-----------------|-----------|-----------|
| DRAWN | MPL (IGR) | 04SEP03 |
| CHECKED | CIT, JHR | 15 SEP 03 |
| APPROVED | | |



SYSTEM ADVANCED LIGO

SUB-SYSTEM SUS

NEXT ASSY Rotational Adjuster

PART NAME PULL PLATE

SIZE **DWG. NO.** D030450 **REV.** A

SCALE: 1:1 **PROJECTION:** **SHEET 1 OF 1**