

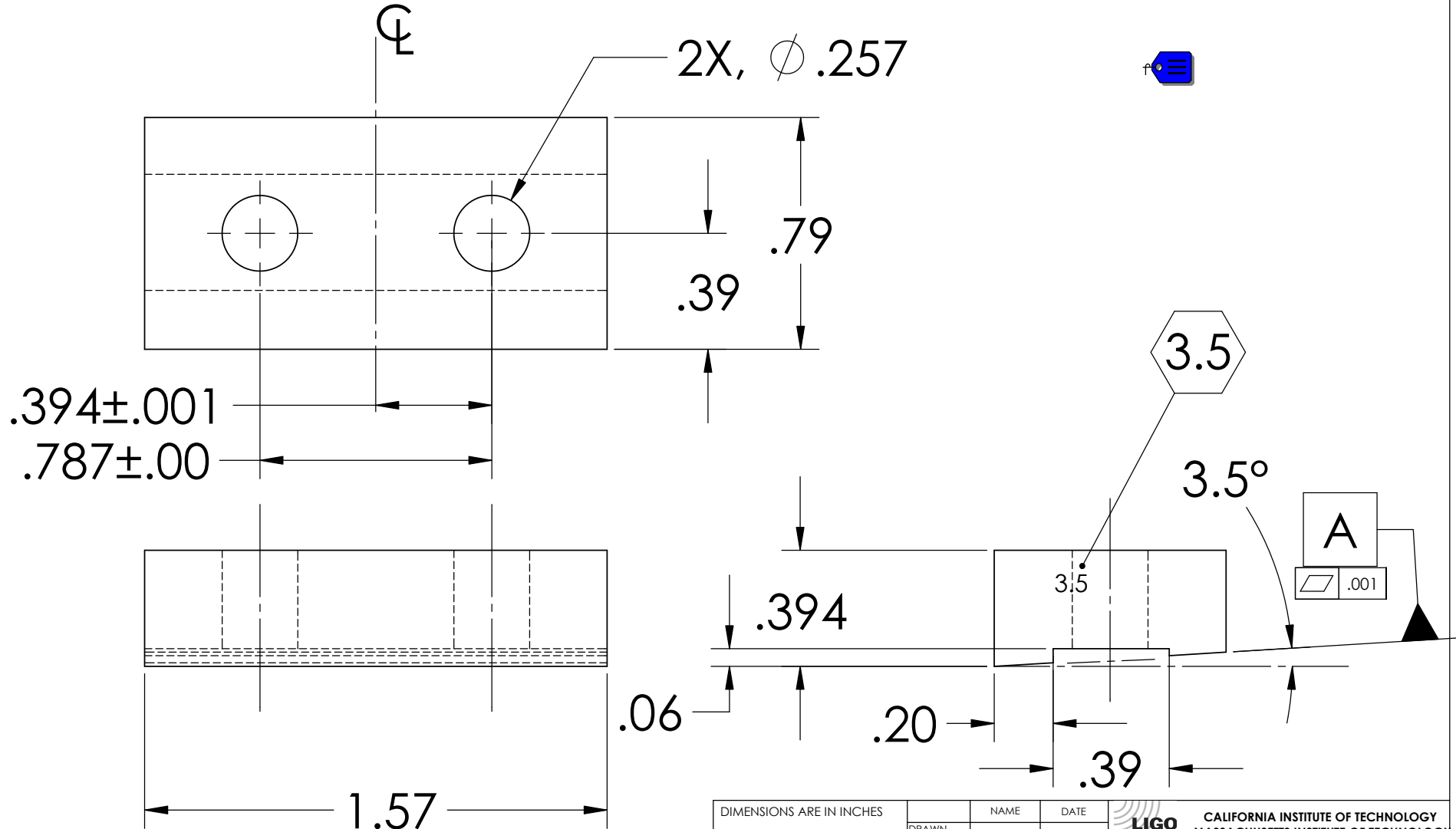
NOTES: (UNLESS OTHERWISE SPECIFIED)

1. DIMENSIONS IN INCHES

2. ALL MACHINING FLUIDS SHALL BE WATER SOLUBLE AND FREE OF SULFUR, CHLORINE AND SILICONE, SUCH AS CINCINNATI MILACRON'S CIMTECH 410 (STAINLESS STEEL)

3. USING A VIBRATORY TOOL MARK PART AS INDICATED

REV.	DATE	DCN #	DRAWING TREE #



DIMENSIONS ARE IN INCHES TOLERANCES: .XX ±0.01 .XXX ±0.005 ANGULAR ±.25°	NAME	DATE	CALIFORNIA INSTITUTE OF TECHNOLOGY MASSACHUSETTS INSTITUTE OF TECHNOLOGY IGR-UNIVERSITY OF GLASGOW / GEO-400 GROUP
	DRAWN	05/02	
MATERIAL	CIT/RJ		SYSTEM
300 Series Stainless	CHECKED		SUB-SYSTEM
FINISH			SUS
	COMMENTS:		NEXT ASSY
			LIBRARY OF CLAMPS
			PART NAME
			UPPER BLADE CLAMP UPPERSIDE ANGLED (3.5°)
	SIZE	DWG. NO.	REV.
	A	D020690	00
	SCALE: NTS		SHEET 1 OF 1