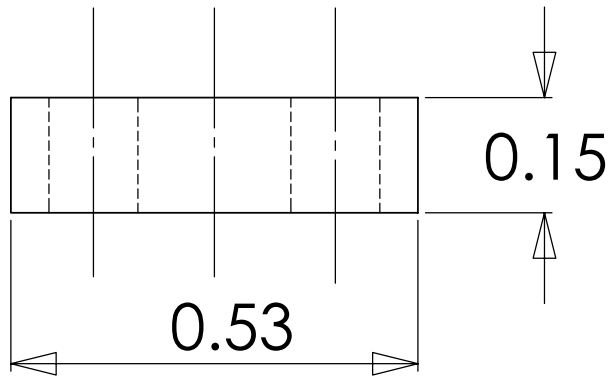
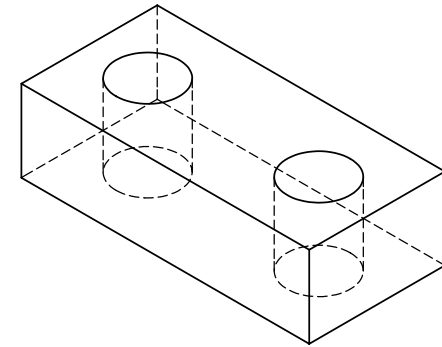
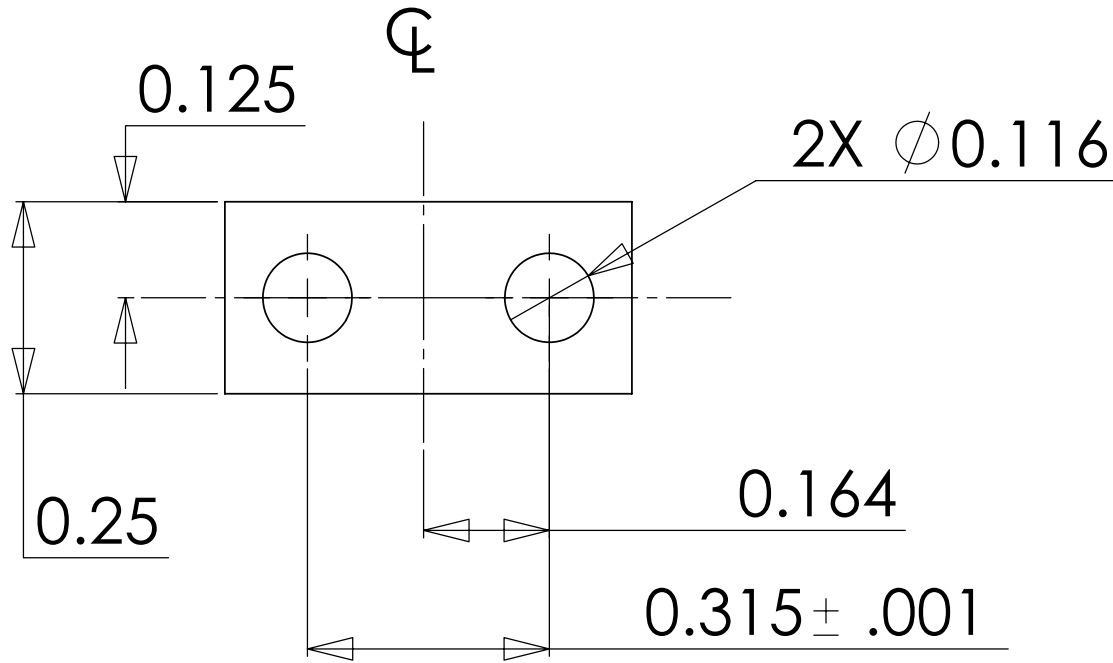



NOTES: (UNLESS OTHERWISE SPECIFIED)

1. DIMENSIONS IN INCHES

2. ALL MACHINING FLUIDS SHALL BE WATER SOLUBLE AND FREE OF SULFUR, CHLORINE AND SILICONE, SUCH AS CINCINNATI MILACRON'S CIMTECH 410 (STAINLESS STEEL)

REV.	DATE	DCN #	DRAWING TREE #



DIMENSIONS ARE IN INCHES		NAME	DATE	 CALIFORNIA INSTITUTE OF TECHNOLOGY MASSACHUSETTS INSTITUTE OF TECHNOLOGY
TOLERANCES: .XX ±0.01 .XXX ±0.005 ANGULAR ±1°		DRAWN DM	07/16	
MATERIAL		CHECKED		SYSTEM ADVANCED LIGO
FINISH		COMMENTS:		SUB-SYSTEM SUS
				NEXT ASSY MC
				PART NAME MACHINED CLAMP BASE
		SIZE A	DWG. NO. D020380-00-D	REV.
		SCALE: 4:1		SHEET 1 OF 1