

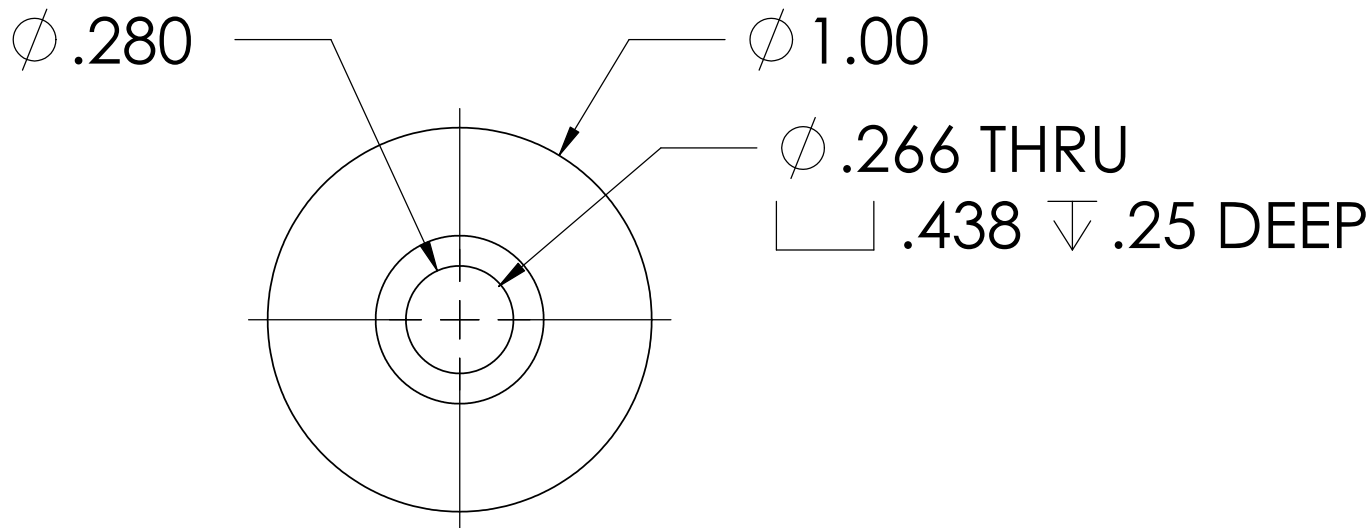
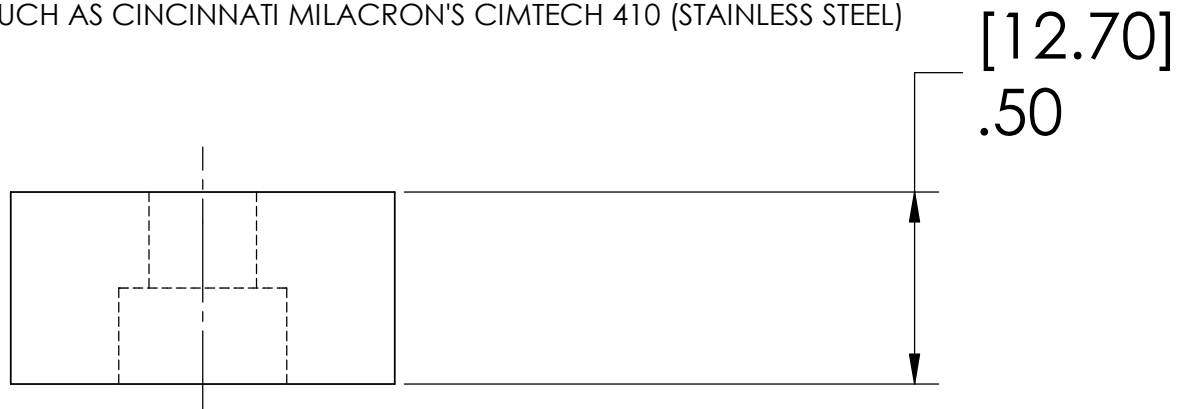
NOTES: (UNLESS OTHERWISE SPECIFIED)

1. DIMENSIONS IN INCHES


2. REMOVE ALL SHARP EDGES, R.02 MIN

3. ALL MACHINING FLUIDS SHALL BE WATER SOLUBLE AND FREE OF SULFUR, CHLORINE AND SILICONE, SUCH AS CINCINNATI MILACRON'S CIMTECH 410 (STAINLESS STEEL)

REV.	DATE	
A	24th JUNE 2004	E040303-00



D020351\_50g\_mass.step

DIMENSIONS ARE IN INCHES		NAME	DATE	 <b>CALIFORNIA INSTITUTE OF TECHNOLOGY MASSACHUSETTS INSTITUTE OF TECHNOLOGY</b>
TOLERANCES: .XX ±0.01 .XXX ±0.005 ANGULAR ±1°		DRAWN CIT	06/28/02	
MATERIAL 300 SERIES STAINLESS		CHECKED		SYSTEM ADVANCED LIGO
FINISH				SUB-SYSTEM SUS
				NEXT ASSY MC: UPPER MASS
		COMMENTS:		PART NAME UPPER MASS 50g ADD ON MASS
		SIZE <b>A</b>	DWG. NO. D020351	REV. A
		SCALE: NTS		SHEET 1 OF 1