

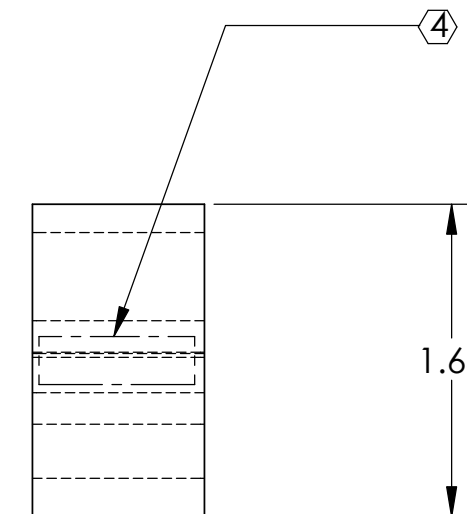
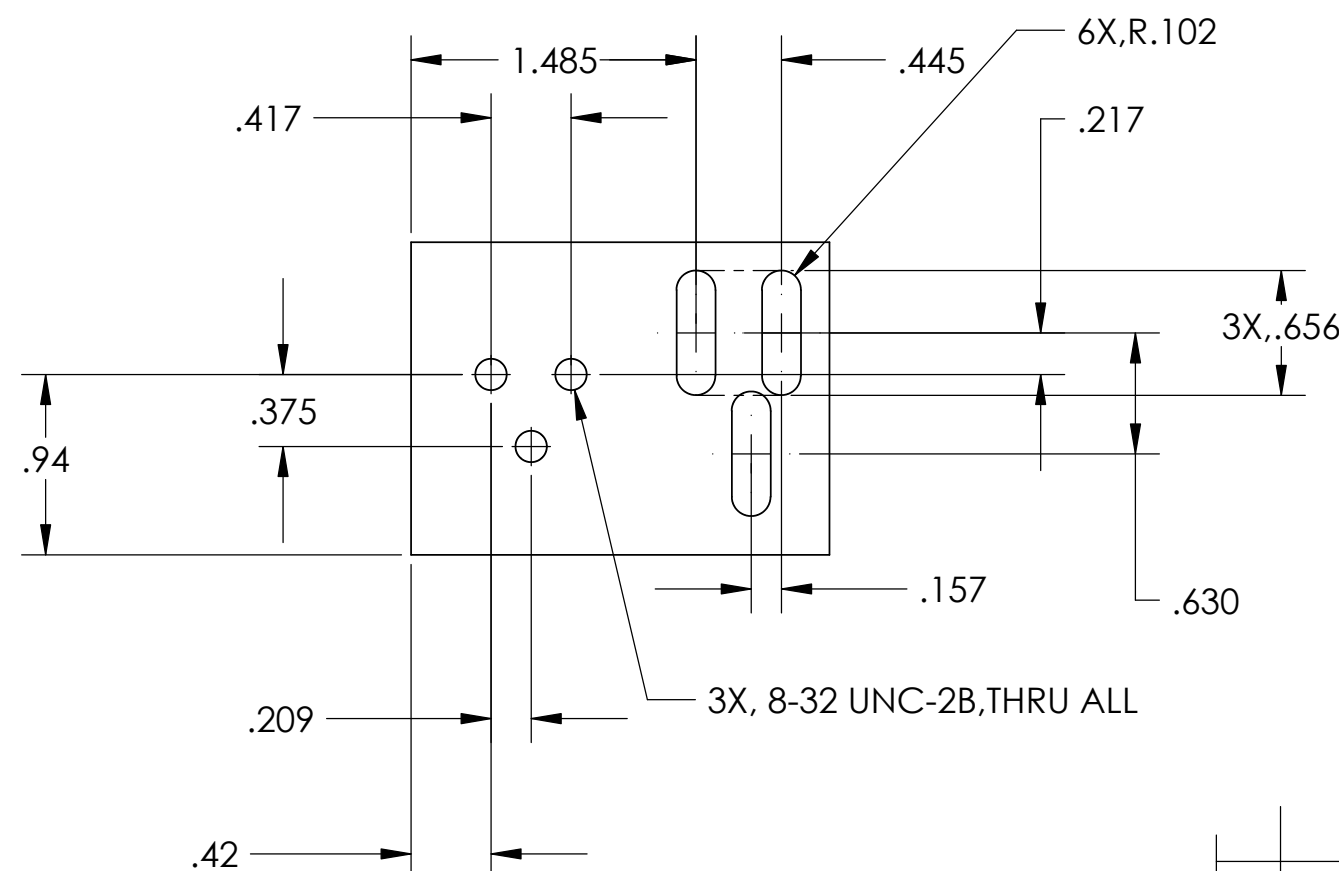
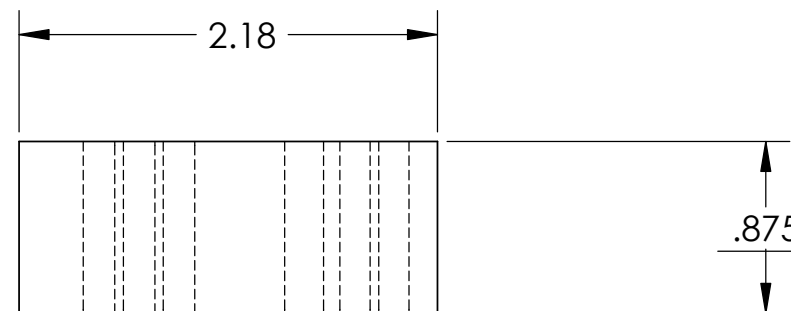
NOTES: (UNLESS OTHERWISE SPECIFIED)

1. DIMENSIONS IN INCHES.
2. BREAK ALL SHARP EDGES.
3. ALL MACHINING FLUIDS SHALL BE WATER SOLUBLE AND FREE OF SULFUR, CHLORINE AND SILICONE, SUCH AS CINCINNATI MILACRON'S CIMTECH 410 (STAINLESS STEEL.)
4. ETCH OR STAMP DRAWING PART NUMBER ON NOTED SURFACE OF PART AND THEN A THREE DIGIT SERIAL NUMBER. SERIAL NUMBERS START AT 001 FOR THE FIRST PART AND PROCEED CONSEQUETIVELY. USE .07" HIGH CHARACTERS. EXAMPLE: D020346-A 001

REV.	DATE	DCN #	DRAWING TREE #
A	7/04	E040303-00	E030507-A



D020346_MCStructure_TableclothBracket.step



ITEM NO.	REQ.	SPARE	TOT.	PART NUMBER	DESCRIPTION	SUPPLIER	
	QUANTITY						
UNLESS OTHERWISE SPECIFIED:							
DIMENSIONS ARE IN INCHES				DATE	NAME	CALIFORNIA INSTITUTE OF TECHNOLOGY MASSACHUSETTS INSTITUTE OF TECHNOLOGY	
TOLERANCES:				DRAWN	6/02		J.ROMIE
.XX ±: .01				CHECKED			
.XXX ±: .005							
ANGULAR: ±0.5 DEG							
MATERIAL				COMMENTS:		SYSTEM ADLIGO SUB-SYSTEM SUS NEXT ASSY MODE CLEANER SUSPENSION	
6061-T6-AI						PART NAME TABLECLOTH BRACKET	
FINISH						SIZE B DWG. NO. D020346 REV A SCALE: 1/1 SHEET 1 OF 1	