

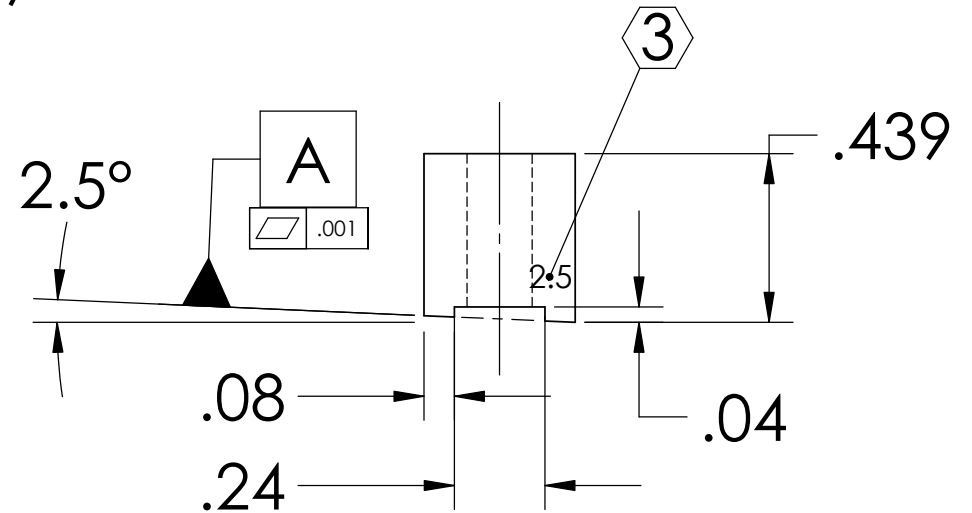
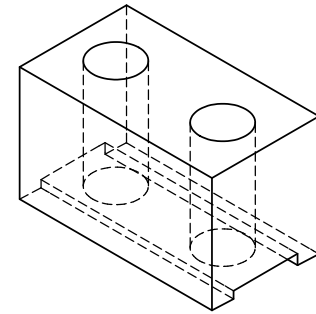
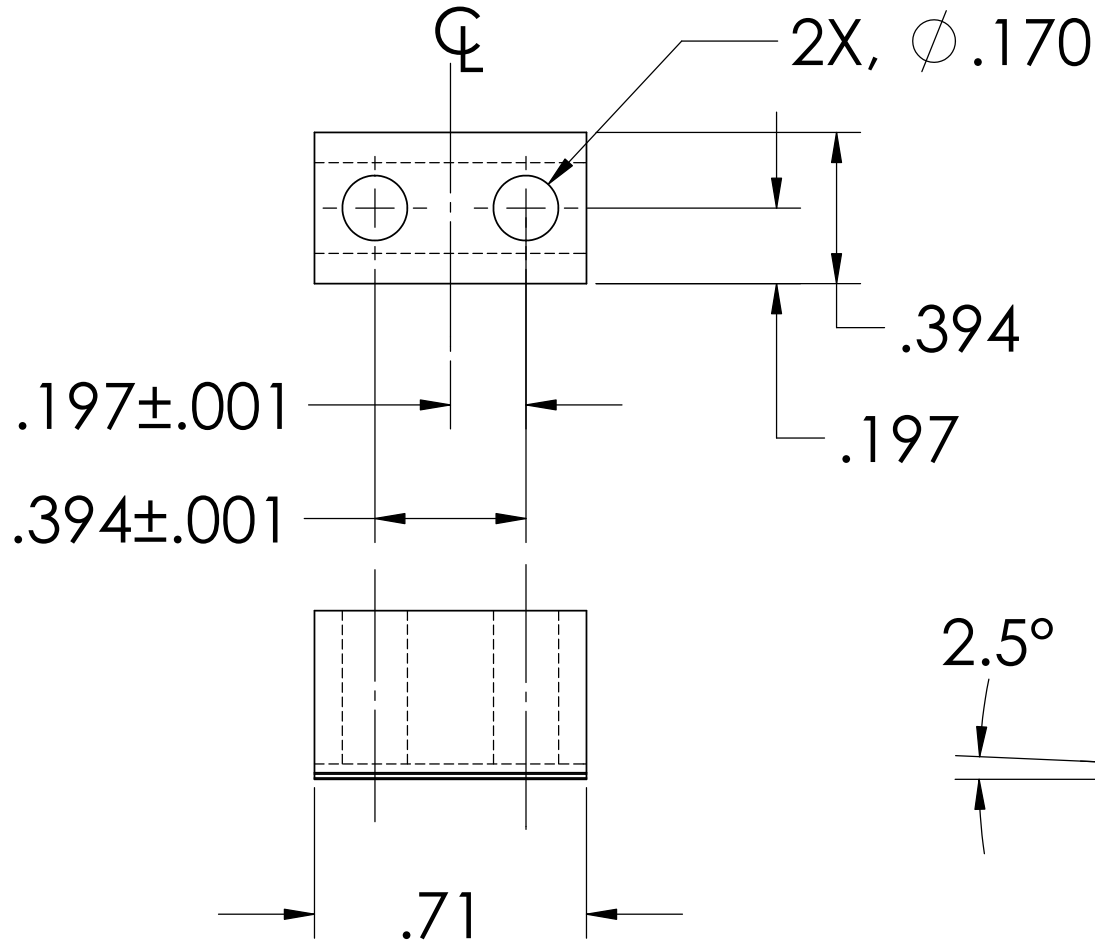
NOTES: (UNLESS OTHERWISE SPECIFIED)

1. DIMENSIONS IN INCHES

2. ALL MACHINING FLUIDS SHALL BE WATER SOLUBLE AND FREE OF SULFUR, CHLORINE AND SILICONE, SUCH AS CINCINNATI MILACRON'S CIMTECH 410 (STAINLESS STEEL)

③ USING A VIBRATORY TOOL MARK PART AS INDICATED

REV.	DATE	DCN #	DRAWING TREE #
A	24 JUNE 2004	E040303-00	



lowerbladeclamp\_upperside\_angled\_2.5degree.step

DIMENSIONS ARE IN INCHES		NAME	DATE	CALIFORNIA INSTITUTE OF TECHNOLOGY MASSACHUSETTS INSTITUTE OF TECHNOLOGY
TOLERANCES: .XX ±0.01 .XXX ±0.005 ANGULAR ±.25°		CIT/RJ	05/02	
MATERIAL 300 Series Stainless		DRAWN		SYSTEM ADVANCED LIGO
FINISH		CHECKED		SUB-SYSTEM SUS
		COMMENTS:		NEXT ASSY LIBRARY OF CLAMPS
		SCALE: NTS		PART NAME LOWER BLADE CLAMP UPPER SIDE ANGLED (2.5°)
		SIZE A	DWG. NO. D020340	REV. A
		SHEET 1 OF 1		