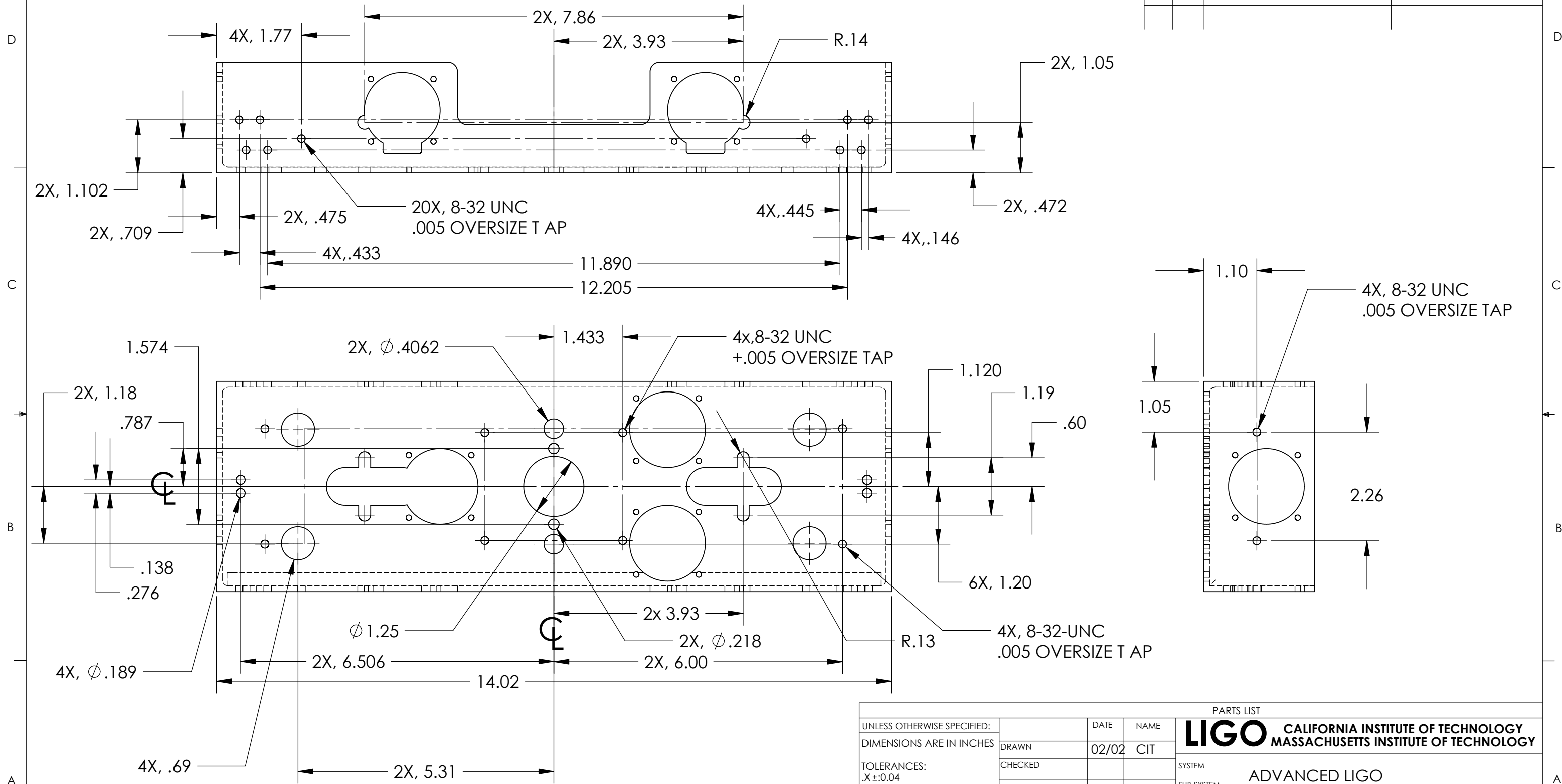




NOTES: (UNLESS OTHERWISE SPECIFIED)  
 1. DIMENSIONS IN INCHES  
 2. REMOVE ALL SHARP EDGES, R.02 MIN  
 3. ALL MACHINING FLUIDS SHALL BE WATER SOLUBLE AND FREE OF SULFUR, CHLORINE AND SILICONE, SUCH AS CINCINNATI MILACRON'S CIMTECH 410 (STAINLESS STEEL)

REV.	DATE		



UNLESS OTHERWISE SPECIFIED:				PARTS LIST	
DIMENSIONS ARE IN INCHES		DRAWN	DATE	NAME	<b>LIGO</b> CALIFORNIA INSTITUTE OF TECHNOLOGY MASSACHUSETTS INSTITUTE OF TECHNOLOGY
TOLERANCES: .X ±:0.04 .XX ±:0.01 .XXX ±:0.005 ANGULAR: ±1°		CHECKED	02/02	CIT	
MATERIAL		COMMENTS:			SYSTEM ADVANCED LIGO
FINISH					SUB-SYSTEM SUS
					NEXT ASSY MC: COIL HOLDER
					PART NAME TABLE CLOTH COIL HOLDER
		SIZE	DWG. NO.	REV	
		<b>B</b>	D020239	<b>A</b>	
		SCALE: NTS			SHEET 2 OF 2