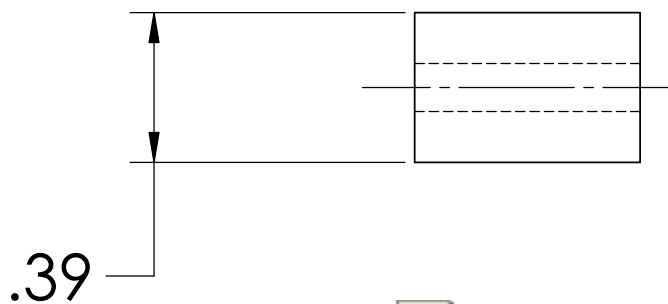
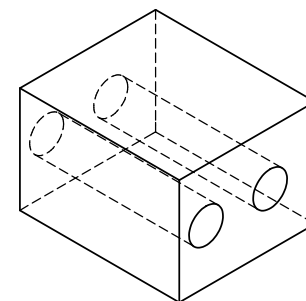
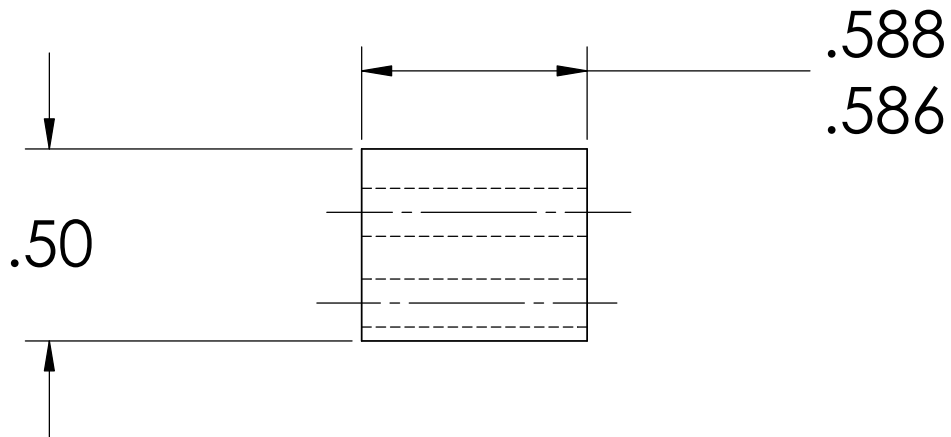


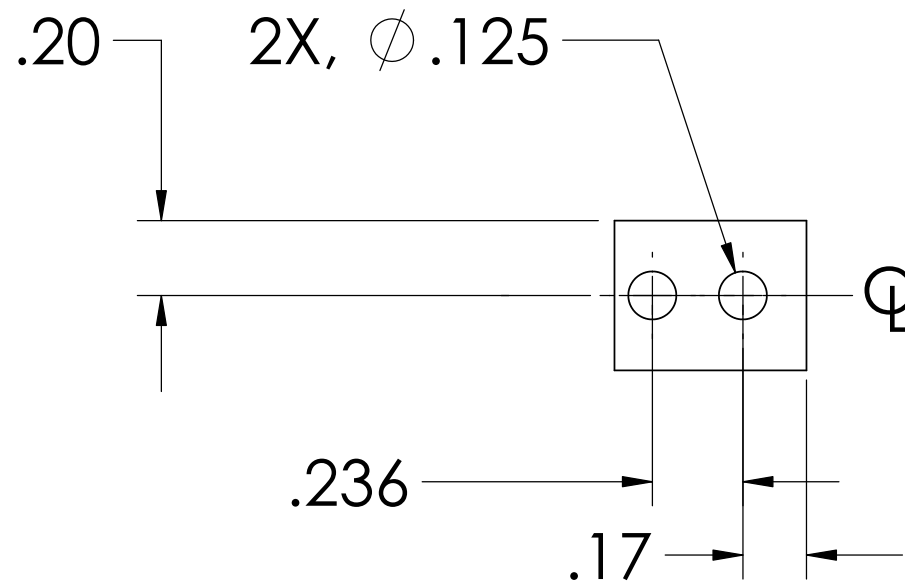
NOTES: (UNLESS OTHERWISE SPECIFIED)


1. DIMENSIONS IN INCHES
2. REMOVE ALL SHARP EDGES, R.02 MIN
3. ALL MACHINING FLUIDS SHALL BE WATER SOLUBLE AND FREE OF SULFUR, CHLORINE AND SILICONE, SUCH AS CINCINNATI MILACRON'S CIMTECH 410 (STAINLESS STEEL)

REV.	DATE	DCN #	DRAWING TREE #
A	24th JUNE 2004	E040303-00	



D020211_Fit_for_MagnetHolder.step



DIMENSIONS ARE IN INCHES		NAME	DATE	 CALIFORNIA INSTITUTE OF TECHNOLOGY MASSACHUSETTS INSTITUTE OF TECHNOLOGY
TOLERANCES: .XX ±0.01 .XXX ±0.005 ANGULAR ±1°		CIT	03/02	
MATERIAL 6061-T6-AL		CHECKED		SYSTEM ADVANCED LIGO
FINISH				SUB-SYSTEM SUS. MODE CLEANER
		COMMENTS:		NEXT ASSY UPPER MASS
				PART NAME FIT FOR MAGNET HOLDER
		SIZE A	DWG. NO. D020211	REV. A
		SCALE: NTS		SHEET 1 OF 1