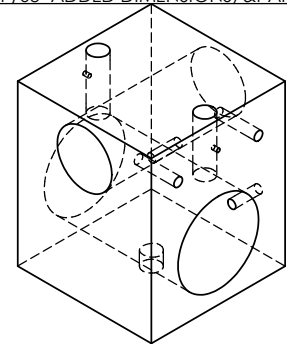
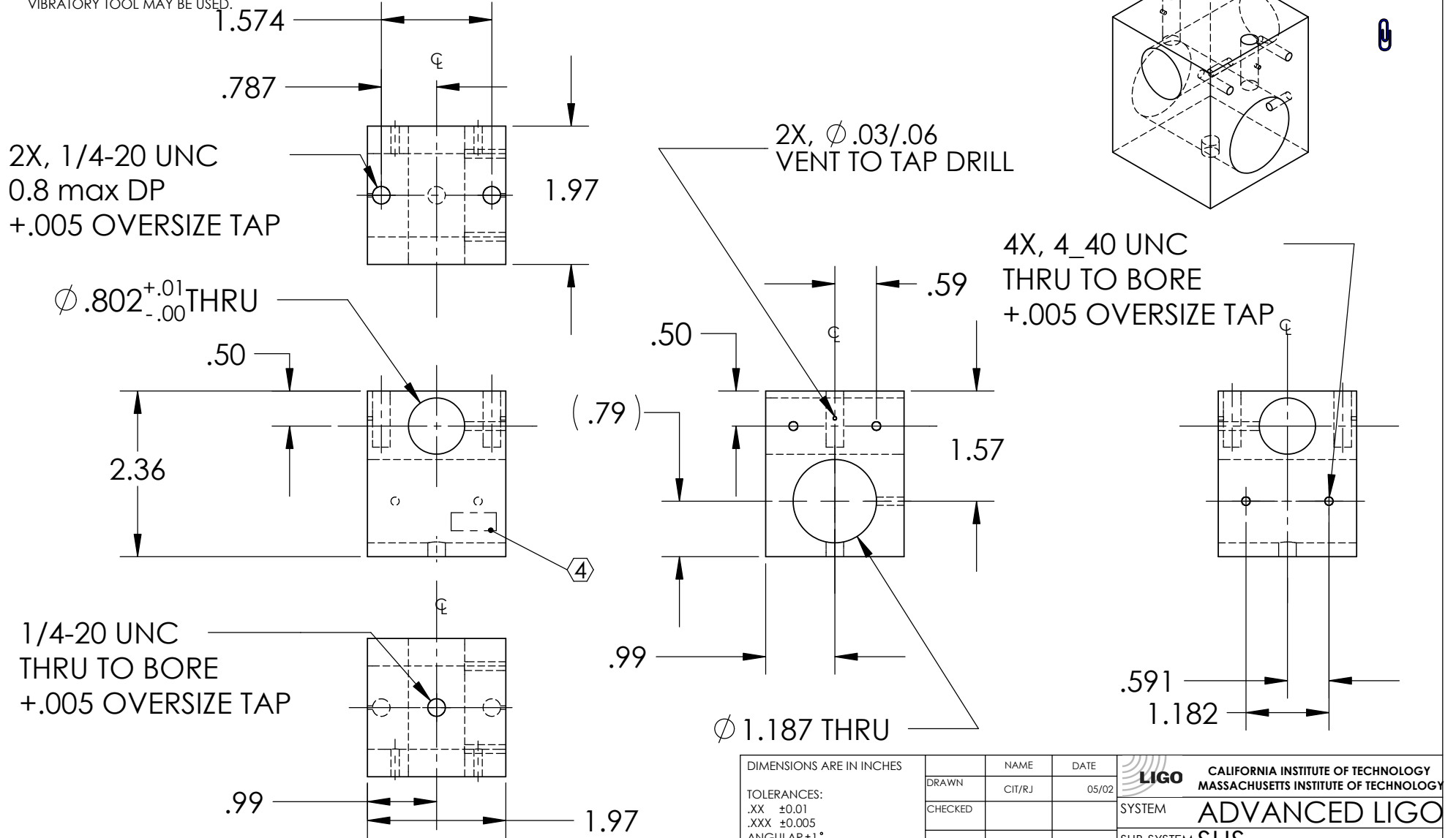


NOTES: (UNLESS OTHERWISE SPECIFIED)

1. DIMENSIONS IN INCHES
2. REMOVE ALL SHARP EDGES, R.02 MIN
3. ALL MACHINING FLUIDS SHALL BE WATER SOLUBLE AND FREE OF SULFUR, CHLORINE AND SILICONE, SUCH AS CINCINNATI MILACRON'S CIMTECH 410 (STAINLESS STEEL)

④ SCRIBE, ENGRAVE OR STAMP DRAWING PART NUMBER ON NOTED SURFACE OF PART AND THEN A THREE DIGIT SERIAL NUMBER. SERIAL NUMBERS START AT 001 FOR THE FIRST PART AND PROCEED CONSECUTIVELY. USE .07" HIGH CHARACTERS. EXAMPLE: D020188-001. A VIBRATORY TOOL MAY BE USED.

REV.	DATE	DESCRIPTION
02	07/25/02	INCREASED MASS, see part
03	08/27/02	REDUCED MASS, see part
04	11/22/02	ADDED PERPENDICULAR HOLE, see part
05	02/17/03	VENT HOLES ADDED
06	25/SEP/03	ADDED DIMENSIONS, & PARTS Re-WORKED TO 1.97"



DIMENSIONS ARE IN INCHES		NAME	DATE	<b>CALIFORNIA INSTITUTE OF TECHNOLOGY</b> <b>MASSACHUSETTS INSTITUTE OF TECHNOLOGY</b>
TOLERANCES:		CIT/RJ	05/02	
.XX ±0.01				SUB-SYSTEM <b>SUS</b>
.XXX ±0.005				NEXT ASSY <b>MC: UPPER MASS</b>
ANGULAR ±1°				PART NAME <b>T SECTION FOR UPPER MASS</b>
MATERIAL	300 SERIES STAINLESS	COMMENTS:		SIZE <b>A</b> DWG. NO. <b>D020136</b> REV. <b>06</b>
FINISH				SCALE: NTS SHEET 1 OF 1