

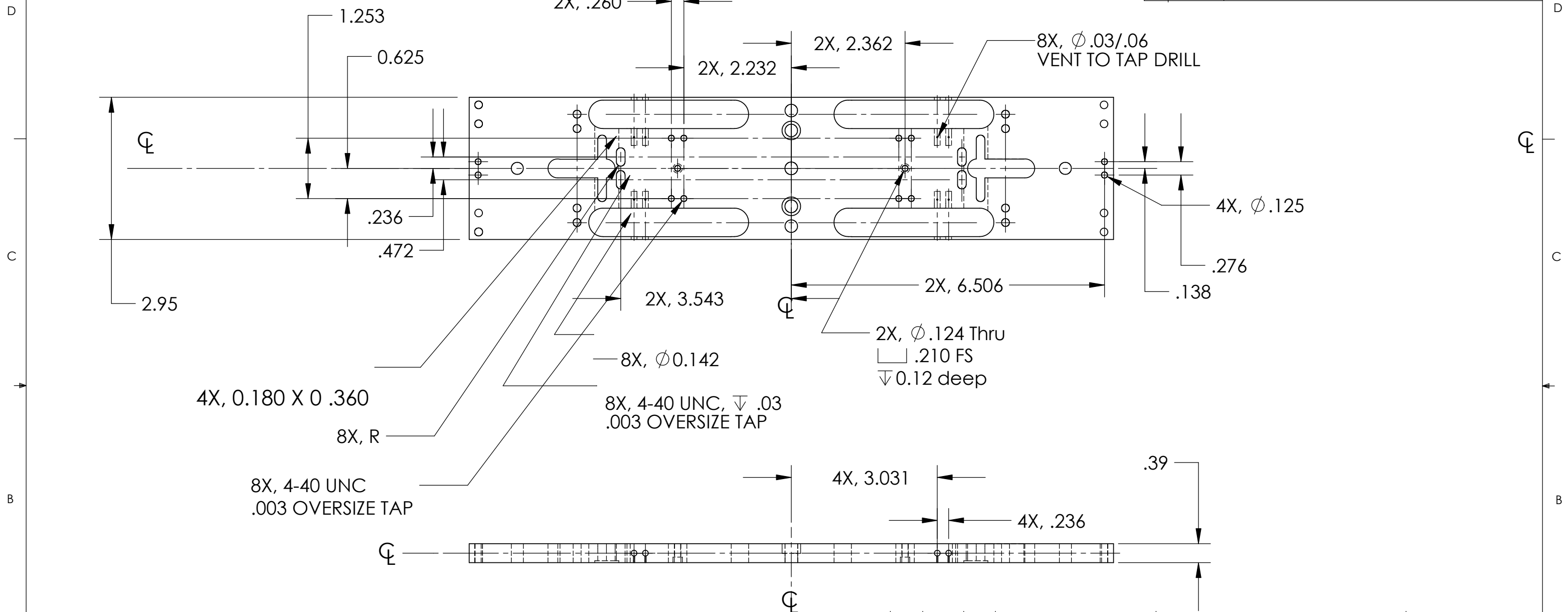
NOTES: (UNLESS OTHERWISE SPECIFIED)

1. DIMENSIONS IN INCHES

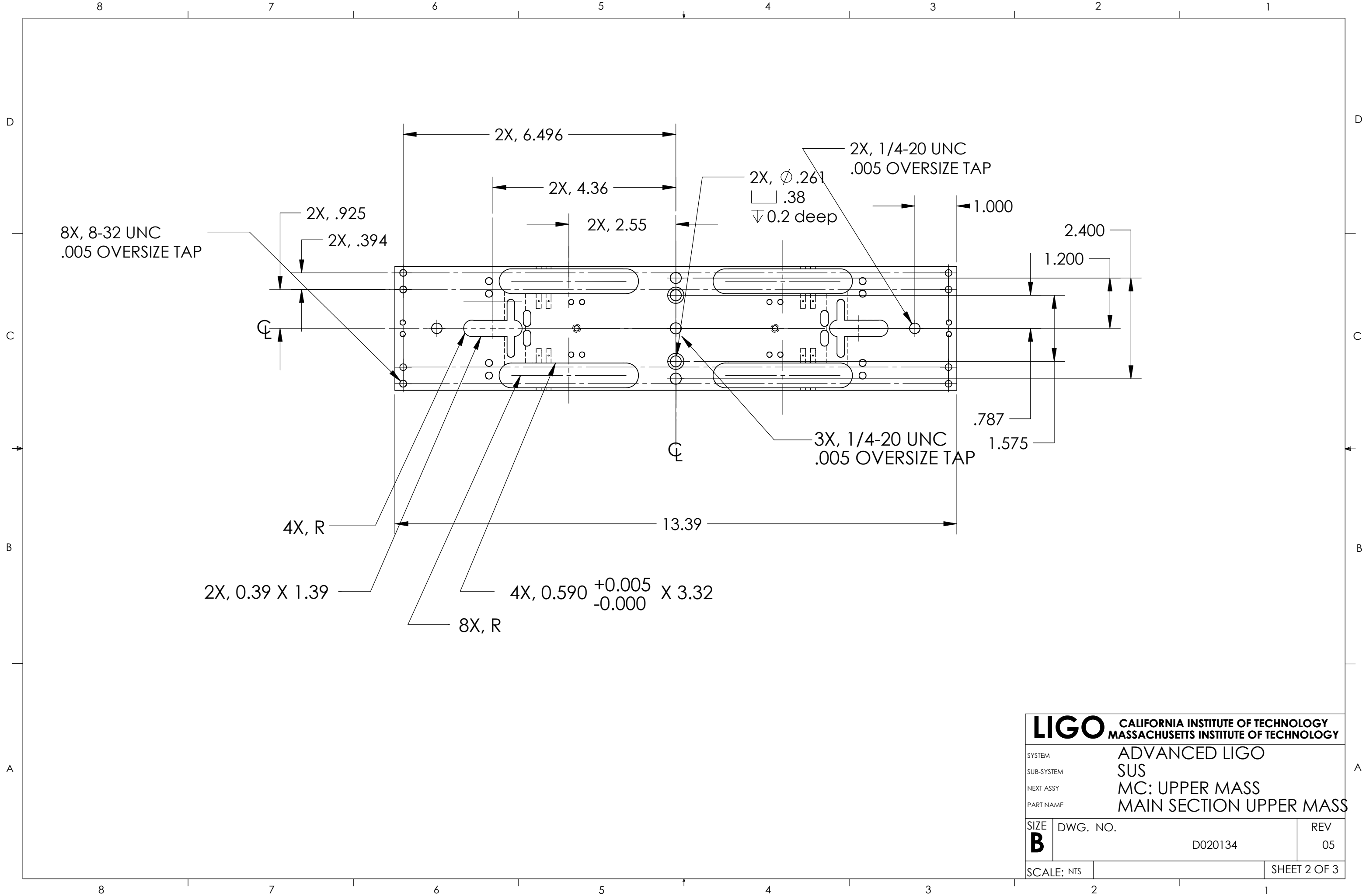
2. REMOVE ALL SHARP EDGES, R.02 MIN

3. ALL MACHINING FLUIDS SHALL BE WATER SOLUBLE AND FREE OF SULFUR, CHLORINE AND SILICONE, SUCH AS CINCINNATI MILACRON'S CIMTECH 410 (STAINLESS STEEL)

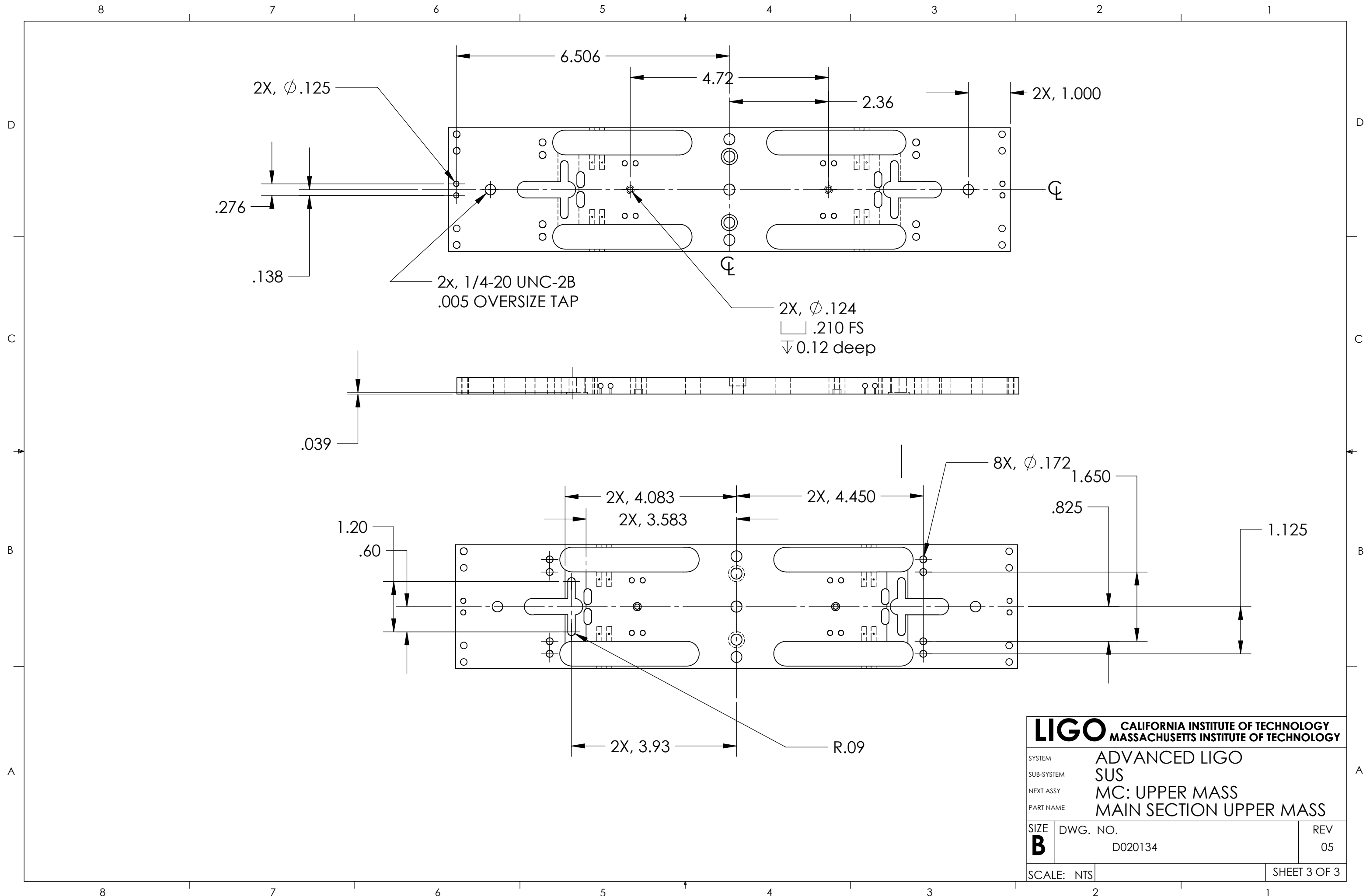
REV.	DATE	COMMENT
01	07/15/02	CHANGE OF HOLES FOR WIRE CLAMP TO SLOTS
02	08/29/02	INCREASED LENGTH OF HIGHLIGHTED SLOT AND MOVED POSITION OF HIGHLIGHTED HOLE
03	09/06/02	2 EXTRA SET OF HOLES FOR ROLL ADJUSTMENT
04	10/15/02	EXTRA HOLES, SLOTS AND WINGS + INCREASED MAIN SLOT AS IN 02
05	02/18/03	VENT HOLES ADDED



ITEM NO.	REQ.	SPARE	TOT.	PART NUMBER	DESCRIPTION	SUPPLIER	
PARTS LIST							
UNLESS OTHERWISE SPECIFIED: DIMENSIONS ARE IN INCHES				DATE	NAME	<b>CALIFORNIA INSTITUTE OF TECHNOLOGY MASSACHUSETTS INSTITUTE OF TECHNOLOGY</b> SYSTEM <b>ADVANCED LIGO</b> SUB-SYSTEM <b>SUS</b> NEXT ASSY <b>MC: UPPER MASS</b> PART NAME <b>MAIN SECTION UPPER MASS</b>	
TOLERANCES: .XX $\pm$ 0.01 .XXX $\pm$ 0.005 ANGULAR: $\pm$ 1°				DRAWN	02/02		CIT
MATERIAL				CHECKED			
FINISH							
300 SERIES STAINLESS				COMMENTS:		SIZE <b>B</b> DWG. NO. <b>D020134</b> REV <b>05</b> SCALE: NTS SHEET 1 OF 3	



<b>LIGO</b> CALIFORNIA INSTITUTE OF TECHNOLOGY MASSACHUSETTS INSTITUTE OF TECHNOLOGY	
SYSTEM	ADVANCED LIGO
SUB-SYSTEM	SUS
NEXT ASSY	MC: UPPER MASS
PART NAME	MAIN SECTION UPPER MASS
SIZE	DWG. NO.
<b>B</b>	D020134
SCALE: NTS	REV
	05
SHEET 2 OF 3	



<b>LIGO</b> CALIFORNIA INSTITUTE OF TECHNOLOGY MASSACHUSETTS INSTITUTE OF TECHNOLOGY		
SYSTEM	ADVANCED LIGO	
SUB-SYSTEM	SUS	
NEXT ASSY	MC: UPPER MASS	
PART NAME	MAIN SECTION UPPER MASS	
SIZE	DWG. NO.	REV
<b>B</b>	D020134	05
SCALE: NTS	SHEET 3 OF 3	