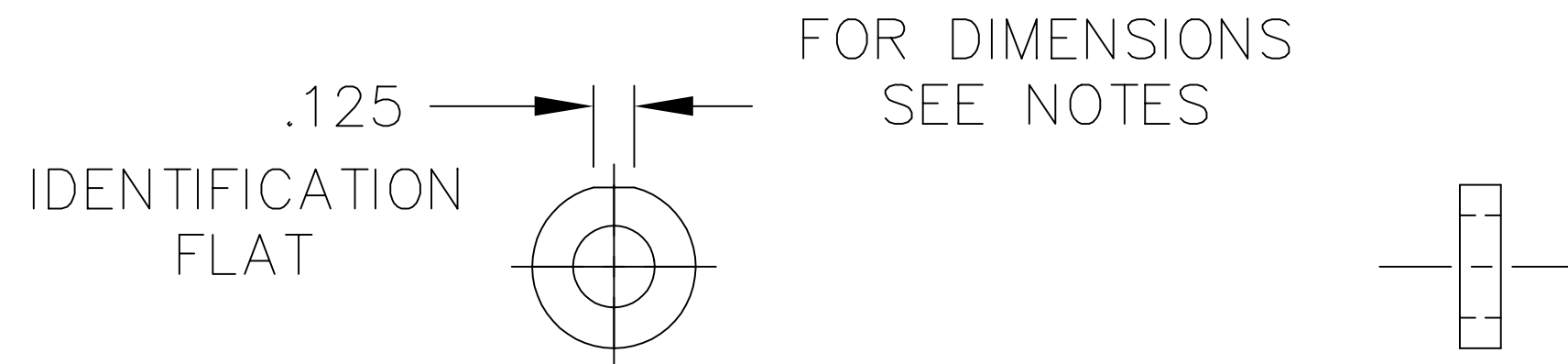


NOTES: (UNLESS OTHERWISE SPECIFIED)

WASHERS IN SETS OF 3
 IDENTICAL IN THICKNESS
 +/- .0008

2 SETS OF 3 REQUIRED PER
 ASSEMBLY



WASHER DESCRIPTION
 MC#90945A761 _Stainless Steel
 NAS620C flat Washer 1/4"
 Screw Size, Dash No. C416,
 .255"ID, .468"OD X .06 Thick.

UNLESS OTHERWISE SPECIFIED DIMENSIONS ARE IN INCHES										LIGO CALIFORNIA INSTITUTE OF TECHNOLOGY MASSACHUSETTS INSTITUTE OF TECHNOLOGY		
TOLERANCES: FRACTIONAL ± 1/16 ANGULAR ± .25° ANGULAR MACH ± BEND ± TWO PLACE DECIMAL ± .01		THREE PLACE DECIMAL ± .005 FINISHED SURFACE RMS 63 BREAK CORNERS IN: .015 OUT: .015 REMOVE ALL BURRS									PRECISION SPACER, WASHER	
MATERIAL: 6061 ALUMINUM	HEAT TREAT: T-6	FINISH:		A	NEW-RELEASE					KENM	3-7-00	
		00	PRE-RELEASE	-	-	-	-	KENM	3-7-00	CAD FILE	D000079-A	
		REV	DESCRIPTION	DCN NUMBER	-	APPR'D	CHECK	DRWN	DATE	SCALE	1 : 1	
USED ON:		NEXT ASS'Y:		ISSUE DESCRIPTION							SIZE	A
											DWG. NO.	D000079-A
											SHEET	1 OF 1