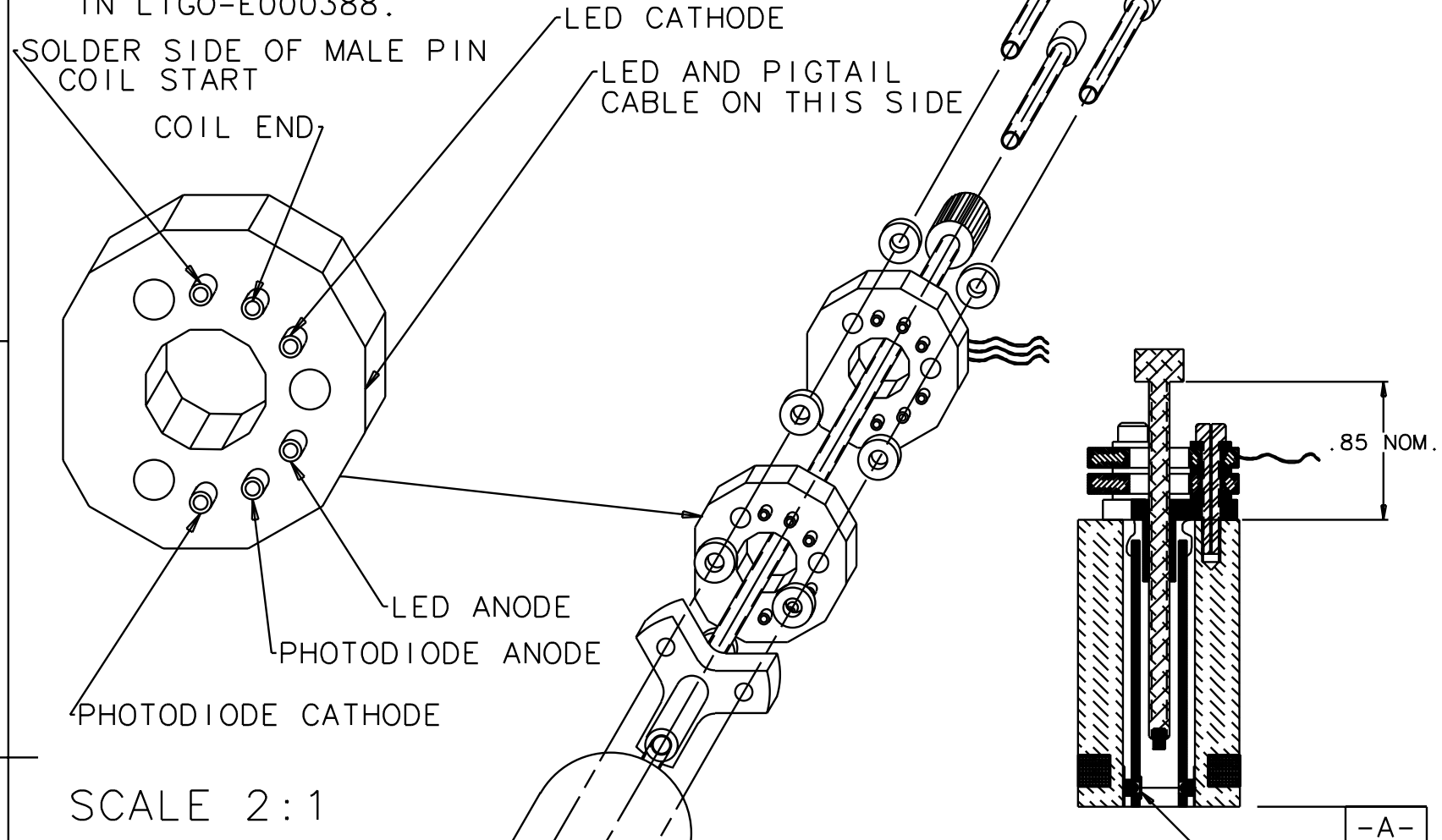


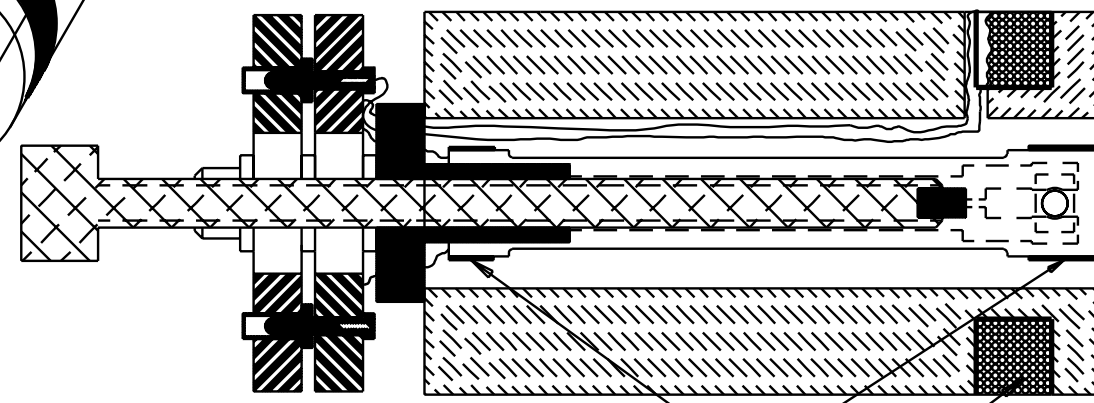
NOTES: (UNLESS OTHERWISE SPECIFIED)  
 1. ASSEMBLY SPECIFICATIONS DETAILED  
 IN LIGO-E000388.

REV	DATE	DRAWN BY	CHECKED	DCC	DCN/DESCRIPTION OF CHANGE

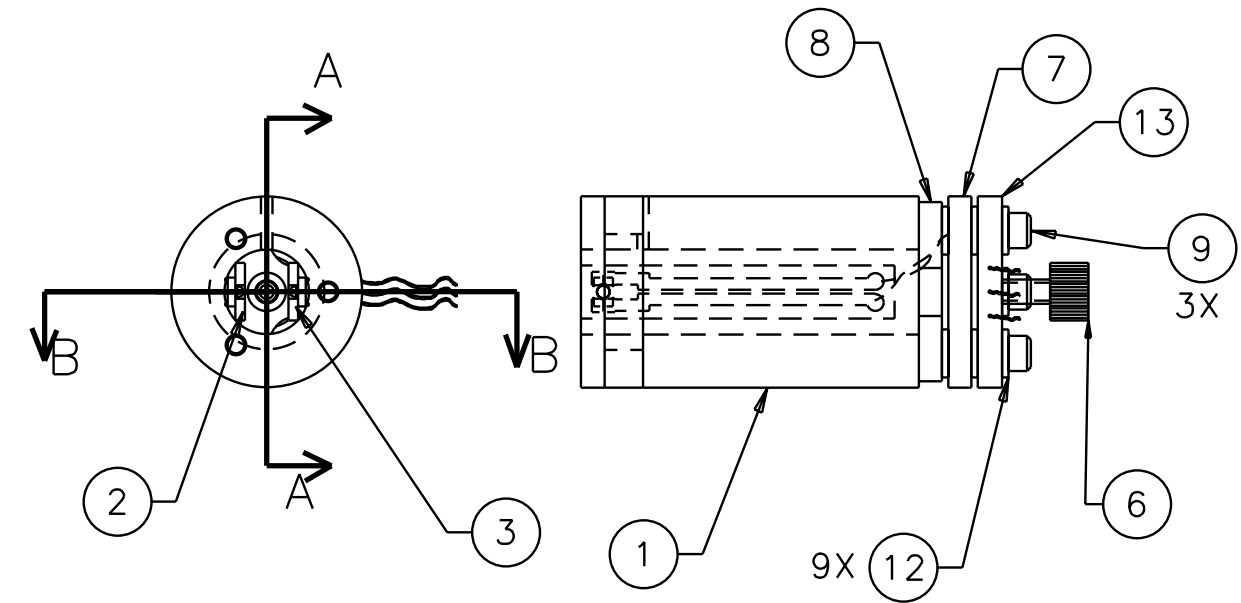


SCALE 2:1

SECTION B-B (11) (5) A/R



TYP. (5) (4)  
 SECTION A-A  
 SCALE 2:1



QTY	RECD	PART OR IDENTIFYING NO	NOMENCLATURE OR DESCRIPTION	MATERIAL SPECIFICATION	ITEM NO
1					16
1					15
ALT		D990676	SENSOR/ACTUATOR PIGTAIL, SHORT		14
1		D990675	SENSOR/ACTUATOR PIGTAIL, LONG		13
9		P/N 95630A234	#4 FLAT WASHER, MCMaster CARR	TEFLON	12
1		D000196	PHOTODIODE OPTICAL FILTER		11
					10
3		P/N C-410	#4-40 X 5/8 SHCS, UC COMPONENTS	VENTED SST	9
1		D990479	PAM BRACKET, ALUMINUM		8
1		D970073	SENSOR/ACTUATOR PIN PLATE		7
1		D000255	PAM SCREW ASSEMBLY		6
A/R			AREMCO CERAMABOND 571		5
A/R		32 HML	KAPTON WIRE, MWS INDUSTRIES	COPPER, 32 AWG	4
1		D000243	CIRCUIT BD ASSY, LED		3
1		D000244	CIRCUIT BD ASSY, PHOTODIODE		2
1		D000064	SENSOR/ACTUATOR HEAD, LONG, SMD, MACOR		1

UNLESS OTHERWISE SPECIFIED DIMENSIONS ARE IN IN (mm) TOLERANCES ARE: FRACTIONS DECIMALS		APPROVALS		DATE	CALIFORNIA INSTITUTE OF TECHNOLOGY MASSACHUSETTS INSTITUTE OF TECHNOLOGY	
N/A		DRAWN J. Hozel Romie	GROUP	5/00	LIGO	
DO NOT SCALE DRAWING		CHECKED			TITLE SENSOR/ACTUATOR ASSEMBLY, LONG, SMD	
MATERIAL	N/A				SIZE B	DWG NO. D000069
FINISH	N/A					REV 03
SCALE	NONE	FILENAME	/home/dcc/docs/D000069.pdf		SHEET	1 OF 1