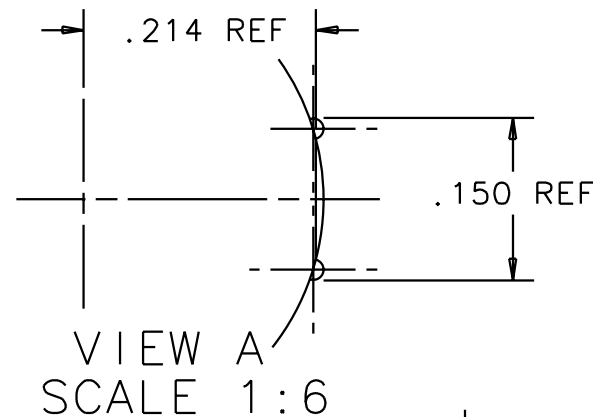
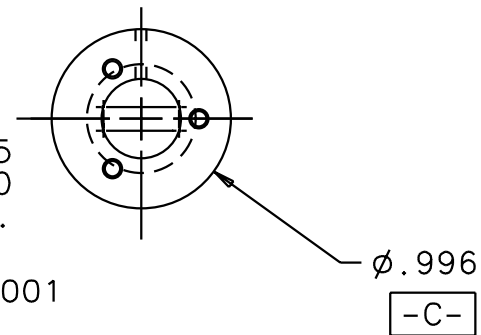
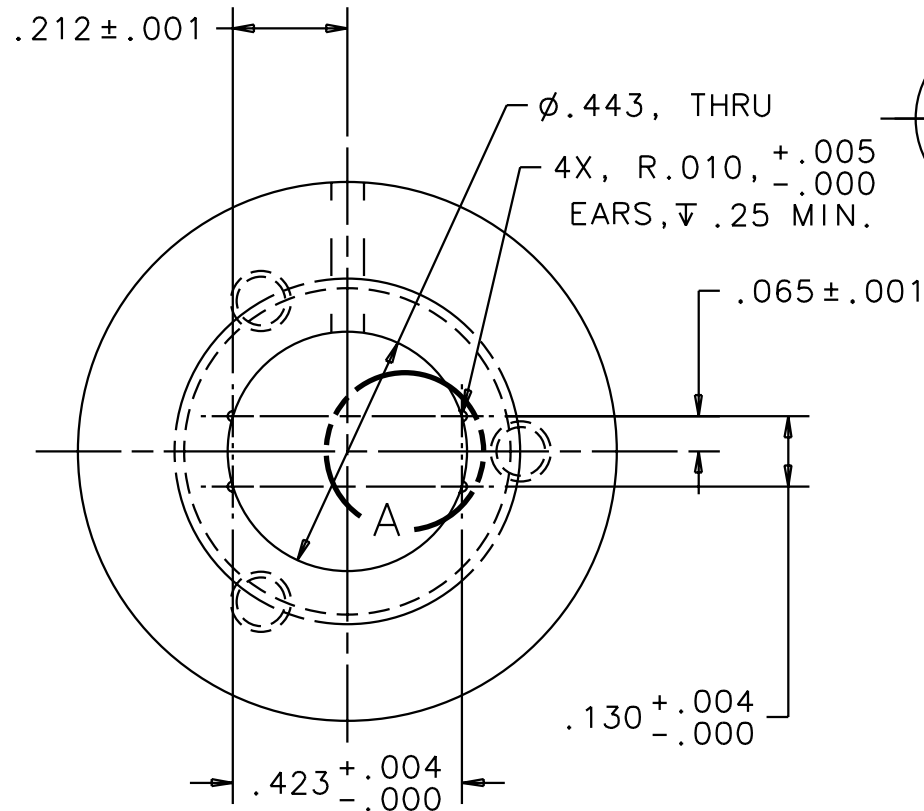
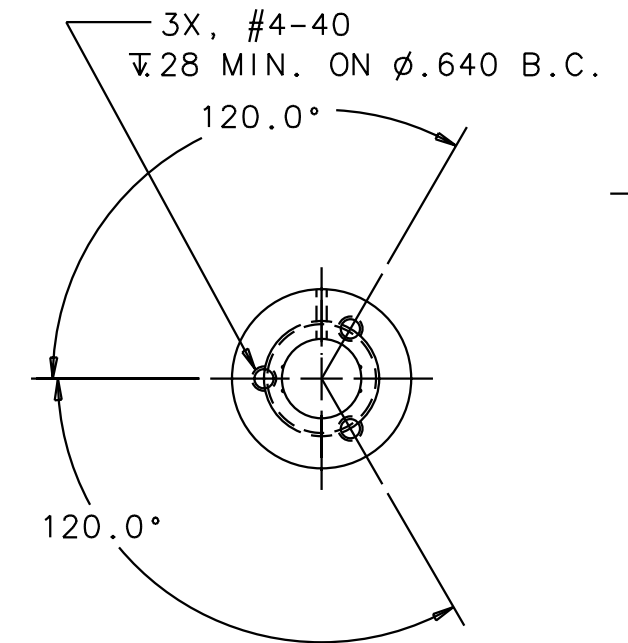
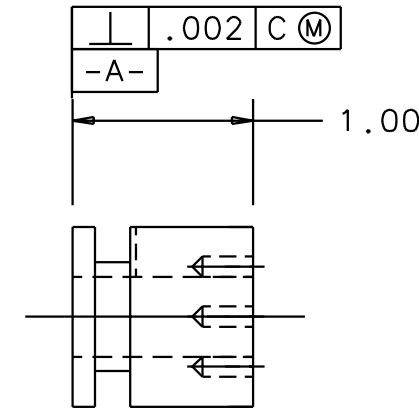
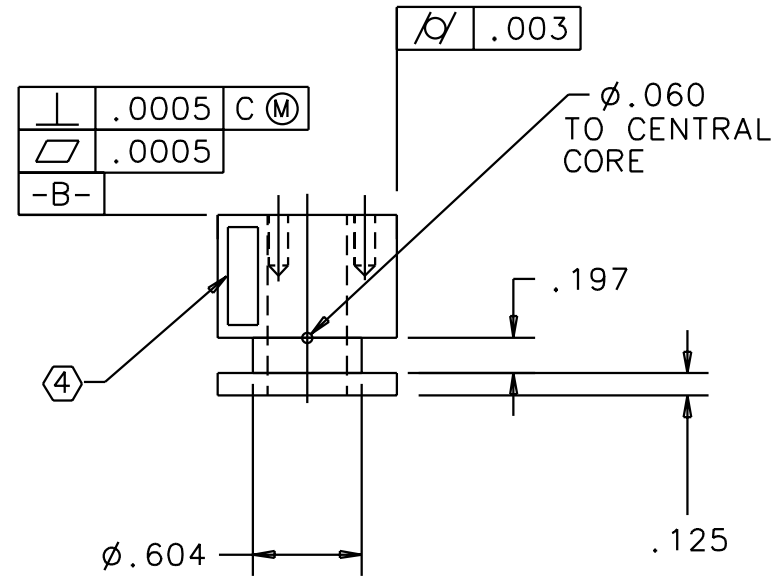


NOTES: (UNLESS OTHERWISE SPECIFIED)

1. BREAK ALL SHARP EDGES
.02/.01 X 45°
2. MATERIAL: MACOR
3. COAT ENTIRE HEAD
WITH A THIN LAYER OF
CONDUCTIVE MATERIAL TO
PROVIDE UNIFORM RESISTIVITY
OF .25 TO 25 OHMS/SQUARE.
- ④ LASER MARK THE DRAWING PART
NUMBER ON NOTED SURFACE OF
PART FOLLOWED BY "S/N"
THEN A THREE DIGIT SERIAL
NUMBER. SERIAL NUMBERS TO
START AT 001 FOR FIRST PART
AND PROCEED IN A CONSECUTIVE
MANNER TO A MAXIMUM OF 999,
FOR EACH SUCCEEDING PART
PRODUCED. USE 0.13 HIGH
CHARACTERS.
EXAMPLE: D000066-A S/N001

REV	DATE	DRAWN BY	CHECKED	DCC	DCN/DESCRIPTION
A	5/9/00	J. Romie			E000240/INITIAL RELEASE
B	5/26/00	J. Romie			E000264/ADD TOLERANCES
C	6/8/00	J. Romie			E000315/ADD .197 DIM.
D	6/19/00	J. Romie			E000326/REMOVE NOTES 1,4



QTY REQD	PART OR IDENTIFYING NO	NOMENCLATURE OR DESCRIPTION	MATERIAL SPECIFICATION	ITEM NO
PARTS LIST				
UNLESS OTHERWISE SPECIFIED DIMENSIONS ARE IN INCHES TOLERANCES ARE: DECIMALS ANGLES		APPROVALS	DATE	LIGO CALIFORNIA INSTITUTE OF TECHNOLOGY MASSACHUSETTS INSTITUTE OF TECHNOLOGY TITLE SENSOR/ACTUATOR HEAD, SHORT, SMD, MACOR
0.XX ± 0.01 0.XXX ± 0.005 ANGLES ± 0.5°		DRAWN J. ROMIE CHECKED	2/00	
MATERIAL	MACOR			SIZE B
FINISH	16 MIN.			DWG NO. D000066
SCALE		FILENAME /home/dcc/docs/D000066.pdf		REV D
				SHEET 1 OF 1