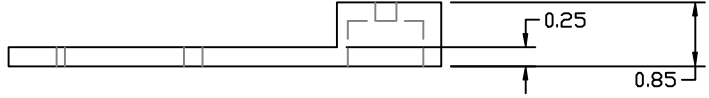
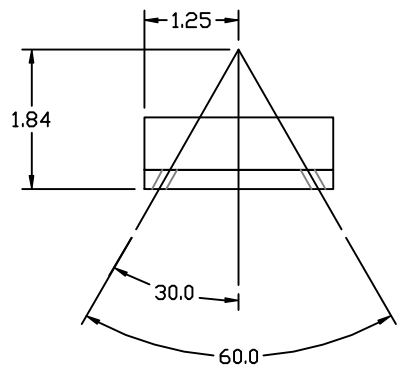
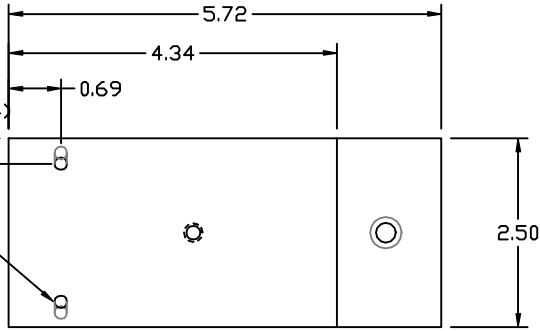


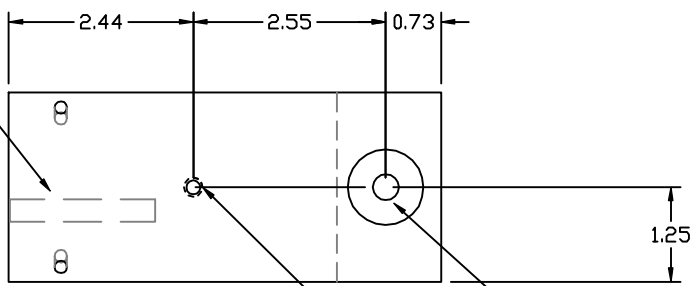
NOTES:

1. MARK PART NUMBER, "D000004-A", IN .12 HIGH CHARACTERS ON PART.
2. CLEAR ANODIZE PER MIL-A-8625.
3. MARK PART NUMBER D000004-A

DRILL THRU AND TAP 8-32 UNF-2B



NOTE 3



DRILL THRU  $\phi 0.344$ ,  
C'BORE  $\phi 0.875$ min, .597 MAX DP

DRILL AND TAP THRU 1/4-20 UNC 2B

REF		QTY	PART or DRWG No.		CDS										MATERIAL				
A		00	PRE-RELEASE		SMITH 1/00										SMITH 1/00				
REV		DESCRIPTION		DCC	SYS	DET	CDS	VE	CC	BT	CHECK	DRWN	DATE	SCALE FULL					
UNLESS OTHERWISE SPECIFIED		DIMENSIONS ARE IN FEET (cm)																	
TOLERANCES:		FRACTIONAL $\pm 1/16(16)$																	
ANGULAR $\pm 1^\circ$		FINISHED SURFACE RMS 63																	
THREE PLACE DECIMAL $\pm .001(025)$		BREAK CORNERS .02																	
THREE PLACE DECIMAL $\pm .005(013)$		REMOVE ALL BURRS																	
MATERIAL:		HEAT TREAT:		FINISH:												CLEAR ANOD.			
6061-T6 ALUM.		-		-												-			
USED ON ETM-X MONITOR		NEXT ASS'Y: D990414-A		ISSUE DESCRIPTION															
DVG. NO.		DESCRIPTION		CALIFORNIA INSTITUTE OF TECHNOLOGY														D000004-A	
REFERENCE DRAWINGS				MASSACHUSETTS INSTITUTE OF TECHNOLOGY														D000004-A-D	
				SUPPORT MOUNT, ETM CAMERA														SHEET 1 of 1	